

# The Messenger

The Magazine of the  
villages of Great &  
Little Bromley

May 2021



# THE FIRST PAGE

Dear all,

The sun has brought out all the tulips today and they have added vibrant splashes of colour where the daffodils are fading. Having finished the rebuilding of the shed and re-siting of the compostarium, Mr R is currently watching our many wisteria plants as they are his favourite. He scrutinises them on a daily basis, mostly with his hands on hips; it does make me chuckle! Our cats are spawled out enjoying the warmth and the sound of birds, the children are at school and college, and we're on a day off - we've even been shopping, and not for food!

Following the sad news of the death of HRH The Prince Philip, Duke of Edinburgh, Great Bromley Parish Council was instructed to postpone its normal meeting and so you'll notice that the usual planning applications and determinations are missing from this edition. I'll include them in next month's edition.

We are hoping that meetings will be able to take place in person in May but, as always, we are waiting for final guidance.

Thank you to all of our contributors for continuing with their wonderful articles. I hope you enjoying reading them as

much as I do. I particularly liked hearing about the Easter tree at Seven Rivers. Although an idea from across the pond, I thought it sounded great, and I'm going to try to remember for next year. You may have seen that the children at St George's school have also been busy decorating the trees in the churchyard and they look so pretty, and create a real community feeling.

You'll see I have included a couple of pages this month that highlight some bogus scams that are currently being reported. I know they don't make for pleasant reading but if they save one person from being made a victim then I think it's worth it. I had a telephone scam call yesterday from the 'National Crime Agency' threatening to revoke my National Insurance number, and to press 1 to avoid being arrested!! I would hate for someone to be frightened by that though, and so publicising scams as much as possible can only help.

May brings us two bank holidays (3rd and 31st) and a Polling day on the 6th, with VE Day on the 8th. It's also National Doughnut week from 9th May, in aid of The Children's Trust.

*Take care,  
Lizzie*

**MATERIAL** for the **JUNE 2021** edition of 'The Messenger' should reach the Editor, Lizzie Ridout, by **14th MAY 2021** please.

Contributions from anonymous sources will not be printed. Whilst the editor welcomes contributions, photographs etc. this is on the understanding that there is no obligation to publish, that the item may be edited and that there is no breach of copyright. Publication is in good faith and neither the editor nor the publisher accept any liability in respect of the content of any article, photo or advertisement, including any error or omission, responsibility for which remains with the author.

Copy can be delivered by hand, sent by post or e-mail (see inside back cover) or via the link on the websites [www.greatbromley.org.uk](http://www.greatbromley.org.uk) or [www.littlebromley.org.uk](http://www.littlebromley.org.uk)

For details of availability and costs for **ADVERTISING** in the 'The Messenger' please contact the Treasurer on 01206 230537

**Please support the sponsors of our magazine.**

# **HRH THE PRINCE PHILIP, DUKE OF EDINBURGH**

**It was with profound sadness that we learned of the death of His Royal Highness The Prince Philip, Duke of Edinburgh on 9 April 2021, and our thoughts are with HM The Queen at this time of immense personal loss.**

**Prince Philip's duty to HM The Queen, his family, and the countless organisations and charities he supported is surely an inspiration to us all.**



Perhaps one of the greatest legacies Prince Philip has left is the Duke of Edinburgh Award Scheme, which works with organisations to help young people gain essential skills, experience, confidence and resilience to successfully navigate adult life.

Over 130 countries and territories now offering DofE programmes as part of The Duke of Edinburgh's International Award Foundation. In the UK in 2019/20, 295,490 young people started a DofE programme and a record 159,051 Awards were achieved through schools, colleges, universities, youth clubs, businesses, housing associations, young offender institutions, voluntary organisations and more.

Find out more at [www.dofe.org](http://www.dofe.org)



# GT BENTLEY DOCTORS' SURGERY

## May Opening Hours

Due to the two Bank Holidays in May we will be closed on Monday, 3 May and Monday, 31 May 2021. Patients can request urgent medical care as normal by phoning 111 when we are closed.

## Covid Vaccination Programme

We have now invited everyone over the age of 50 for their first Covid vaccination. If you have not booked your appointment yet then please contact us on 01206 250691 and speak to one of the reception team who will be able to organise this for you.

For those patients who had their first vaccination at the Surgery we can assure you that we will contact you to book your appointment for your second vaccine within 12 weeks of the first one.

The next Group to be invited will be Group 10 for anyone aged 40-49, followed by Group 11 for those between 30 and 39 and finally Group 12 for those patients between 18 and 29. We are inviting patients in strict group order as per the Government guidelines.

## Opening Up

Now that lockdown is easing and things are starting to open up we want to make sure that we keep both our patients and staff as safe as possible. In order to do this if you are coming in for an appointment please remember to always use the hand sanitiser provided at the door and ensure you wear a face covering. If you are queuing up for reception then please make sure you keep your distance from any other patients in the queue.

With that in mind we would also ask that as we only have limited space in our waiting room that patients do not come in more than a couple of minutes before their appointments to help keep the waiting area as clear as possible.

We appreciate all your help with the above.

## Patient Participation Group Meetings

At the time of writing the Newsletter there isn't a Patient Participation Group meeting planned in May 20201.

***Sue Mitson***  
***Operations Manager***



# ST. GEORGE'S (C OF E) SCHOOL, GT. BROMLEY

Telephone: 01206 230305

All the children have now returned to school for the Summer term. After a year of disruption and change, it is wonderful to have everyone back and we hope to be able to return to some kind of normality over the coming weeks and months.

At the end of last term, every child in the school wrote an Easter prayer to hang on the trees in Church Meadow. I hope you may have had the opportunity to read some of them. Easter is such a special time in school and we were so pleased to be able to get together for an outdoor Easter celebration. It was the first time the whole school had gathered for over

a year! We choreographed the service very carefully to ensure social distancing between 'bubbles' and between children when singing. The children told the Easter story, complete with songs and prayers, and we thoroughly enjoyed being together.

The summer term is always a busy one, with Sports Days, Summer Fairs and school trips. We hope to be able to go ahead with some of these events this year as they are such an important part of the life of our school community.

***Mrs Keitch  
Headteacher***



## GREAT BROMLEY WOMEN'S INSTITUTE

In Lockdown with the absence of normal WI meetings, Gt Bromley WI Committee gave all their members an Easter Surprise in the form of a "Meeting in a Bag". A small sub-committee provided 34 home-made bags packed with little treats, an Easter recipe, a knitting pattern, a springtime poem, a DIY kit to make paper tulips plus goodies to eat and drink and plants to put on the kitchen shelf.

This is Michelle Rhodes holding her bag which was delivered to her at her new home in Wilby, Suffolk, by Jenny Nicholls, our President.

***Merriel Gallifant***



"I Do Like To Be Beside The Seaside"  
David Whittle.

For our second monthly meeting on Zoom we were delighted to welcome David Whittle from the Harwich Society.

David was born and bred in Harwich and has been a long time member of the Harwich Society and is their Archivist. David has a whole programme of talks about Harwich and Dovercourt; we chose "I do like to be beside the seaside" This talk took in many aspects of the development of our coast line here in Tendring and Essex through many decades as a holiday destination as communication and transport developed from before the Victorian era.

A fascinating collection of photographs showed us the wealth of marvellous Piers which used to and still do exist, built to accommodate the regular

service provided by the Paddle Steamers which bought folk from London and beyond to our seaside towns.

Charabanc, buses and increased train links also brought masses of day trippers to our shores, all dressed in their Sunday best.

Other photos depicted scenes of change, especially during the two World Wars when Harwich featured very highly in the defence of the nation. Pictures of the Redoubt Fort and the later Gun in Emplacements at Harwich for the Second World War.

Pictures of the Kinder Transport when Harwich and the holiday camp welcomed the young Jewish children fleeing from the purge of the Nazis.



On a lighter note it was great to see some hilarious and familiar photographs from the television hit show, "Hi De Hi" which was filmed at Dovercourt Warners Holiday Camp.

In 50 minutes we saw and heard so much, it was riveting stuff!

David has invited us to Harwich and

Dovercourt for a guided tour which I believe we should accept. There is such a wealth of History, information and interesting buildings in the towns - of Dovercourt and Harwich a hidden gem.

*Jenny Nicholls*



## NO MOW MAY – Get Bromley Buzzing!

Join legions of gardeners and say “no” to the mow this May to help our bees, butterflies, wildlife and us! Plantlife’s #NoMowMay campaign doesn’t ask you to do much. In fact, it asks you to not do anything at all....Just lock up your lawnmower on May 1st and let the wild flowers in your lawn bloom, providing a feast of nectar for our hungry pollinators.



Let it groooow...

<https://www.plantlife.org.uk/uk/discover-wild-plants-nature/nomowmay>

At the end of the month, on the Bank Holiday Weekend, join in with our nationwide “Every Flower Counts” survey to discover how many bees the UK’s lawns can feed. It’s fun and easy to do. You just mark off a random square metre of your lawn/rough grass (chosen by chucking a ball over your shoulder) and count how many of each flower you find. Find details at:

<https://www.plantlife.org.uk/everflowercounts>



Not only will you receive your very own “nectar score” (which will tell you how many bees your lawn can feed), you’ll help us learn more about the health of the nation’s wild flowers.

And if you’re really keen and want to rewild all summer, try #LetItBloomJune and #KneeHighJuly



## THE BROMLEY AND BLACKSHIELD FAMILIES

A few years ago when I met Celeste and Aston Everett, I happened to comment on the nice old photo hanging in their house, which turned out to have a local connection.



Celeste's grandfather was Thomas William Blackshield of Little Bentley, who was born in 1901 and is one of the boys in the picture. His father, and Celeste's great-grandfather, was William Dale Blackshield, born 1867 in Little Bentley. William married Mary Ann Louisa Bromly, born about 1863 in Great Bromley, who was the daughter of Carrington Bromly (1821-1904), who in turn was son of Phillips Bromly (born 1782 in Ardleigh, died 1868).

The Bromlys farmed in Great Bromley and Little Bentley. Phillips Bromly was an Agricultural labourer living in Hare Green in the 1841 Census. It appears Carrington farmed at Park Farm and he was reasonably well known on various councils and committees, and was the Parish Surveyor for Great Bromley in the Parish Officers list of April 1875 and 1879.

Their surname was later widely spelt as Bromley, perhaps after they had lived here a few years? To add to the confusion in the 1873 Land Register, Carrington Bromley is filed under surname Carrington. As well as Carrington's Farm down Carrington's Road there is a Carrington's Farm on the Bromley Road in Ardleigh (just past Green Island) but I don't know if either are connected to Carrington Bromley. There is a James Carrington in the 1841 census, but again he was at Park Farm. One day I will work out who farmed where!

## Can you help Celeste?

Aston Everett was a fireman, serving at Clacton and Dovercourt fire stations. He had completed 16 years of service and was close to retirement and collecting his Fire Service pension. However, whilst on duty in early January he suffered a brain aneurysm and collapsed, not to recover. Celeste told me, "It was a great shock and terribly sad as he was so looking forward to retiring on his birthday, Tuesday 13<sup>th</sup> April. He had so many plans for his long-earned rest, to spend more time with me and our three girls, Lavinia, Clover and Tawney who he absolutely adored."

His friend and Watch Manager at Clacton, Ben Turner, has set up a Just Giving page where people can donate to financially support Celeste. [www.justgiving.com/crowdfunding/supportingastoneverettsfamily](http://www.justgiving.com/crowdfunding/supportingastoneverettsfamily)



It would be great if you can give a little - or a lot! - to boost the fund towards the target. If you are not online I can do this with you - please contact me.

Many thanks,

**Hugh Frostick**

07722 253962

[hugh@greatbromley.org.uk](mailto:hugh@greatbromley.org.uk)

9th April 2021

## ROYAL MAIL SCAMS — UNDELIVERED PARCEL TEXT MESSAGE

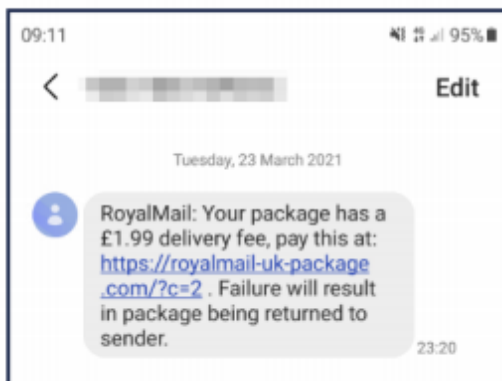
The public are being warned to stay alert to a new wave of scam text messages claiming to be from Royal Mail.



Criminals are taking advantage of the new reliance on online shopping and deliveries to obtain personal and banking details. This follows on from a similar scam where people would receive an email telling them that their parcel could not be delivered and they would have to pay a fee for it to be released.

The text messages come from a variety of different numbers but all will ask for a small payment which is accessed by clicking on a link in the message.

Royal Mail have stated that this is not a text that they would send out, they will only send text messages to those who have opted in to their SMS service.



### Remember:

- Unexpected messages should be treated with caution
- Phone numbers can be easily spoofed by criminals—don't trust a number just because it **appears** to come from a genuine organisation
- Never click on links sent via email or SMS text message.



If you or someone you know is vulnerable and has been a victim of fraud, please call Essex Police on 101  
Report fraud or attempted fraud by contacting Action Fraud at [actionfraud.police.uk](http://actionfraud.police.uk) or call 0300 123 2040

Keep up to date with fraud and  
do **even more** Online at [essex.police.uk](http://essex.police.uk)



## *Dates for your diary...2021*

### **MAY**

- 3 May Day Bank Holiday
- 4 Firefighters' Memorial Day
- 6 Polling day for Essex County Council and PFCC elections
- 7 NSPCC Numbers Day 2021
- 8 VE Day
- 12 Great Bromley Parish Council - Time TBA
- 16 Antiques and Collectors Fair - 9.30am - 3.30pm
- 20 Little Bromley Parish Council - 7pm
- 31 Spring Bank Holiday

### **JUNE**

- 4 National Fish and Chip Day
- 6-13 Bike Week 2021
- 9 Great Bromley Parish Council - 7.30pm
- 13 Cupcake Day 2021- Alzheimer's Society
- 15-20 Men's Health Awareness Week
- 20 Father's Day
- 24 Reserves Day

## Message from the Chairman of Great Bromley Parish Council

I urge you all to keep up to date with and follow the latest advice issued by the Government in relation to the COVID-19 pandemic. I would also ask that we all be aware of our neighbours, and be on hand to provide support to those who might need it, particularly the elderly and those who are vulnerable.

For anyone who is struggling to find support, please call me on 01206 230688.

*Cllr Fred Nicholls*

## Use the NHS 111 online coronavirus service if:

- you feel you cannot cope with your symptoms at home
- your condition gets worse
- your symptoms do not get better after 7 days

**Only call 111 if you cannot get help online.**



Dates for the mobile library at

Church Meadow are:

**9.45 - 10.15am**

**20th May**

**10th June**

**1st July**

**20th July**



**If anyone is in urgent need of the flood barrier or water snakes, these can be found in outside storage at The Courthouse, Harwich Road, Great Bromley.**



**Did you know?** Great Bromley has two Automated External Defibrillators. You can access these at:

- The Cross Inn, Ardleigh Road, CO7 7TL or
- The Courthouse, Harwich Road, CO7 7JG

**Don't ignore it - Report it at [www.essexhighways.org](http://www.essexhighways.org)**



Essex Highways carry out regular inspections of roads and pavements, but issues may come up between these inspections. These could be potholes or other road surface issues, damaged street lights, street signs, overgrown trees, or issues with public rights of way.

Report maintenance issues online by using the highways reporting tool. If you think there's a risk to public safety please call 0345 603 7631 or if you have hearing problems you can use the text phone service on 0345 758 5592.

## VIRTUAL SCHOOL REUNIONS

Recently two pupils, who were friends at St. George's Primary school in the 1960s, met up and shared a class photo. That triggered off some wider dialogue and, as a result of that interest, there are now three new groups on Facebook for ex-pupils of the two village schools:

<https://www.facebook.com/groups/greatbromleyschoolpupils> for past pupils of St George's School up to 1975.

<https://www.facebook.com/groups/greatbromleypupils1976> for pupils from 1976 onwards.

<https://www.facebook.com/groups/littlebromleyschoolpupils> for Little Bromley School

We welcome any past pupils, and parents who were closely involved, to join us. We already have a great

collection of reminiscences in the Great Bromley group, and I hope to get Little Bromley up and running in the same way.

The groups are all private which means content cannot be seen by anyone who is not a member. (This means we are not telling tales outside school, ha ha!) Obviously not everyone uses Facebook so I am happy to share info to the group on your behalf, if you email anything to me.

We hope that this interest may result in some real reunions, in person, at some time in the future.

**Hugh Frostick**

(St George's 1966-1972)

[hugh@greatbromley.org.uk](mailto:hugh@greatbromley.org.uk)

07722 253962

## WELCOME BACK FROM THE 19TH MAY

**Community Library  
at The Cross**

Wednesdays  
10.00am-12 noon



**The Post Office  
at  
The Cross**

Wednesdays  
10.00am-12 noon



**Love where we live  
Help keep it clean**

**Litter pickers are now available for residents who wish to help keep their local community free from litter. Please contact Fred Nicholls on 01206 230688 or Owen Blowers on 07879 433716 to grab yours**

**GREAT BROMLEY  
ANTIQUES &  
COLLECTORS FAIR**

**Sunday 16<sup>th</sup> May**

**9.30am – 3.30pm**

**Great Bromley Village Hall,  
Great Bromley, CO7 7JA**

**ENTRY - £1. ( Before 9.30am £2 ) No Concessions**

**Hot food and drinks available**

**Email: [nigel@garden-shows.com](mailto:nigel@garden-shows.com) Tel: 07802 282193**

**Covid-19 Restrictions: Face covering must be worn, one-way system.**

**Temperatures will be taken and contact details must be given**

**Table Bookings only in advance**



## IN THE GARDEN WITH ANDY & JUDY

We always find May similar to a race where you have heard the ready, steady and are listening for the shot to start the race. Unlike the race, you are not waiting for an official, but for a favourable weather forecast.

The end of the May/Early June is the time when a lot of frost tender bedding, flowers and vegetable plants are planted outside. Ignoring the weather forecast can result in plants being damaged by frost which becomes both a waste of time and money.

If we are due to plant out anything that is frost tender, we always 'harden it off' for several days in a cold frame, usually with the top open at night as well as day. We wait until a period of overnight temperatures above 5 degrees Centigrade are forecast.

You can plant out with predicted lower temperatures providing you can protect with cloches, fleece or some other means. You may need to cover up at night but remove in the morning depending on what is used.

Chrysanthemum plants are less frost tender and are usually planted out around the 15<sup>th</sup> May which also happens to be the day that the growing tip on many spray varieties are 'stopped' by being pinched out. This causes the plant to grow the laterals on which the blooms will develop.

Dahlias are very frost tender and never get planted out before the end of May Spring Bank holiday weekend and if the forecast is not favourable will be left into June.

Potato foliage is also frost tender and on cold nights needs to be protected above ground level by covering with soil (known as earthing up) or with large flower pots. Do not leave the pots on all

day, unless very cold day time weather is forecast, as this will cause the leaves to elongate and blanch. Towards the end of the month if the weather has been dry, you may need to give some additional water to the potatoes to help swell the new tubers and prevent later splitting if they get a lot of water after a long dry spell. You will get an indication of the amounts likely to be required by the irrigation sprayers on the local farms where potatoes are being grown.

If you did not sow Parsnip seed in April it should be sowed this month as they need a long growing season. Indoor sowing of melons, cucumbers, and other tender fruits and vegetables should be done early in the month.

Those fortunate to have an established Asparagus bed will be harvesting spears this month. The sprouting broccoli and over wintered cabbage will be coming to an end. This will free up soil for this year planting of crops. Please remember the need to rotate crops to avoid a build up of pest and disease.

It is the time to make second sowings of peas and the first sowing of French and Runner beans. French beans are usually ready to harvest 10 weeks after sowing. All can be sown in a greenhouse or on a window board before planting out to get a slightly earlier harvest.

May and June are particularly pleasant months to visit Open gardens including those opened under the National Garden Scheme. Owing to the current pandemic the open dates are being released in batches. It is best this year to look out for local advertising or use the NGS website to check the latest situation. Pre-booking may be required to prevent gardens being overcrowded.



## IN CELEBRATION OF CAMPANOLOGISTS

When you next visit St George's Church here is something else to look for.

There is a display of bell ringers hats dated from 1716 - 1991 high up inside the void at the base of the bell tower. How on earth did the bell ringers put them there?



### COVID-19 vaccine scams

To protect yourself and your family members from fraud and criminals, remember the following points:

- ✦ The vaccine is only available on the NHS and is free to people in priority groups, and **the NHS will contact you when it is your turn.** You will not be asked to pay for the vaccine.

- ✦ The NHS will never ask you to press a button on your keypad or send a text to confirm you want the vaccine, and never ask for payment or for your bank details.

- ✦ The NHS is not making house calls to deliver or discuss the vaccine.

If you receive a call you believe to be fraudulent, hang up. If you believe you have been the victim of fraud or identity theft you should report this directly to Action Fraud on **0300 123 2040**. Where the victim is vulnerable, and particularly if you are worried that someone has or might come to your house, report it to the Police online or by calling 101.

**ActionFraud**  
National Fraud & Cyber Crime Reporting Centre  
**0300 123 2040**

## SEVEN RIVERS CHESHIRE HOME

Things are very slowly getting back to the new normal again. As I write this going to the hair dressers is only a week away, so all the grey will go as if by magic! The sun is getting some warmth in it again and the garden is starting to bud.

We put up our Easter tree again this year, we are aware that this is more of an American thing but it does help to keep everyone in touch with the time of year. When like you are indoors sometimes just looking out of the window you can never be so sure what month it is. We also decorated some eggs to put on the tree, we ate hot cross buns and had an Easter quiz, and on Easter Monday we had a horse racing game. With a few visitors coming in and out under the covid restrictions.

As we look forward to May we hope that soon we will be able to go out in our mini bus once again. We have been continuing with our wheelchair dance

classes once a week. This is always good fun and we were able to buy some pompoms, so one day we might just be the first wheelchair majorettes!

We are also hoping that in the next couple of months Leonard Cheshire will allow our volunteers to come back into the home, that will be a day worth celebrating, but very strange. I know I've said this before but we have all got so used to not seeing anyone walking through the home, it's going to be odd when people are able just to walk in.

But I am moving much faster than its going to happen, so just baby steps to start with, this way we all hope the infection numbers are kept low.

All residents and staff have had the second covid jab. But we continue having monthly tests for the residents, and staff have 1 main test and 2 lateral flow test a week.

Keep safe until next time.

*Liz x*

## STOUR VALLEY U3A

Retired? No longer in full-time employment? Join nearly 400 local U3A members and 40 groups organised locally to keep you fit, both physically and mentally. Groups include walking, table tennis, language, kayak, singing, photography, gardens and travel.

Monthly meetings and lectures are currently via Zoom - April lecture "When Birds Sing" and May lecture "The History of Jazz Piano".

Visit the Stour Valley website [u3asites.org.uk/stourvalley](https://u3asites.org.uk/stourvalley) for full information. New members are always welcome.

## PRIMROSE FARM BARN OWL UPDATE

Henrietta? Or Harriette ??

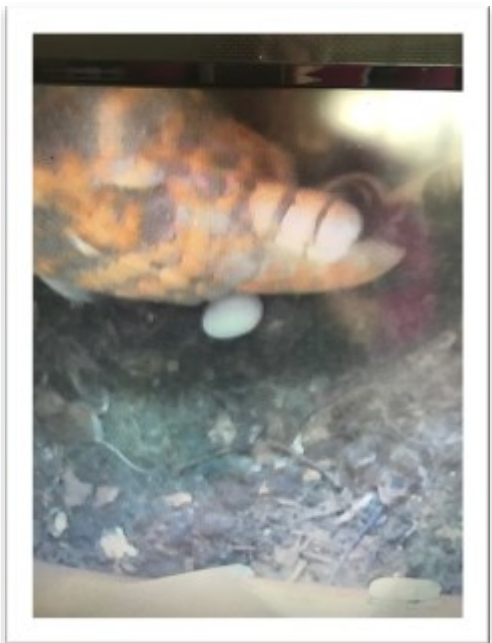
The last diary entry finished with the female Barn Owl Henrietta not returning for two nights following very high winds one night. She was missing for a total of six nights, the male Henry did not really seem particularly bothered he slept and hunted as normal. We spoke to the local owl expert and he said this was unusual but she could return, she may be sheltering elsewhere and he had not had any reports of any injured owls, or as the box was the domain of the male he may entice another female into his home. On the sixth night of her absence, Henry became very agitated. We turned the sound up and he was arching his back and sending out very agitated squawks. He was making a noise by stamping his feet on the bottom of the box. We thought perhaps he was being threatened by a bird of prey? And could hear a bird on the ledge. This all happened over two and a half hours fairly late at night. Eventually, a female barn owl flew into the box and there was a great deal of wings flapping and locking of beaks. It did not seem particularly friendly, especially if this was the original female who had returned. They eventually settled down and she has stayed ever since.

We have tried to decide if this is a new female i.e. a Harriette, we think the tail feathers appear a different shape, before they were very fan-tailed and this female has a shorter fan and the wing feathers point and overlap this fan. Since then, they appear to repeat the courtship the previous pair followed. To start, they hunted separately and then he started bringing her food. She sometimes as six or seven mice and voles as presents in the morning. They

both eat the prey throughout the day. She now does not go far and he hunts for both of them.

So the last month has been quite a story, has the last female been enticed by another male and made up a pair elsewhere or could she not cope with the rocking in the wind of the box that night?!!! We will never know.

Last night, just before finishing this article, we noticed that Harriette was sitting down rather than standing tall on her feet. She seemed quite fixed in a spot and then seemed to stand and stretch and we have spotted one white egg nested underneath her! So exciting, hopefully she will lay another couple at two-day intervals. The incubation period is 30-31 days so she has to stay put now for that length of time. Will keep you all updated.



## **Quintessentially British Events, Classic Festivals and Events**

### **WEALD PARK COUNTRY SHOW**

[www.wealdcountryshow.co.uk](http://www.wealdcountryshow.co.uk)

22nd and 23rd May 10.00 – 5.00

## **THE WEALD COUNTRY SHOW WITH SO MANY EXCITING AND NEW ATTRACTIONS IN 2021**

We are extremely excited and cannot wait for the show this year with so many exciting and new attractions.

We are delighted to announce our new Motorbike display and attraction area at the show on both days with our fantastic motorbike and BMX bike team. Fancy a go with on a BMX with a UK Champion, well the Weald Park Country Show is the show for you.

Our main area will have some fantastic demonstrations this year to include Barrel Racing thanks to the UK Barrel Racing Team, the inspiring Dog and Duck Shows with the amazing Chris Jupp and his beautiful Collie dog and fabulous runner ducks, Falconry with the World of Wings birds of prey displays thanks to the wonderful Ange and Rick and their excellent routines, African Dancers and Living History displays.

Our Festival of Cars area has had amazing array of entries on both days with many different and exciting cars for all those car fans out there.

Our Foodmarkets area will have some wonderful producers, Cookery demonstrations with some amazing Chefs including Italian Chef Claudio Bincoletto and many others.

The Festival of Dogs area at the show is hugely popular with Charity Fun Dog Shows (raising £3,800 for Charities in 2019), Owner and Celebrity Lookalike Competition, Dog Agility, Dogs Have Got Talent, Flyball and so much more.

Circus Aerial Displays 3 times a day to the Greatest Showman as well as Magic Shows with was that one rabbit or seven? We are so excited to also announce our outdoor Theatre performances of The Buccaneers.

Fancy a bit of Abba in our music area, well come along to the show and enjoy the Abba Tribute Band playing daily along with five other bands. We will also be joined again by the wonderful Wrestleforce Team with some wrestling fun, fun, fun.

The Weald Park Festivals of Kids - come along and meet Classisaurus our T-Rex Dinosaur who will be joined by his storm trooper friends who will be at the show this year. Lots for the children to do including Punch and Judy, Gemma's Petting Farm, rides and loads more fun.

Rural Crafters – come along visit and support our avenue of Rural Crafters this year who will be demonstrating their crafts as well as selling them. Visit our Living History Village and try your luck with our Living History Archery and do not forget last but not least the opportunity to do some amazing shopping with our array of stands at the show.

The Weald Park Country Show runs 10am – 5pm on Saturday 22nd May and Sunday 23rd May at Weald Country Park, Brentwood, Essex, CM14 5QS For ticket info. Visit [www.wealdcountryshow.co.uk](http://www.wealdcountryshow.co.uk). The show will follow Covid guidelines and we would like to encourage people to book online in advance.

Be  
Fraud  
Smart!

essex.police.uk/  
beFraudSmart



# Essex Police Fraud Alert System

32

16th April 2021

## SOLAR PANEL SCAMS

Essex has recently seen an increase in residents falling victim to rogue traders mis-selling solar panels.

Criminals target the vulnerable and those who already have solar panels to offer unnecessary maintenance contracts, extended warranties or battery replacements—all at a high price. One 'customer' in Rayleigh received forged paperwork, whereas most receive none. Following the payment, no service is provided.

Residents have been contacted via the phone or by cold callers knocking at the door. Contact out of the blue should always be treated as suspicious—don't be rushed to make a decision there and then.

Remember to Take Five:

- **STOP** - Taking a moment to stop and think before parting with your money or information could keep you safe.
- **CHALLENGE** - Could it be fake? It's ok to reject, refuse or ignore any requests. Only criminals will try to rush or panic you.
- **PROTECT** - Contact your bank immediately if you think you've fallen for a scam and report it to Action Fraud.



If you or someone you know is vulnerable and has been a victim of fraud, please call **Essex Police on 101**  
Report fraud or attempted fraud by contacting **Action Fraud** at [actionfraud.police.uk](https://www.actionfraud.police.uk) or call 0300 123 2040

Keep up to date with fraud and  
do **even more** Online at [essex.police.uk](https://www.essex.police.uk)



## RECTOR'S MESSAGE

There are many people who say that the Church has been rather slow in taking up the environmental cause. There may be some truth in this accusation. In the first pages of the Bible, however, those ancient writers affirm that humankind has been entrusted with the stewardship of this wonderful world. Perhaps late in the day, we are beginning to wake up to our monumental failure to live up to this trust. One of the Church of England's 'Five Marks of Mission' is to 'strive to safeguard the integrity of creation and to sustain and renew the earth'.

The Church's calendar has always, however, set aside certain times in the year, to give thanks for creation and to pray for God's blessing on agriculture. Some of these traditional days have sadly fallen into disuse, as they came to be seen as, at best quaint, or at worst, outdated. But in recent years, as we have become more aware of the dangers facing the natural world, perhaps these traditions can speak to us with a new relevance.

Harvest Festival has survived and is still observed in many schools as well as churches. It is an opportunity to celebrate God's creation, to give thanks for our food and also to do something practical to remember those in our world who do not share in those good things. Until recent years, Lammas Day was also observed, on August 1<sup>st</sup>, to celebrate the 'first fruits' of the Harvest.

In my last parish, in Maldon, in January, we observed Plough Sunday on the Sunday after the Epiphany. The Plough was carried through the High Street and then brought into church to

mark the beginning of the agricultural year. We prayed 'God speed the plough'.

This year at St George's we will again be celebrating Rogation Sunday on May 9<sup>th</sup>. Rogation Sunday (always the Sunday before Ascension Day) and the three days following, are set aside as a special time to pray for those working on the land. It was the tradition to process to local farms and pray for God's blessing on the fields and the livestock. The pandemic prevents us from having a grand procession through the village this year. However, we will gather in the churchyard at approx 11.20am at the end of the morning service to pray for God's blessing on the farms of our parish.

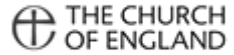
On all of these special days the Church invites us to celebrate God's wonderful creation and to reflect on our dependence on the crops and livestock of our farms. It is also a time to repent of our neglect and pollution of our planet and our treatment of our fellow creatures.

'God eternal, in whom we live and move and have our being; awaken us to your presence that we may live in this world as your children. Grant us reverence for all your creation, that we may treat all people with courtesy and all living things with gentleness, through Jesus Christ our Lord. Amen'

***Stephen Carter***



# St George's Church Great Bromley



www.greatbromley.org.uk

*Parish of The Bromleys*

**Welcome back!** All services are in church with congregation and music

<b>St George's, Great Bromley</b>		
2 <sup>nd</sup> May	Easter 5	10.30 Parish Eucharist (BCP)
9 <sup>th</sup> May	Easter 6	10.30 Parish Eucharist
13 <sup>th</sup> May	Ascension Day	see St Mary's, Lawford
16 <sup>th</sup> May	Sunday after Ascension	6.30pm Evensong (BCP)
23 <sup>rd</sup> May	Pentecost-Whitsunday	10.30 Parish Eucharist
30 <sup>th</sup> May	Trinity Sunday	10.30 Parish Eucharist

<b>St Mary's, Little Bentley</b>		<b>St Mary's, Lawford</b>
3pm Bluebell Service	2 <sup>nd</sup> May	10.30 Holy Communion
	9 <sup>th</sup> May	10.30 Family Service
	13 <sup>th</sup> May	7.30pm Holy Communion
10.30 Holy Communion	16 <sup>th</sup> May	10.30 Holy Communion
	23 <sup>rd</sup> May	10.30 Morning Service
	30 <sup>th</sup> May	10.30 Morning Service

## **Newsletter**

Our colourful e-mail St George's newsletter will keep you informed about everything going on at St George's; it has links to music, art, and poetry (all in colour!).

## **Website and contacts**

For details about all that's going on at St George's please see the website, or email [church@greatbromley.org.uk](mailto:church@greatbromley.org.uk) or phone Jenny 01206 230688.