



Services for July

1st	10.00am	The Eucharist	<i>St. Mary the Virgin</i>
2nd	11.00am	The Eucharist	<i>Seven Rivers</i>
3rd		S Thomas	
	9.00am	The Eucharist & Rosary	<i>St. Mary the Virgin</i>
Sunday 4th		Trinity 4	
	8.00am	The Eucharist	<i>St. George the Martyr</i>
	10.30am	The Parish Eucharist	<i>St. Mary the Virgin</i>
	6.30pm	Evening Prayer	<i>St. George the Martyr</i>
5th	9.30am	The Eucharist	<i>St. Mary the Virgin</i>
7th	6.00pm	The Eucharist	<i>Hamilton Lodge</i>
8th	7.00pm	The Eucharist	<i>St. George the Martyr</i>
9th	11.00am	The Eucharist	<i>Seven Rivers</i>
10th	9.00am	The Eucharist & Rosary	<i>St. Mary the Virgin</i>
Sunday 11th		Trinity 5	
	8.00am	The Eucharist	<i>St. Mary the Virgin</i>
	10.30am	The Parish Eucharist	<i>St. George the Martyr</i>
	6.30pm	Evening Prayer & Sermon	<i>St. Mary the Virgin</i>
12th	9.30am	The Eucharist	<i>St. Mary the Virgin</i>
15th	7.00pm	The Eucharist	<i>St. Mary the Virgin</i>
16th	11.00am	The Eucharist	<i>Seven Rivers</i>
17th	9.00am	The Eucharist & Rosary	<i>St. Mary the Virgin</i>
Sunday 18th		Trinity 6	
	8.00am	The Eucharist	<i>St. George the Martyr</i>
	10.30am	The Parish Eucharist	<i>St. Mary the Virgin</i>
	6.30pm	Evensong	<i>St. George the Martyr</i>
19th	9.30am	The Eucharist	<i>St. Mary the Virgin</i>
	3.00pm	Wedding of Vicky & Tom Pratt	<i>RHS</i>
21st	7.00pm	The Eucharist	<i>St. George the Martyr</i>
22nd		S Mary Magdalene	
	10.00am	The Eucharist	<i>St. Mary the Virgin</i>
23rd	11.00am	The Eucharist	<i>Seven Rivers</i>
24th	9.00am	The Eucharist & Rosary	<i>St. Mary the Virgin</i>
	2.00pm	Wedding of Natalie Weir & Andrew Lee	<i>St. Mary the Virgin</i>
Sunday 25th		Trinity 7	
	8.00am	The Eucharist	<i>St. Mary the Virgin</i>
	10.30am	The Parish Eucharist	<i>St. George the Martyr</i>
	6.30pm	Evening Prayer	<i>St. Mary the Virgin</i>
26th	9.30am	The Eucharist	<i>St. Mary the Virgin</i>
28th	7.00pm	The Eucharist	<i>St. George the Martyr</i>
29th		S Martha	
	10.00am	The Eucharist	<i>St. Mary the Virgin</i>
30th	11.00am	The Eucharist	<i>Seven Rivers</i>
31st		S Ignatius	
	9.00am	The Eucharist & Rosary	<i>St. Mary the Virgin</i>

JUNE JOTTINGS

Goods news for 'out of towners' and those abroad is that Hugh Frostick has been setting up a website for each of the villages. These will be expanded upon as information comes in to him so do read his article and get in touch. Meanwhile The Cross Inn has been given the go-ahead by the Royal Mail to open, probably in August, a Post Office on their premises initially with limited opening hours. How lovely to soon not to have to rush miles for the nearest counter!

George and I have been whizzing about this month and have been doing the BugWatch - a way in which the RSPB are trying to work out if there are enough insects to support our bird population. I downloaded the Splatometer from the website and have been counting the number of bugs 'splatted' on our number plate during June on journeys of 20 miles and over.

Having watched the once in a lifetime dot of Venus traversing the sun during the morning of 8th June we now have a photograph (taken at 10.34 BST) of the event. That same evening almost at dusk an enormous winged insect flew slightly erratically over our heads. Initially it appeared like a huge black moth. I followed it to see if it would land so that I could identify it. After a few minutes of going back and forth it landed on the roof of the greenhouse. It was a beetle, it was big and it was a lady Stag Beetle. East Anglia is one of the few places in Britain where Stags can be found. They spend about three years as a large white larva reducing rotting piles of wood to dust. They are completely harmless though the female can nip if handled. The beetle flies between June and August and during its short adult life of about a month

eats nothing, mates, lays her eggs and dies. The males have large 'antlers' which are purely ornamental and used to intimidate other males during courtship. Do leave a little pile of wood in the corner of your garden for the Stag beetle and other insects. The hedgehog will also benefit who will in turn keep down your population of slugs and snails.



I missed by a day doing my annual road verge count of wildflowers this year. The Council came and cut them while I was lying low in the heat. I know it is in the interests of road safety but they hardly have time to flower let alone set seed. At least they appear to restrict the verge cutting to a single swathe width where possible leaving a number of plants to mature to their full glory.

I am delighted this year to have heard the cuckoo so many times (last year I heard it twice only). His call always gladdens my heart. I just hope he found a lady (they do not call) this year and some eggs were laid. I presume last year no females were nearby and he went elsewhere.

The swallows and house martins have arrived but yet again in low numbers. No nests are being set up on my house so I hope there are some of you in the villages who are lucky enough to have the honour of their presence. I am told the fewer numbers returning each year are because the Sahara is becoming wider making the journey more difficult. Let us hope that they adapt to the environmental change soon, though I will miss them as a sign of summer if they go to nest elsewhere.

Leonie Henderson

SEVEN RIVERS

G R E A T B R O M L E Y





Forthcoming Events


Saturday 3rd July
Charity BBQ
Motorcycle Trial
Starts 2pm



Creating opportunities with disabled people


LEONARD CHESHIRE 

Seven Rivers Leonard Cheshire
Gt Bromley Colchester Essex Tel: 01206 230345



THE UNITED PARISHES OF ARDLEIGH AND THE BROMLEYS

The Rectory, Hall Road, Great Bromley, CO7 7TS



Dear Parishioner,

The good news is that scaffolding has gone in S George's Church and work is due to begin on the roof any day now. This comes after a sustained period of making grant applications and fundraising by a dedicated group of people, and much generosity on behalf of people such as yourselves. Whilst the work is being carried out, access to Church will have to be restricted for Health and Safety reasons, but funerals can take place as normal and all services as advertised.

The bad news is that as far as the building is concerned large amounts of money will still have to be spent on it in the future. Whilst there is nothing that is urgent, the repairs will be ongoing for a while yet.

In S Mary's the redecoration of the nave is now complete and the organ is nearly finished. Not that S Mary's gets off lightly as we await the architect's report with bated breath.

Both Church Councils are looking for the next project to provide refreshment

facilities and loos. At S Mary's we have a financial head start, because of the proceeds from the sale of the Vicar's Room, at S George's we are almost starting from scratch.

So we are at the decision making stage of how best to use the space we've got and how to meet the needs of the congregation, whilst complimenting facilities already available in the villages. If anyone feels they could give time and expertise to be a project manager, I'd be delighted to hear from them, otherwise these projects are simply going to remain on paper.

Like it or not these are the buildings we have to work with and worship God in, so we have to celebrate the beauties and put up with the inconveniences. There are very visible signs of a strong, active, Christian presence here, open for all to seek peace and sanctuary in this busy life of ours.

May God bless us through them as He has blessed past generations, to his glory and the peace of us His children.

Fr Nicolas.

FROM THE PAST ...

THAT RALPH KING AGAIN!!

In the 1607 Visitation by The Archdeacon or his representative to Little Bromley the Church Warden, Robert Baker, was in trouble. Why? His evidence was -

"That he did not provide bread and wine..... that there was no money given to him to provide any after that he was sworn Church-warden.....that he did not receive the holy Com(munio)n sithence Easter (1606) - but he sayth that he offered himself at Christmas last but Mr King refused him, for that he sayth that there wanteth a large byble, ij books of homilyes, he sayth he cannot tell whether they have them or not. They want ta sto(o)pe for the wine; the steeple is in decay; but we want no bell ropes. There is no disorder in the church but that Mr King (asks them)... to sit higher in the church than they do".

No comment is needed is there?

John Appleby

PCC MINUTES

The Parochial Church Council met on May 27th.

If you have visited the church recently you can't have failed to notice the scaffolding! This is in preparation for the repair work to be carried out in the north aisle. It has been made possible by a grant from English Heritage but also by the tireless fundraising work of Anne Clapham and the Repair Committee.

The church is quite often open during the week. However, Health and Safety regulations mean that it is not always possible for people to move around the building and you could be asked to leave if the workmen have any concern for your safety. Services continue as normal.

A meeting for pre-school children and their parents is to be held in St. Mary's

church, Ardleigh from 9-10am on Thursday mornings, starting on June 10th. Everyone, from both Ardleigh and Bromley, with a child or children of this age is welcome.

The meeting also considered the role of women priests in the Parish. It was decided that although the council would not wish for a woman to be in overall charge of the benefice it had no objection, in principle, to a woman minister celebrating the Holy Communion on an occasional basis. However, as Fr. Nicolas was appointed on the understanding that women priests would not be fulfilling this role, no changes will be made to this arrangement in the immediate future.



LITTLE BROMLEY FLOWERS AND MUSIC 12/13 JUNE



Thanks to all who came Both music and flowers were much appreciated - a home grown effort with local musicians and flowers from nearby gardens and hedgerows.

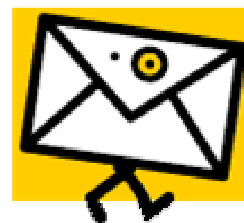
It was good to see so many people from

Little Bromley and beyond. People said how much they enjoyed the chance to relax in such a lovely place and chat to old friends and new acquaintances. The Amenities Committee had a board and leaflets on display to advertise plans for more community events in Little Bromley.

We weren't trying to raise money but the donations of over £350 will help to maintain the churchyard and the Churches Conservation Trust.

A big thank you to all who gave their time and talents to make the weekend a success.

Gregory Frostick



GREAT BROMLEY POST OFFICE AT THE CROSS INN

GOODS NEWS - We've been approved!

With luck, the Post Office will start trading towards the end of August. Initial hours - 10.00am - 2.00pm Monday to Saturday incl. These hours will be extended if demand warrants it. Provisions and goods will be available on a limited basis - once again, demand will create supply. Check next month's magazine for more details.

Richard and Brenda

VILLAGE WEBSITE

In order to help publicise the Little Bromley Festival of Flowers & Music, the simple website www.littlebromley.org.uk was set up along with a sister website www.greatbromley.org.uk.

Both sites are obviously in their infancy at present.

The intention is to try to keep the sites updated on occasion with information from this magazine, but I am also open to suggestions and requests for content that any of you may be interested in seeing on the websites.

I would certainly be interested in publishing any interesting village photographs that can be provided, preferably electronically, but otherwise can be scanned and returned.

There is also the possibility of your having a personal email address associated with the village names eg tom.smith@littlebromley.org.uk

If you are interested in contributing or commenting on any matter concerning the future of these websites, please contact me at hugh@greatbromley.org.uk. Any feedback will be reported ready for the next issue.

Hugh Frostick



CLASSIFIED ADVERTISEMENT

Free Horse Manure - straw based. Whole manure heap or collect to suit your needs. You will need to bring own bags or trailer. Collect any time.

We also have a small heap of manure mixed with woodshavings if you would like to help yourself.

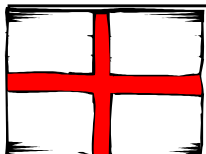
"Mousetraps", Parsons Hill, Gt Bromley (behind vehicle recovery complex).



GREAT BROMLEY & DISTRICT CRICKET CLUB

100 CLUB WINNERS FOR MAY

1st. Mrs Debbie Wright.
 2nd. Mrs. Julie Hitchcock.
 3rd. Miss Sarah Wilkinson.



Brenda and Richard welcome you to

“THE BROMLEY CROSS INN”

For fine ales and good food, brought to you in a friendly, welcoming atmosphere and comfortable, homely environment.

EVENTS

Sunday, 18th July
THE CROSS INN ANNUAL CHARITY COUNTRY FAIR
 3.00PM - 6.00PM

All the fun of the fair for all the family. New games and attractions join the traditional favourite sideshows, so you'll have a great afternoon when your only problem is deciding what to try first -

CORK GUN before **COCONUT SHY?** **CAN THE CAN** before **CHINA CRASH?**

Go for **GOLF** or **DABBLE FOR DUCKS?**

So much to do - so little time!

FANCY DRESS COMPETITION

The theme this year is **Story Book Characters**.

Age categories 0-2, 3-5, 6-8, 9-11

Judging commences at 4.00pm in the Marquee.

CREAMS TEAS, BBQ, RAFFLE, TOMBOLA, BAR OPEN UNTIL 6.00PM

All proceeds go to East Anglian Childrens' Hospices & Essex Wildlife Trusts.

Last year we raised £1,000. Can you help us to raise more this year?

You can - just by coming along for a fun time.

- **Thursday, 22nd July CHARITY QUIZ NIGHT 8.30 pm start**
In aid of Leonard Cheshire Home (Seven Rivers). £2.50 per head includes light supper. Please book your table to avoid disappointment.
- **Wednesday, 28th July MUSIC NIGHT 8.00 pm start**
Sing, play or just listen and enjoy traditional unplugged music and verse.

Non-Smoking Restaurant

Open for lunches Wednesday, Thursday and Friday as well as Sundays. Last orders 1.45pm. Evening meals Wednesday - Sunday inclusive.

Telephone 01206 230282



“OLD COURTHOUSE INN”

Harwich Road • Great Bromley
 Tel: 01206 250322 • Fax 01206 251346
 Email: oldcourthouseinn@talk21.com
 www.oldcourthouseinn.co.uk

Four ♦♦♦♦
 Tourist Board Recommended
BED & BREAKFAST

10 EN-SUITE ROOMS, BED & BREAKFAST

New Comfortable Lounge area

Large Bar Restaurant & Bar Menus

Specialising in Fresh Fish, Steaks and Home-Made Dishes

Specials Board

Thursday is Curry Night: £9.50 three courses

Sunday Roasts—1 course £6.50, 2 courses £8.50, 3 courses £10.50

Lunch Time Specials from £4.50

Full Menu Always Available

Cooking till 10 pm and Sunday 9.30 pm

Large Car Park and New Courtyard Area

OPEN ALL DAY

Breakfast, Morning Coffee, Lunch, Afternoon Cream Teas & Evening Meals

Get Your Lawn Mower Ready

at

Richard Kimberley Services



**ALL PEDESTRIAN
 ROTARY AND
 RIDE ON MOWERS**



Engineering workshop established over 20 years. Our regular customers come back year after year to have their lawnmowers prepared for the grass cutting season. Why not come to us too?

PROVEN WORKMANSHIP

COMPETITIVE PRICING AND WE DON'T MAKE YOU WAIT!

FREE LOCAL COLLECTION AND DELIVERY SERVICE

Also specialists in welding of aluminium, stainless steel, magnesium and cast iron components.

Telephone: 01206 230964

88 Hungerdown Lane, Lawford, Manningtree.

SAUKA

GROUNDWORKS & PLANT HIRE



FREE ESTIMATES
ALL TYPES OF GROUNDWORKS &
LANDSCAPING UNDERTAKEN

PATIOS TARMACING SLABBING CONCRETING
BLOCK PAVED DRIVEWAYS TURFING FENCING
GARDEN WALLS FOOTINGS CONSERVATORY BASES
ESTENSIONS DIGGER & PLANT HIRE

STEPHEN SAUKA
Dakas House
Shop Road
Little Bromley
Essex CO11 2PX

Tel: 01206 390082/3
Mobile: 07850 576028



MSS GARDEN MACHINERY CENTRE

"Where Service & Reliability Count"

SALES SERVICE SPARES

COMPLETE RANGE OF MACHINES, SPARES
SAFETY CLOTHING & ACCESSORIES
BRUSHCUTTER, HEDGETRIMMER & CHAINSAW SPECIALISTS

ALKO - ATCO - STIGA - MOUNTFIELD
SNAPPER - STIHL - HAYTER - MASPORT
SIMPLICITY - QUALCAST



www.mowerandsaw.co.uk



CROWN LANE SOUTH (Off John De Bois Hill)
ARDLEIGH COLCHESTER CO7 7PL

Tel: 01206 230180

ST. GEORGE'S SCHOOL, GT. BROMLEY

Headteacher: Pat Fitzgerald

Telephone: 01206 230305

P.T.A.

A big thank you to everyone who supported our Race Night by sponsoring a race or horse or attending the evening. It was a great night and a fantastic £675 was raised for the School. Thank you to all for your support.

Sam, Louise, Thomas and William Fitzjohn are to take part in a three week trek across Morocco. Starting on 17th September from Portsmouth they will travel through France and Spain to Morocco where they will be crossing the High Atlas, Anti Atlas and Sahara desert. They will be self sufficient stopping for food and fuel approximately every four

days.

Thomas Fitzjohn attends St George's School and the family are obtaining sponsors to support the School's PTA Fund.

Any businesses or individuals who would like to sponsor the family please contact Debbie Wright (01206 250962). We wish them a wonderful and very successful trip.



FUTURE EVENTS

Sunday, 11th July FAMILY FUN DAY
Fun and games, bouncy castle and Bar-B-Q (weather permitting) at the School from 1.00pm.

26th November CHRISTMAS FAYRE

GREAT BROMLEY & FRATING PLAYGROUP



Mondays Wednesdays & Thursdays
9.30am-12 Midday £4.50 per session
2 years 6 months to 5 years at Great Bromley Village Hall.
Contact Gayle (Secretary) on 01206 251349

Our setting has trained staff, is friendly and welcoming. It's fully committed to early years learning. We accept 'nursery education vouchers' funded by the state for three and four year olds, and are regularly inspected by OFSTED to ensure that our educational provision is of an acceptable quality. Our last inspection (December 2003) was with good results, copies of which are available.

We visited St George's Primary School just before half term; it was a really enjoyable morning. The school laid on a musical workshop for the children which they all thoroughly enjoyed! Big thank you to the School for letting us visit them.

We are sadly saying goodbye to Oliver, Isobel and Naomi, as they will be starting school in September. Good luck

to you all.

Term Dates: Break up for summer holidays on Thursday 15th July

Kelly Buckingham



SCALLY WAGS

0 - 5 years

Friday mornings 9.30am - 11.30am
Great Bromley Village Hall

Contact Tracy on 01206 230625 or
Kelly on 07837121695.

Term Dates: Break up for summer holidays Friday, 16th July.



EASTERN WASTE DISPOSAL

"Local Company Looking
After Local People"



Skip Hire

Roll-On Roll-Off Bins



Aggregates
Delivered

Topsoil Available - Be prepared to reshape your garden!

Tel : 01206 30 70 70

Fully Licenced Waste Transfer Station

**enquires@ewd-waste.co.uk
www.easternwastedisposal.com**

Environment

As from September the District Council will provide households with containers for recyclable materials. These will be collected with domestic rubbish but on alternate weeks. There are no plans to collect garden waste.

The District Council has a new contract with Onyx for the cleaning of roads, verges and footways. Rural roads and lanes are cleaned quarterly and those within 30/40 mph speed limits monthly. The schedules are complex and will be placed on the village notice boards. Any cases of unsatisfactory service or 'flytipping' etc should be reported to Tendring Council on telephone 01255 256198.

Post Office

Brenda and Richard hope to open the new post office at the Cross Inn at the end of August.

Telephone box

The damaged box at Chase Road West has been removed for repair and will be replaced in due course.

The next meeting of the Council will be at 7.30 pm on Thursday 8 July 2004 at the Village Hall Great Bromley.

LITTLE BROMLEY PARISH COUNCIL

The next meeting of Little Bromley Parish Council will be held on 8th July. For the time and venue please contact the Parish Clerk on 01206 391015.

Richard Bates Gardener and Decorator



**Do you need a helping hand with your
Garden or Home Decorating?**

**Reasonable Rates
Free Estimates**

**Regular Garden Maintenance Service Available
Telephone 01206 230529**

PARISH COUNCIL NEWS

GREAT BROMLEY PARISH COUNCIL

Report of the Great Bromley Parish Council meeting held on 17 June 2004

Planning

The Council considered and agreed no objections to the following planning applications:

Badley Hall, Badley Hall Road –

garages replacing redundant barns etc

2 Hill Cottages, Rectory Road –

extension

Industrial units, Parson's Hill – storage

and service centre for agricultural and construction machinery

'Arcan', Colchester Road – extension and garage (resubmission)

Great Bromley Village Hall site – extension to cricket pavilion.

Cross Inn, Ardleigh Road – sub-post office room

'Two Hollies', Harwich Road – extensions and alterations

The Council considered and objected to the following planning application on the grounds of intrusive development:

'Merlins Place' 5 Colchester Road – first floor addition and new conservatory

Tendring District Council has approved the following planning applications:

1 Chase Cottages, Stone Road – front extension and new porch.

'Sunnyside', Ardleigh Road – new bungalow (approved with conditions)

'Southview', Frating Road – extension and garage

Tendring District Replacement Local Plan

A dozen residents joined councillors in discussing Tendring's draft new plan. The main concern was with a proposed large industrial estate between Mannheim Car Auctions and Hare Green. The Council expects to make representations to the District Council against this idea. Other developments which are likely to affect the village include: the Bathside Bay container port; a multi-way interchange between the A120 and A133; removal of Hare Green's designation as an area of permitted infill development; eventual dualling of the A120; more garage/hotel services along the A120; possible future large-scale housing development. Comments on the plan must be sent to Tendring District Council on a special form and **by 23 July**. These forms can be picked-up at exhibitions being held locally (see the June *Messenger*) or by telephoning 01255 256148/256150. The Parish Council will agree a response to the plan at its next meeting on 8 July.

Roads

Residents drew the council's attention to a number of incidents of speeding and obstructive car parking in the village. These will be reported to the County Highways Department. Otherwise, the police cannot act unless incidents are reported to them at the time that they occur. The Council has requested that one of the county's temporary mobile speed warning sign should visit the village in the near future.

Hare Green Recreation Ground

The youth shelter and hard games/skateboarding surface have been installed. A 'ROSPA' safety inspection of the play equipment has been carried out and found to be largely satisfactory.

NEWS FROM THE DOCTORS' SURGERY

ARDLEIGH SURGERY

THE SURGERY, DEDHAM ROAD, ARDLEIGH

Dr Bettle update

Dr Bettle is progressing well but continues on a reduced commitment of three surgery sessions per week. We are pleased to have enlisted the help of Dr Lisa Parker and Dr Stephanie Pegge, as locums, who are covering a further three sessions.

Appointments audit.

The practice continues meeting the government target in that patients are able to see a general practitioner within 48 hours for a booked appointment. We also see patients on the same day for 'urgent' reasons. A survey of patients in the waiting room at the end of March indicated that most patients asked to be seen either on the same day or a few days ahead. In all cases bar one, we were able to offer an appointment within the requested timescale. However, not all patients were able to see the doctor of their choice. Most patients requested their appointment by telephone and stated that the time taken to get through to the surgery was acceptable to them. We intend to repeat this survey at other times during the year bearing in mind the sample size of 60 patients was small.

We are able to meet the target by

ensuring that a number of appointment slots are kept available for patients telephoning for a 'same day' appointment. This does of course reduce the number available for pre-booking.

If patients have any views about the efficiency of our appointment system, please write to the Practice Manager.

Primary Care patient survey

At the end of April, a survey was carried out in the surgery over three days using a national survey form as part of the requirements of the new GP Contract. The survey questionnaire was about the quality of the service experienced by patients. We are waiting for the results of this survey which are being analysed by an independent organisation.

Spirometer purchased

The practice has purchased a new spirometer which is used to measure lung function. Selected patients with respiratory problems will be invited to be tested on the spirometer to check out if their medication needs to be changed to improve lung function and will also be used as part of our smoking cessation programme. The cost of £1,600 has been met partly by donations from individuals and the Erdelega WI.

Fred Merrin, Practice Manager

MATERIAL for the **August 2004** edition of 'The Messenger' should therefore reach the Editor, Leonie Henderson, by **MONDAY, 19th July, 2004** please. Contributions from anonymous sources will not be printed. Copy can either be delivered by hand or sent by post, fax or e-mail.

Our thanks to **Seven Rivers Cheshire Home** for sponsoring this month's magazine.

Please support the sponsors of our magazine.

**Pleass Thomson
& Company**
Solicitors

Rosemary Chambers,
91-93 Rosemary Road West,
Clacton-on-Sea,
Essex CO15 1EP

Tel: (01255)221133
Fax: (01255 220055

Miss Jane Pleass, B.A. (Hons)



Orchard Boarding Cattery

Orchard Cottage
Little Bromley Road
Little Bentley
near Colchester CO7 8SS



Tel: 01206 397 096
Email: ken@littledev.demon.co.uk

 **Janina Morris** BA(Lons)
2 Bentley Rd, Lt Bromley, Manningtree, Essex CO11 2PL

Clarinet and Saxophone Tuition
From Beginners to Advanced



Tel/Fax: 01206 391345
Mobile: 07759 148854
Email: janinamorris@hotmail.com

Pestclear

Limited
RATS • MICE • FLEAS • WASPS
COCKROACHES • ANTS • MOLES
INSECTS • WOODWORM etc

Emergency Response - 24 hours - 7 days a week

Telephone: 0800 035 0301

Extra help with maths

EFL and other subjects offered by qualified,
experienced teachers
GCSE, SATS, 11+ and general school work

Please 'phone 01206 251691 for details

Special village rates

 **Amaze
Computers** 

REPAIRS UPGRADES
SOFTWARE PROBLEMS
Contact Charles

Tel: 01206-251528 E-Mail: amaze272@hotmail.com

ALL MECHANICAL & BODY REPAIRS UNDERTAKEN
WELDING & SPRAYING
CRYPTON TUNING

T. & F. MOTORS

(Props. A. R. Sharpe & F. J. Peck)

HORSLEY CROSS GARAGE

HORSLEY CROSS
Nr. MANNINGTREE
ESSEX CO11 2NR
TEL: 01206 392219

 **CATERING & CAKES FOR SPECIAL OCCASIONS**
WEDDING FUNCTIONS
PARTIES
BUSINESS LUNCHES
SPECIALIST CAKES
NOVELTY CAKES
CROCKERY/CUTLERY HIRE
CONTACT:
LINDA PINHEY
FORGE COTTAGE
HALL ROAD
GT. BROMLEY
COLCHESTER
CO7 7TP
Tel: 01206 230126 Email: Ipsweetsuccess20@hotmail.com

ROBERT CAREY

CARPETS & VINYL SUPPLIED & FITTED

PARK FARM BUNGALOW, CHASE ROAD EAST
GREAT BROMLEY

COLCHESTER, ESSEX CO7 7UP

TEL: 01206 257361

MOB: 0794 1149793

FREE QUOTATIONS

HISKEYS FARM KENNELS

Boarding Kennels and Cattery
Open 8am to 8pm - 7 days a week
Quality care for your Dogs, Cats and Small Pets
Playtimes & Country walks for dogs - Cuddles for cats

Competitive rates - Inspection invited
GROOMING PARLOUR - WASH & BRUSH
Tel: Anne, Pete or Stuart on 01206 395657
Spratts Lane, Little Bromley, Essex CO11 2PR



**WOMEN'S
INSTITUTE**

Mr R Stevens of Clacton kindly came along again to this year's Members' meeting and showed us his film called "The Glory of the Garden". It told us the story of the famous Exbury garden down on the Hampshire coast which has been home for nearly 100 years to the Rothschild banking family, who created the beautiful garden of 250 acres with the help of an army of men.

They had to clear the whole estate before Lionel Rothschild set about designing and planting the garden with rhododendrums of every colour. He travelled to Tibet and India, seeking different species and also giant Magnolias. He also developed many different varieties and colours. Edmond Rothschild now lives in Exbury, and, although not a gardener himself, he still takes a great interest in the estate which is now open to the public.

Mr Prentice is the speaker at our July Meeting and his subject is "Gardening - A Learning Curve". Do come along if you are interested, we will be pleased to see you on Wednesday, 7th July at 7.30pm in the Village Hall.

June Willgress

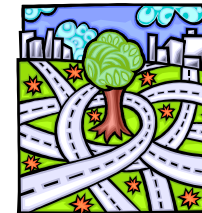


FRIENDSHIP CLUB

We were entertained by the Frinton & Walton Men's Choir at our meeting in June and a donation was sent to St Helena Hospice at their request in lieu of their fee.

The competition for the meeting on 15th July is A SMALL CHINA TRINKET DISH.

On 29th July is our **MYSTERY TOUR** outing followed by a Salad Tea before returning about 6.00pm. Starting time: 1.00pm. BOOK NOW by phoning Beryl on 01206 230578.



Vicky Griffiths

MOBILE CARPET & FLOOR COVERING SHOWROOM

Tel: 01255 830793
Mobile: 07711 745107

Chiltern Farm • Crown Lane
Tendring • Essex CO16 0BH

The Carpet Store that comes to your door

QUALITY CARPETS, VINYL & LAMINATED FLOORING

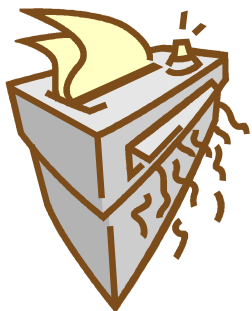
Chose from over 2,000 carpet and flooring samples in the comfort of your own home.

We will provide you with:

- ♦ Expert free fitting;
- ♦ Free estimates;
- ♦ Free insurance quotes;
- ♦ Furniture removing for those who can't manage
- ♦ Prompt friendly services;

Daytime or evening appointments available Distance no object

CORPORATE LESSON



A young executive was leaving the office at six o'clock in the evening when he found the CEO standing in front of a shredder with a piece of paper in his hand. "Listen," said the CEO. "This is a very sensitive and important document and my secretary has left. Can you make this thing work?"

"Certainly, Sir" said the young executive. He turned the machine on, inserted the paper, and pressed the start button.

"Excellent, excellent!" said the CEO. "I just need one copy."

 <p>P.J. SAMPSON</p> <p>BUILDERS COMPLETE BUILDING SERVICE Over 17 Years' Experience</p> <p>Free Estimates Tel: 01206 230619</p>	<p>CURTAINS - CUSHIONS - LOOSE COVERS</p> <p>MADE TO MEASURE at REASONABLE PRICES</p> <p>Please contact: Alison Everington 01206 230956</p>
 <p>Professional Web Design & Marketing, Content Management & e-Commerce</p> <p>Not yet got an internet presence for your business? We will happily create a professional, attractive website for you... which will be found easily in the search engines! We are very competitive, so get it done properly by us and be certain your site is working its hardest for you.</p> <p>Reference sites: Larger: www.kentblaxill.co.uk Medium: www.jacksons-insurance.co.uk Smaller: www.essential-chiropractic.co.uk</p> <p>Contact: Hugh Frostick PhD 41 All Saints Avenue, Colchester CO3 4NZ Phone: 01206 509570 E-mail: hugh@vcsnet.co.uk</p> <p>Established 1995 with many years of experience www.vcsnet.co.uk</p>	<p>S P CONTRACTS GENERAL BUILDER & HARD LANDSCAPER TEL: 01206 231866 (Eves) MOBILE: 07976 264162</p> <p>Specialists in ground work, drainage, general building & home improvement with over 20 years' experience examples of the services we offer are:</p> <p><i>Patios - slab or block paving, shed/greenhouse bases and building erection, garden walls and fencing, paths, driveways and general drainage including guttering.</i></p> <p><i>Conservatories, porches, extensions and garage conversions</i></p> <p><i>Internal renovation: moving doors or windows, bricking up or recovering fireplaces, levelling floors or putting in ramps.</i></p> <p><i>We are honest and reliable, friendly and affordable.</i></p> <p><i>We give free estimates and have Product & Public Liability Insurance</i></p>

GREAT BROMLEY VILLAGE HALL CHARITY TRUSTEES

The Management Committee met on 25th May in the Committee Room of the Village Hall.

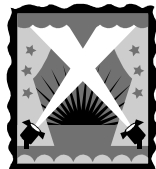
Some improvements have been made to the stage area, so that its appearance is more presentable when the Hall is being used for other activities rather than stage shows. Roof tiles have been replaced following damage done by the high winds of a couple of months ago. Fire equipment at the Hall has been checked, one extinguisher having to be replaced and electrical portable items tested, both annual requirements.

The Hall charges have again been reviewed and the Committee regret that they will be increased as from 1st September, 2004 in order to keep pace with rising running costs due to general inflation as seen in our current invoices received from the normal sources. Just like yours and ours, I guess.

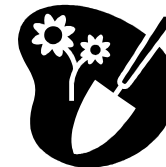
We are to have a coffee morning at the Hall on Saturday, 3rd July from 10.30am till 2.00pm. Cake, Raffle, Tombola and Bric a Brac Stalls and light lunches will be available for your enjoyment. Why not come along for a chat, some fun, tea, coffee and your lunch? We also hope that the WI and the Playgroup will each have a Stall for their own funds.

The Village Hall Management Committee are scheduled to meet again on Tuesday, 13th July at 7.30pm.

Bevan Willgress



GARDENER'S CORNER FOR JULY



Take semi-hard cuttings of the following: Camellia, Cistus, Ceanothus, Escallonia, Hydrangea, Lonicera (honeysuckle) and Pyracantha.

ROSES: Keep dead heading Hybrid Tea and Floribunda. Apply fertiliser.

CHRYSANTHEMUMS: For large blooms reduce stems to six - begin disbudding.

DAHLIAS: Keep a watch for black fly which thrive during this hot weather.

BULBS: At the end of the month plant CROCUS for autumn flowering.

BEARDED IRISES: May be divided at the end of the month. Water until divisions are established.

Frank Griffiths

"RASHERS"

Essex Farm Bacon Made to Order
P. Rowe & Son
Lilleys Farm, off Carrington Rd, Gt Bromley, Colchester, Essex CO7 7XA
Tel: 01206230398
Email: nrowe@farmersweekly.net



Stuart Harris CABINET MAKER

01206 230078

Designer & Maker of purpose built, tailor made and hand crafted furniture. Restoration and re-polishing of antiques.

Forthcoming Events

JULY

- 1 Coffee under the Tower, St Mary's church, Ardleigh, 10.30am
- 3 Coffee morning, Village Hall, 10.30am
- 3 Charity BBQ & Motorcycle Trial, Seven Rivers Gt Bromley, 2.00pm
- 7 WI meeting, Village Hall, 7.30pm
- 8 Little Bromley Parish Council meeting
- Great Bromley Parish Council meeting, Village Hall, 7.30pm
- The Bromleys PCC meeting, 7.00pm
- 10 Tendring Hundred Show
- 11 PTA Funday, St George's School, from 1.00pm
- 13 Village Hall Management Committee meeting, Village Hall, 7.30pm
- 15 Friendship Club meeting, Village Hall, 2.00pm
- Ardleigh PCC meeting, 7.00pm
- 17 Strawberry Tea, Chaffinch Gardens
- 18 Country Fair, Cross Inn
- 29 Friendship Club Mystery Tour starting 1.00pm



SEPTEMBER

- 15 Sponsored Churches Cycle Ride
- 24 Church Harvest Barn dance

OCTOBER

- 2 Organ recital, St Mary's Church, Ardleigh, 7.30pm
- 3 Harvest Lunch, Gt Bromley Village Hall, 1.00pm

NOVEMBER

- 20 Christmas Fayre, Village Hall
- Royal Hospital School Band concert, Ardleigh Church, 7.30pm
- 26 St George's School P.T.A. Christmas Fayre

RECYCLING IN THE BROMLEYS

Area: Most of Great Bromley		
Wednesdays	14th, 28th July	11th, 25th August
Area: Briar, Ardleigh, Carrington & Colchester Roads & Lilleys Lane		
Mondays	5th, 19th July	2nd, 16th, 31st(Tues) August
Area: Little Bromley		
Mondays	5th, 19th July	2nd, 16th, 31st(Tues) August

SEVEN RIVERS CHESHIRE HOME GREAT BROMLEY

Saturday, 3rd July

Charity BBQ
Motorcycle Trial

Starts 2.00pm



BRIGHTLINGSEA FARMERS' MARKET



29th July 9am - 1pm
Brightlingsea Community
Centre, Lower Park Road
For further details contact Bob Shotton
(01206 302669)

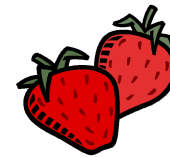
COFFEE UNDER THE TOWER

at
S Mary's Church Ardleigh

1st July
10.30 am - 12 noon



STRAWBERRY TEA



on
17th July
at
Chaffinch Gardens

Contact the Rector for more details

The Village Hall Management Committee
are holding a

COFFEE MORNING

at
Great Bromley Village Hall
on Saturday, 3rd July



10.30 am till 2.00pm

Cake Stall
Tombola
Bric a Brac Stall
Raffle

Light lunches



Come along for a chat, some fun, tea,
coffee and your lunch!!

ST. GEORGE'S SCHOOL P.T.A.

Sunday 11th July
at the School
from 1.00pm



Fun and Games
Bouncy Castle
Bar-B-Q (weather
permitting)

