

ST. GEORGE THE MARTYR, GREAT BROMLEY

united with St. Mary the Virgin, Ardleigh



Services for July

1st	11.00am	The Eucharist	<i>Seven Rivers</i>
2nd	9.00am	The Eucharist & Rosary	<i>St. Mary the Virgin</i>
Sunday 3rd		Trinity 6	
	7.30am	Morning Prayer	<i>St George the Martyr</i>
	8.00am	The Eucharist	<i>St. George the Martyr</i>
	10.30am	The Parish Eucharist	<i>St. Mary the Virgin</i>
	6.30pm	Evening Prayer	<i>St. George the Martyr</i>
4th	9.15am	The Eucharist	<i>St. Mary the Virgin</i>
6th	7.00pm	The Eucharist	<i>St. George the Martyr</i>
7th	7.00pm	The Eucharist	<i>St. Mary the Virgin</i>
8th	11.00am	The Eucharist	<i>Seven Rivers</i>
9th	9.00am	The Eucharist & Rosary	<i>St. Mary the Virgin</i>
Sunday 10th		Trinity 7	
	7.30am	Morning Prayer	<i>St. Mary the Virgin</i>
	8.00am	The Eucharist	<i>St. Mary the Virgin</i>
	10.30am	The Parish Eucharist	<i>St. George the Martyr</i>
	6.30pm	Evening Prayer	<i>St. Mary the Virgin</i>
11th	9.15am	S Benedict	
		The Eucharist	<i>St. Mary the Virgin</i>
13th	6.00pm	The Eucharist	<i>Hamilton Lodge</i>
14th	7.00pm	The Eucharist	<i>St. George the Martyr</i>
15th	11.00am	The Eucharist	<i>Seven Rivers</i>
16th	9.00am	The Eucharist & Rosary	<i>St. Mary the Virgin</i>
Sunday 17th		Trinity 8	
	7.30am	Morning Prayer	<i>St. George the Martyr</i>
	8.00am	The Eucharist	<i>St. George the Martyr</i>
	10.30am	The Parish Eucharist	<i>St. Mary the Virgin</i>
	6.30pm	Evening Prayer	<i>St. George the Martyr</i>
18th	9.15am	The Eucharist	<i>St. Mary the Virgin</i>
20th	7.00pm	The Eucharist	<i>St. George the Martyr</i>
21st	7.00pm	The Eucharist	<i>St. Mary the Virgin</i>
22nd		S Mary Magdalen	
	11.00am	The Eucharist	<i>Seven Rivers</i>
23rd	9.00am	The Eucharist & Rosary	<i>St. Mary the Virgin</i>
Sunday 24th		Trinity 9	
	7.30am	Morning Prayer	<i>St. Mary the Virgin</i>
	8.00am	The Eucharist	<i>St. Mary the Virgin</i>
	10.30am	The Parish Eucharist	<i>St. George the Martyr</i>
	6.30pm	Evening Prayer	<i>St. Mary the Virgin</i>
25th	9.15am	S James	
		The Eucharist	<i>St. Mary the Virgin</i>
27th	7.00pm	The Eucharist	<i>St. George the Martyr</i>
28th	7.00pm	The Eucharist	<i>St. Mary the Virgin</i>
29th	11.00am	The Eucharist	<i>Seven Rivers</i>
30th	9.00am	The Eucharist & Rosary	<i>St. Mary the Virgin</i>
31st		Trinity 10	
	7.30am	Morning Prayer	<i>St. George the Martyr</i>
	8.00am	The Eucharist	<i>St. George the Martyr</i>
	10.30am	The Parish Eucharist	<i>St. Mary the Virgin</i>
	6.30pm	Evening Prayer	<i>St. George the Martyr</i>

JULY 2005

Vol 19 No 4

NO PARTICULAR PLACE TO GO

As a rural community how might the proposals for "road charging" on the use of cars affect us in our villages?

The bus service is spasmodic and the railway stations (Manningtree, Gt Bentley, Wivenhoe and Colchester) are at least 5 miles away which means that we therefore tend all to rely upon cars to a greater or lesser extent.

With most of our practical shopping geared around supermarkets, none of which are again less than five miles away, the bicycle - lovely for days out with the family, exercise or a quick trip to the local post office or local stores - is of not much use unless one has the time to do the journey to and from the shops on an almost daily basis. There is, of course, internet shopping but not all the supermarkets have the facility or will deliver out to the Bromleys - always supposing you have a computer in the first place.

The idea for a tax on a mileage basis is not a bad one and favours those who do a low mileage or travel little but is hard on those who need to travel to, or for, work at peak times. Although the idea of removing congestion from the M and A roads is admirable, the reason such roads were built, or improved, to relieve the pressure on

country roads and thoroughfares through villages and small towns.

Is there a risk therefore that people will use our local roads thereby increasing traffic load on them in preference to the higher charges on the nearby larger roads? That said in rural communities, where running two cars is almost a necessity, there may be an advantage in being able to spread one's annual mileage between two vehicles more economically. However, as I understand it, the present proposals do not intend to differentiate between the large gas guzzler and the small economic car which appears to fly in the face of efforts to reduce our consumption of fossil fuels and hydrocarbons.

Although the public at large has not been asked their views, this is no reason why we should not think about the question and how it affects us so that when we have formed our conclusions we can make them known.

As yet the proposals are at an early stage. However, whatever is decided upon could have a serious impact on rural communities such as ours one way or another.

Leonie Henderson



MATERIAL for the **August 2005** edition of 'The Messenger' should reach the Editor, Leonie Henderson, by **MONDAY, 18th July, 2005** please. Contributions from anonymous sources will not be printed. Copy can either be delivered by hand or sent by post, fax or e-mail. (see inside front cover for details)

Our thanks to **Hot-Line Printers** for sponsoring this month's magazine and for printing it every month so efficiently.

Please support the sponsors of our magazine.



**THE UNITED PARISHES OF ARDLEIGH AND THE
BROMLEYS**

The Rectory, Hall Road, Great Bromley, CO7 7TS



Dear Parishioner,

I am blessed here by having three very beautiful ancient churches in which to join with my brothers and sisters for the worship of God, or simply sit by myself and as was once famously said "I look at Him and let Him look at me".

Sadly, S Mary's, Little Bromley is now "In retirement" as it was deemed to be no longer of need for Christians to meet regularly in. Fortunately, the Churches Conservation Trust (which is funded by the C of E's general account and through private donations) care for it because it is recognised as part of our nation's heritage. So you can ask for a key (keyholders advertised in the porch) and spend some time there.

S Mary's, Ardleigh has stood at the centre of the village for centuries and thanks to the Victorians is in generally good nick. The paintings earn it a place in the guide books as a "must see" and people do come from all over to experience the beauty of the building.

Much simpler is S George's, Great Bromley where the architecture gets it a place in the "Thousand Best Churches" book. It has stood on its vantage point for hundreds of years. As in the others it has witnessed to all who pass by the honour

given to God by those who live here.

The time has come to look to the future use of S Mary's and S George's for the worshipping communities here. As we have grown, and expectations of what is necessary have changed, the Church Councils have had their architect draw up plans for the provision of toilet facilities, meeting space and a simple refreshment making place, the draft plans of which can be seen in the Churches. Now is the time to take a look and make your constructive criticisms, which I hope people will do.

At Ardleigh we shall use the proceeds of the sale of the Vicar's Room to finance this. At Great Bromley we will need to raise the funds, a conservative estimate of £60,000 from grants, fundraising and private donations.

Fortunate as we are here, we are not looking to compete with the schools, chapel and village halls who already serve us so well. The idea is that the Churches will continue to be churches, places where above all God is experienced, honoured and worshipped. Something that has happened here for centuries and with these developments will surely be so for many to come.

May God bless you,

Fr Nicolas.



Baptism

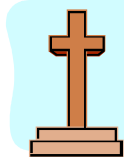
Sunday, 31st July
at 6.30pm

at St. George's Church, Gt.
Bromley

Nickolas Jensen David Arnold WALDOCK
grandson of
The Revd Arnold Waldock

ARTHER "SMILER" MARSHALL

Rest in Peace



Arthur was born on 15th March, 1897 at Elmstead Market. The Vicar of Elmstead, The Revd Osmond Cookson, baptised him at the Parish Church of St Laurence and St Anne on 3rd May, 1897. He was a pupil at the old Elmstead School in School Road there. He began work when he was 13 and when World War I broke out put up his age like many other "boy" soldiers and joined the Army. He served in the cavalry and was one of the last to draw a sword and charge in battle. Wounded in 1917 he continued to serve.

After the war he returned to Elmstead and married his childhood sweetheart, Florrie Day, in 1924 and they moved to Great Bromley and occupied Peace Cottage while he worked for Mr Percy Crossman; he was a huntsman and whipper-in for the hunt. The pair had five children of whom John was one of the twins and now aged 73. In 1939 the couple went to Ashted, Kent where he died on 16th May, 2005, a grand old gentleman who will be remembered.

A photograph of him with Mr Crossman and the late Herbert Hayward in front of Great Bromley Hall is in "Where the Broom Grows".

John Appleby

RURAL ACTIVITY GRANT SCHEME (RAGS)

The Rural Activity Grant Scheme (RAGS) is the small grant programme for Tendring. Supported by the Rural Renaissance Fund it is available to all voluntary and charity groups, including Parish Councils, in rural Tendring.

Applications can be made to support a variety of projects including play equipment, community events, village newsletters and leaflets. Since 2004 the fund has also been able to accept applications for economical and environmental projects.

The amount of grant requested must not be more than 50% of the project costs, up to a maximum of £1000, and match funded by another source e.g. Council or any other source of financial support. The total grant requested and the other sources of funding must equal the total costs of the project.

If you have an idea for a project, large or small, we can look for funding opportunity from various sources by



A. CLARKE MEMORIALS (Monumental Mason)

**A caring & helpful service to create a memorial to your requirements
Also additional inscriptions & headstone cleaning service**

**Call for brochure or visit showroom
Home visits on request**

**Tel: 01206 761167 or 07879650980
Fax: 01206 541907**

**Unit 12
Gosbecks Business Park
Gosbecks Road, Colchester,
Essex CO2 9JS**

contacting Charlotte Foster, Tendring Rural Projects Officer c/o TDC Regeneration & Community Services, Council Offices, Thorpe Road, Weeley, CO16 9AJ. Tel: 01255 686369, Fax: 01255 831291, email: cfoster@tendringdc.gov.uk or www.essexrcc.org.uk.

GREAT BENTLEY SURGERY NEWS

THE HOLLIES, GREAT BENTLEY

The nights are drawing out, the sun shines (in theory) and the weather is becoming warmer. The summer birds, butterflies and flowers brighten up the countryside. Everyone feels fitter and happier, which is wonderful.

The drawback seems to be that some youngsters - whether they are local or not, I can't say - congregate around the surgery car park, Bentley House and the old forge, leaving litter and, deliberately or otherwise, cause damage.

We've all been young and, I guess, most of us have had our wilder moments. However, some of the damage done, for example, pulling a gas vent out of the wall, causes danger to the people doing the damage and to the occupants of the building. It needs to be clearly understood that anyone causing damage to the surgery is performing a criminal act and will be prosecuted if caught.

I am told that there are still some people who don't realise that the surgery is closed on Saturdays these days. Just in case you didn't know, normal surgery hours are now 8.30am to 6.30pm, Monday to Friday. If you need urgent medical treatment outside these hours, then the thing to do is to ring the surgery number, 01206 250691. You will then be automatically transferred to the Primecare out of hours service who will look after you.

Primecare are there, available and working whenever we are not. They provide full surgery-type services to deal with urgent matters which can't wait until we re-open. They employ fully qualified and experienced GPs and we would expect you to be just as well cared for medically by them as you would be by the GPs here. They will not, however, issue non-urgent repeat prescriptions or deal with people wanting to make appointments.

It is worth reiterating also that Primecare are only there for urgent medical matters. If you have a problem which can wait until the surgery is open again, please ring us during normal hours.

Have you ever wondered how your medical notes get from surgery to surgery when you change doctors? Well, amazingly in this day and age, it is all still done by couriers driving large boxes of paper around the country, rather than by any of the hi-tech systems which are so reliable and easily available these days.

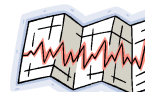
I suppose that one reason is that some doctors' surgeries still don't record everything on computer like we do. We still receive huge bundles of paper notes for many new patients, when a floppy disk, a CD or even a short burst of encrypted electronic data would be such an easy option.

On the plus side, this means that we have Nicky Justice, our featured employee of the month, who goes through all new notes putting essential medical information onto our computer. Be it what you have on repeat prescription, the result of an x-ray taken a few years ago or even details of the immunisations that you had as a child, if it's there in your paper notes, Nicky will ferret it out and code it into our computer records.

Nicky has been trawling through dusty old papers for us for two years now and is diplomatic enough to say that it doesn't seem that long. On the personal side, she is a qualified nurse who presently devotes most of her time to looking after children, Hannah and Rebecca, and husband Andrew, a GP at another local practice. When she has time, she likes cycling and was fit enough to do the Tour de Tendring this weekend with the whole family.

It's often people like Nicky, who aren't necessarily at the sharp end of the practice, seeing people at the counter or answering the telephone, who are vital in making sure that the doctor can look after you properly. They might occasionally be overlooked, but they are never under-valued.

Hugh Cronin, Practice Manager





The Dog House
 Burnt Heath House
 Frating Road
 Ardleigh
 Colchester
 CO7 7SY

The Dog House
 Grooming Service

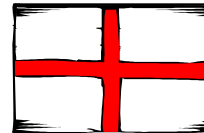
Call Jo on:
 01206 230101
 07759 550587

For bathing, clipping and trimming to just brushing out!

Female Painters & Decorators

All Interior & Exterior Work
 Soft Furnishings
 10 years experience. Reliable & Tidy
 Free quotations, colour & design advice
 Eco friendly, non-toxic paints available

Contact: Sara or Anke



Brenda and Richard welcome you to

“THE BROMLEY CROSS INN”

For fine ales and good food, brought to you in a friendly, welcoming atmosphere and comfortable, homely environment.

EVENTS during JULY

Thursday 21st CHARITY QUIZ 8.30pm PROMPT start
 In aid of East Anglia Children’s Hospice. Teams of up to 4. £2.50 per head includes light supper

Wednesday 27th MUSIC NIGHT 8.15pm start
 Sing, play or just come along and enjoy an evening of good music and entertaining recital.

ADVANCE NOTICE

Saturday, 17th September CHARITY RACE NIGHT in aid of Barnardo’s
Friday, 21st October TRAFALGAR DAY CELEBRATION to mark the 200th anniversary of Nelson’s victory over the French and Spanish.

Non-Smoking Restaurant
 Open for lunches Wednesday, Thursday and Friday as well as Sundays.
 Last orders 1.45pm. Evening meals Wednesday - Sunday inclusive.

Telephone 01206 230282

GREAT BROMLEY POST OFFICE at The Cross Inn

Ardleigh Road, Great Bromley CO7 7TL

Telephone: 01206 231073

Mon/Tues: 9.30am-2.00pm Wed/Thurs/Fri : 10.00am - 2.00pm

Sat : 9.00am-midday



- Please note that there is now a wide selection of cards and wrapping paper available.
- A dry cleaning service is also available.

Please ask for details at the counter.

SAUKA

GROUNDWORKS & PLANT HIRE



FREE ESTIMATES
ALL TYPES OF GROUNDWORKS &
LANDSCAPING UNDERTAKEN

PATIOS TARMACING SLABBING CONCRETING
BLOCK PAVED DRIVEWAYS TURFING FENCING
GARDEN WALLS FOOTINGS CONSERVATORY BASES
ESTENSIONS DIGGER & PLANT HIRE

STEPHEN SAUKA
Dakas House
Shop Road
Little Bromley
Essex CO11 2PX

Tel: 01206 390082/3
Mobile: 07850 576028



Established 20 years
in Ipswich
town centre

SMITHS VILLAGE HOMES

Have now opened their office at

1, THREAD NEEDLE STREET
DEDHAM

We specialise in the sale of village, country and Equestrian properties

If you're thinking of selling, contact us for a free market appraisal

Tel: 01206 322111



LITTLE BROMLEY VILLAGE SIGN

On 21st May, 2005 the final chapter of the long unveiling of Little Bromley's village sign took place at the site of The Old Wheatsheaf Public House in Shop Road. Mr John Appleby, who was asked to perform the unveiling, and a small gathering of residents enjoyed a glass of bubbly in the chilly wind and an unfortunately timed shower which, however did not dampen this special occasion. The local press, who were informed, failed to appear interested in the event. Mr John Appleby gave a short speech outlining a brief history of Little Bromley and of his time as Headmaster of the Old Village School. The gathering waited with anticipation as to what the sign depicted and all seemed pleased with the end result.

The sign is double sided with one side depicting the village church of St Mary and the other is of an excellent set of plough horses, so typical of this area before mechanisation when ploughing competitions were held locally. The heraldry depicts the family shields of local families long gone. There are three - one represents the county of Essex, one is blue and gold with black diagonal stripes which historically belong to the "Marlon family" who owned Braham Hall with the third being blue and gold with an eagle in the centre which belonged to the "Godmanston family" who were the owners of Little Bromley Hall.

The Parish Council and Amenities Committee were fortunate that funding for the sign was already in place. However more was needed to complete the project whereupon they set about organising fund raising events to boost the fund. A vote of thanks must go to the Parish Clerk for his extensive groundwork enabling the project to move forward.

The next issue was to find an acceptable site in which the sign could be placed. A possible four were discussed but it was felt that the most appropriate was close to one of the oldest remaining

buildings in Little Bromley. Then came the most demanding time for the project - that of obtaining planning consent from the Local Authority and County Highways Departments. Endless correspondence then ensued between the two and the Parish Council over an Act dating back to the 19th century. However this delay never halted the Council and Amenities Committee from their goal. Finally, permission was granted which meant we could now move forward with the sign and to 21st May, 2005 - a day for Little Bromley to remember.

As Chairman I would like to thank the Councillors and Amenities Committee members for their efforts and support on this project as well as a big thank you going to the residents who gave support to the fund raising events with the use of premises, equipment and donations. Also thanks to the residents who supported these events. Thank you to Mr John Appleby for his historic input and unveiling of the sign and last but not least thanks to H & K Mabutt of Danbury for their design and craftsmanship in the making of Little Bromley Village Sign. Thank you all.

*Ken Hatch
Chairman, Little Bromley Parish Council*

Little Bromley Fete

To be held at
The Old Rectory
Church Road, Little Bromley
on Saturday, 16th July
starting at 12 noon.
Entry fee/ticket holders entitled to
free Barbeque Meal and glass of
wine/soft drink
£4.00 adults
£2.50 children under 12



Should you have any items you wish to
donate or require tickets
please telephone 01206 392216

PARISH COUNCIL NEWS

GREAT BROMLEY PARISH COUNCIL

Report of the Great Bromley Parish Council meeting held on 9 June 2005 Planning

The Council considered and agreed no objections to the following planning application:

18 Meadow Close – rear extension
Tendring District Council has approved the following planning application:

Portlands Farm Barn, Harwich Road –
Cart Lodge.

Planning Inspectorate appeal decisions:

**Gt Bromley Post Office and Stores,
Brook Street** – change of use to
residential (appeal dismissed)

Junedene, Frating Road – two new
houses (appeal allowed)

Roads

A footway along Hall Road and adjacent to the Cheshire Home has now been installed.

In order to deter speeding in the 30 and 40 mph areas the police continue to carry out random speed checks. At least one motorist has been penalised after travelling at over 60 mph in the 30 mph limit.

Rural development

Charlotte Foster, the Rural Community

Council projects officer for Tendring will be speaking about support services for rural development at the council's next meeting.

Free paint

Free paint is available to community and voluntary groups from 'Re>Paint Colchester and Tendring'.

Contact: 01206 367776 or email repaint@en-form.org.uk, or see website – www.repaintessex.org.uk.



Telephones

BT will be converting the Hare Green telephone kiosk (01206-250823) to card/non-cash charging only. Please contact the Clerk if you object to this proposal.

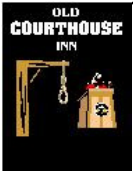
Electoral registration notices

Tendring District is looking for someone locally who can personally deliver electoral registration notices to all houses in the village. There is a payment of 23p – 33p per item. If you are interested please contact Judith Raison, Tendring Electoral Services Officer, on 01255 686586/686868.

The next meeting of the Council will be at 7.30 pm on Thursday 14 July 2005 at the Village Hall

LITTLE BROMLEY PARISH COUNCIL

The next meeting of Little Bromley Parish Council will be held on **Thursday, Thursday 4th August ,2005 at 7.30pm.** For details of venue please ring Parish Clerk.



“OLD COURTHOUSE INN”

Harwich Road • Great Bromley • Colchester
Tel: 01206 250322
www.theoldcourthouseinn.co.uk

Four ♦♦♦♦
Tourist Board
Recommended
**BED &
BREAKFAST**

BED & BREAKFAST • 10 EN-SUITE ROOMS

Large Bar Restaurant & Bar Menus

Specialising in Fresh Fish, Steaks, Home-Made Dishes, Vegetarian Dishes

ALL FOOD COOKED FRESH ON PREMISES

Thursday is Curry Night plus full menu

Sunday we serve a choice of roasts plus the full menu is available

We serve food until 10.00pm every evening

Sunday until 9.30pm

OPEN ALL DAY

Breakfast, Morning Coffee, Lunch, Afternoon Cream Teas & Evening Meals

We have our full menu available all day



**HIGH QUALITY
CATERING for
SPECIAL OCCASIONS**

WEDDING FUNCTIONS
PARTIES
BUSINESS LUNCHES
FUNERALS etc.

Tel: 01206 230126

Email: lindapinhey@hotmail.com

CONTACT:
LINDA PINHEY
FORGE COTTAGE
HALL ROAD
GT. BROMLEY
COLCHESTER
CO7 7TP

Stuart Harris CABINET MAKER

01206 230078

www.harriscabinetmaker.co.uk

Designer & Maker of purpose built,
tailor made and hand crafted furniture.
Restoration and re-polishing of antiques.

Pot Doodles Ceramic Painting Parties



*Ladies nights, birthday parties,
charity events, craft fairs etc.*

Guaranteed no mess and lots of fun.

Apryl Brincklow, Heathdene, Ardleigh Road, Great Bromley, CO7 7TL
Telephone: 01206 230483
E-mail: apryl.brincklow@btinternet.com

Michael J Byles

Plumbing & Heating

Specialist in Oil Boiler
Installations, Maintenance
& Servicing - Oftec registered

General Plumbing & Heating work also undertaken

Tel: 01206 822225
Mobile: 07717 012433
Email: michaeljbyles@aol.com

UK ALARM SYSTEMS

INTRUDER ALARMS
CCTV
SECURITY LIGHTING

call 01206 251857
07835982666

Pleass Thomson & Company Solicitors

Rosemary Chambers,
91-93 Rosemary Road West,
Clacton-on-Sea,
Essex CO15 1EP

Tel: (01255)221133
Fax: (01255) 220055



Miss Jane Pleass, B.A.

ST. GEORGE'S (C OF E) SCHOOL, GT. BROMLEY

Head teacher: Pat Fitzgerald
Telephone: 01206 230305

In May the school had its OFSTED inspection. You will have read in the daily newspapers that the inspections have been revised to have less inspectors for less days in future in order to reduce disruption and reduce costs. Our school was one of the last to have this five day one.

There is a lot of preparation for an inspection as the “audit” is very thorough and all the staff are involved together with Governors and Parents at some point.

We are not allowed to tell you what the result is until the draft report has been approved by all parties.

We will aim to publish a full report in the next issue of the Messenger so that all our community is aware of their finds.

Len Christodoulides



ST. GEORGE'S SCHOOL P.T.A.

Sunday, 17th July

FAMILY FUN DAY.

On Sunday, 17th July we are holding our Family Fun Day. It is to be held at the school from 2.00pm onwards. There are to be family games, a bouncy castle, raffle and stalls. Please come along and have a fun day.

GREAT BROMLEY & FRATING PLAYGROUP



Mondays Wednesdays & Thursdays 9.30am-12 Midday
£5.00 per session 2 yrs 6mths to 5yrs
at Great Bromley Village Hall.

Contact 07712961940 and ask for a member of staff

Over the last few weeks we have been covering our topic called “Growing”; this included plants and ourselves. The Children have had much enjoyment growing their own sunflowers and tomato plants. This has been a really fun topic which all children have taken part in.



We are now open on Wednesday afternoons and are able to offer a lunch club that combines with an afternoon session thus making it a whole day at playgroup for some children. It seems to be working very well at the moment and we hope it continues to be popular with all. If anyone is interested in this please contact a member of staff at Playgroup.

Our summer outing this term is going

to be to Easton Farm Park. We are really looking forward to taking all the children there. Let's hope the weather is kind to us! We are teaming up with Scallywags again so it will be nice for us all to get together.

We are sadly saying Goodbye to some of our children who will be leaving at the end of this summer term to start school. We wish all the best and good luck to: Thomas, Brandon, Carys, and Tiarnie.

Enjoy the summer holiday break and we look forward to seeing you all back in September.

DATES:
Break up Thursday 21st July 2005
Return on Monday 12th September 2005
Kelly Buckingham

Pestclear

— Limited —

RATS • MICE • FLEAS • WASPS
COCKROACHES • ANTS • MOLES
INSECTS • WOODWORM etc

Emergency Response - 24 hours - 7 days a week

Telephone: 0800 035 0301

G & K TREE SERVICES

Specialist in all types of Tree Work
inc. Surgery, Felling, Reshaping, Stumpgrinding
Also all hedge Maintenance
Free Estimates Fully Insured
Also Small or Large loads of Logs
Bark, Mulch, Woodchips

Friendly Reliable Service - Open 7 days a week
Tel: 01206 231306 or 07866 251221



P.J. SAMPSON

BUILDERS
COMPLETE BUILDING SERVICE
Over 17 Years' Experience

Free Estimates Tel: 01206 230619

Visual Computing Services Ltd

Professional Web Design & Marketing,
Content Management & e-Commerce

Not yet got an internet presence for your business? We will happily create a professional, attractive website for you... which will be found easily in the search engines!
We are very competitive, so get it done properly by us and be certain your site is working its hardest for you.

Reference sites:

Larger: www.kentblaxill.co.uk
Medium: www.jacksons-insurance.co.uk
Smaller: www.essential-chiropractic.co.uk

Contact: Hugh Frostick PhD
41 All Saints Avenue, Colchester CO3 4NZ
Phone: 01206 509570 E-mail: hugh@vcsnet.co.uk

Established 1995 with many years of experience www.vcsnet.co.uk

S P CONTRACTS

GENERAL BUILDER & HARD LANDSCAPER

TEL: 01206 231866 (Eves)

MOBILE: 07976 264162

Specialists in ground work, drainage, general building & home improvement

with over 20 years' experience examples of the services we offer are:

Patios - slab or block paving, shed/greenhouse bases and building erection, garden walls and fencing, paths, driveways and general drainage including guttering.

Conservatories, porches, extensions and garage conversions

Internal renovation: moving doors or windows, bricking up or recovering fireplaces, levelling floors or putting in ramps.

We are honest and reliable, friendly and affordable.

We give free estimates and have Product & Public Liability Insurance

CURTAINS - CUSHIONS - ROMAN BLINDS & ALTERATIONS

MADE TO MEASURE at REASONABLE PRICES

Please contact: Alison Everington
01206 230956



Photographs fading away?

Old Photographs deteriorate over time and can be completely lost along with your family's memories and history.

We copy and digitally restore old photographs. Call us for prices and free advice.

01206 393888

Unit 3B, Riverside Ave West, Lawford, Manningtree, CO11 1UN
e-mail: info@thephotographicworkshop.co.uk

THROUGH THE YEARS WITH TENDRING ARCHIVERS

Tracing one's ancestors is becoming an ever more popular activity. However, getting started and then continuing on the generation trail may seem a daunting prospect. Not so, as it is now possible to do a lot of the groundwork from your own home, especially if you have a PC with an internet connection. What can make it even more possible - and productive - is that an 'ancestry specialist' will visit you in your own home and explain the basics, as well as unraveling some of the mysteries of the process. Within a few hours you could be unravelling your family history, or the history of your house and traveling back through the years. This will be an expensive process you may

immediately assume. However, that is not the case as the service has been made possible with the aid of a Rural Area Development grant, to both promote an interest in Tendring's rural way of life and foster the care and creation of family history and its archives. The project, entitled *Tendring Archivers*, is operated by well known Harwich historian and author Brian Woods, who will be delighted to visit you and start your family search, or assess your documents and other archives.

You can contact Tendring Archivers on 01255 508629 or by email on: harwichman2003@yahoo.co.uk Incidentally for anyone not having a home computer, do not despair, as the same arrangements can be made via a visit to Harwich Library. *Tendring Archivers* will be happy to make all the arrangements.

HISKEYS FARM KENNELS

Boarding Kennels and Cattery
Open 8am to 8pm - 7 days a week
Quality care for your Dogs, Cats and Small Pets
Playtimes & Country walks for dogs - Cuddles for cats

Competitive rates - Inspection invited
GROOMING PARLOUR - WASH & BRUSH
Tel: Anne, Pete or Stuart on 01206 395657
Spratts Lane, Little Bromley, Essex CO11 2PR

Extra help with maths

EFL and other subjects offered by qualified, experienced teachers
GCSE, SATS, 11+ and general school work

Please phone 01206 251691 for details

Special village rates

 Janina Morris BA(Llms)
2 Bentley Rd, Lt Bromley, Manningtree, Essex CO11 2PL

Clarinet and Saxophone Tuition
From Beginners to Advanced

Tel/Fax: 01206 391345
Mobile: 07759 148854
Email: janinamorris@hotmail.com

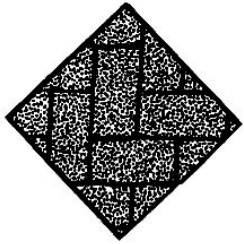


NEED SOMEWHERE TO LIVE? NICE ROOMS TO LET!!

GREAT BROMLEY
PRIVATE HOUSE
FULL USE OF AMENITIES

£65 PER WEEK

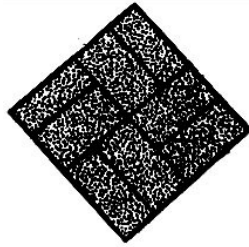
CONTACT: SIMON on 07759 215851



M G. WHITEMAN

Paving Services Ltd

Est. 15 years



“Local, friendly service with quality at affordable prices”

- ◆ Block Paving
- ◆ Patios
- ◆ Ornamental brickwork
- ◆ Natural stone and cobbles
- ◆ Shingled drives
- ◆ Slab laying
- ◆ Tarmac drives
- ◆ Groundwork
- ◆ Dropped kerbs
- ◆ Garden clearance

Driveway refurbishment service available - pressure wash and seal your old driveways/patios to make them look as good as new!

Telephone: (01206) 395449
Mobile: 07860 197275

FREE ESTIMATES

Fully Insured using our own Skilled Tradesmen

Freshfields, Shop Road, Little Bromley, Essex

KITCHEN CORNER

Creamed Fish

A simple recipe that can be prepared in advance and served in various ways. Good for hot weather suppers 500g/1lb white fish fillet (i.e. cod, halibut, plaice etc.), steamed or poached
Sauce: 1 pt milk infused at least 15 mins with 1 bay leaf, 1 sprig each parsley & thyme, piece of carrot, slice of onion, salt and pepper.



Make a sauce in the usual way with the milk, strained, 1½ oz butter, 1½ oz flour.

Add the fish and stir till well broken and make very hot. Serve it on toast, or in vol-au-vents, or place in a greased dish, cover with breadcrumbs or cheese and brown in the oven. I sometimes put a rim of mashed potato round the dish, put the fish in the middle and then bake till brown and very hot, with chopped parsley sprinkled over.
Jill Frostick

JULY GARDENING TIPS



Shrubs: Take semi-hard cuttings of camellia, cistus, ceanothus, hydrangea, pyracantha and skimmia.
Roses: If suckers are growing from the base of the roses scrape away the soil until you find where it is joined to the main stem then wrench it off. Do not cut it off or it will grow again.
Chrysanthemums: For large blooms reduce stems to six or eight. Begin disbudding.
Annuals: Remove faded flowers to encourage new flowers to form.
Irises: All bearded irises can be divided this month, water well after replanting.
Frank Griffiths

ROTARY COLLECTION OF OLD COINS

The response from you has been very good and five parishioners have given me bags of money. Rotary can get up to 80% of the face value which will be donated to the Little Haven Hospice. Our last collection, which includes other villages, made just over £100.



If you have old money, boxes of coins, or notes (foreign or British) no longer in circulation, let me know and I will collect.
Len Christodoulides

FROM THE PAST ...

A RASCALLY POWERFUL BROMLEY KNIGHT

The Great Clacton Parish Register contains the following note:
“I doe allowe of Mr Joseph Longe to have the custodie of this Register Booke, whoe is chosen by the Inhabitants of Great Clacton to be the Register of the said parish. Signed Tho Bowes”



Thomas Bowes lived at Great Bromley. He was a knight of the Shire, a Justice of the Peace, and in conjunction with Sir Harbottle Grimston, had much power in the area and specialised in harassing the poor and needy, especially the so called 17th century “witches”. Joseph Long, Vicar of Great Clacton from 1639 to the time of the Commonwealth was deprived of his living and to his disgrace then aided and abetted these two rascally knights and informed on the defenceless “witches”. Powerful Bowes illegally appointed Joseph Long to be Register keeper. The incumbent was and is the proper custodian. There are many tales to be told about Sir Thomas, Knight, Justice of the Peace, etc.
John Appleby

LAWN MOWER

Servicing and Repairs

All types of Petrol and Diesel Mowers

As well as all other garden equipment and machinery

FREE COLLECTION AND DELIVERY

Very good Competitive Rates

For further information
call Paul Streete
07779 221163
01206 826734



The MOBILE CARPET & FLOOR COVERING SHOWROOM

Tel: 01256 830793
Mobile: 07711 745107

Chiltern Farm • Crown Lane
Tendring • Essex CO16 0BH

The Carpet Store that comes to your door

QUALITY CARPETS, VINYL & LAMINATED FLOORING

Choose from over 2,000 carpet and flooring samples in the comfort of your own home.

We will provide you with:

- ◆ Expert free fitting;
- ◆ Free estimates;
- ◆ Free insurance quotes;
- ◆ Furniture removing for those who can't manage
- ◆ Prompt friendly services;

Daytime or evening appointments available - Distance no object

GREENACRE BOARDING CATTERY

Over 30 years' experience

CARRINGTON ROAD, GREAT BROMLEY
COLCHESTER (01206) 230436
www.greenacrecattery.co.uk

Leave your cat in experienced capable caring hands at this long established cattery which is open all year

We offer:

- * Heated accommodation
- * Home comforts
- * Grooming during boarding
- * Individual diets readily available



GREAT BROMLEY VILLAGE HALL CHARITY TRUSTEES

The Village Hall Management Committee met on Tuesday, 24th May at 7.30pm in the Hall.

The Great Bromley Village site is being set up on the World Wide Web and as part of that the Village Hall will have pages.

Other village organisations will also be featured. Contact Martin Frostick to find out more or to submit your organisation's information for inclusion in the project (01206 250263).

We are very grateful to Richard and Brenda at The Cross Inn, Gt Bromley for organising and running a charity quiz night in May for the benefit of the Village Hall; a splendid £147.50 was raised which we appreciate very much. This is only one example of many charity events run by them for the benefit of organisations in the local area. Thank you very much, we are proud of you.

The committee reviewed the Hire Charges for the forthcoming period, 1st September 2005 through to 31st August, 2006, and decided to leave the current rates in place for a further year without change. This is good news and allows our regular and occasional users to plan their finances accordingly.

We hope to see you and your friends at our coffee morning with light lunches in the garden of the chairman and June's home, The Pippins, Waterhouse Lane (Lawford Road), Burnt Heath, Ardleigh on Saturday, 2nd July from 10.30am till 2.00pm. Bric-a-brac, tombola, cake vegetable, raffle and other similar stalls together with some games will be there or just chat over tea or coffee and eats, all

that before (and after) a light lunch in a very nice garden setting. Come along, bring and see your friends whilst spending a little cash to help the village hall along, ensuring it is there for a little while longer.

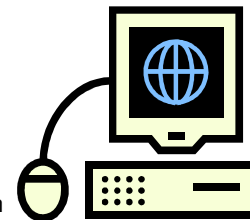
Admission 50p at the gate or in advance.

Our Christmas Fayre will be on Saturday, 19th November and will run from 11.00am till 2.00pm, offering light lunches as well as those items normally for sale. This year the funds raised will be shared between the village hall and the

church. Please note the date in your diary.

The committee will meet again on 12th July at 7.30pm at the village hall.

Bevan Willgress




LPG

Crosby O'Brien

Plumbing & Heating Ltd

Peartree Farm, Spring Lane,
Hatfield Peverel,
Essex CM3 2JW

t: 01245 381616 f: 01245 382636
e: sales@cobs-heating.co.uk


197393

Crosby O'Brien are a Corgi registered company with over 30 years' Experience in all aspects of Heating and Plumbing

- Central Heating
- Boiler Installations
- Bathroom Plumbing and Furnishing
- Including Flooring and Disabled Modification
- We have particular expertise when working with either mains or bottled gas

EASTERN WASTE DISPOSAL

"Local Company Looking
After Local People"



2 cu.yd - 14 cu.yd



15 cu.yd - 40 cu.yd



Aggregates
Delivered

"SUPER CHIP" NOW AVAILABLE!

Clean recycled wood. Ideal for pets, gardens or domestic fires

Tel: 01206 30 70 70

Fully Licenced Waste Transfer Station

info@ewdmail.co.uk

www.easternwastedisposal.com



WOMEN'S INSTITUTE

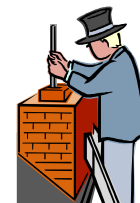
Dr Jane Pearson, who was the speaker at our 'Open Evening' last month, gave us a very interesting talk entitled 'Suffer the Little Children'. Having done a great deal of research into the subject, she told us of the very hard lives the young unmarried mothers and babies had in the 18th century.

There was a workhouse in most areas which took in the girls. After the babies were born, their mothers were expected to find work but their babies could only stay until they were about five years old. After that some were put to work in factories, coal mines and as chimney sweeps. When they reached 14, some were apprenticed to various trades and also employed on farms where they were often treated like slaves. If they were lucky, the mother and baby were taken into "the big house", however this was very unusual. We all felt glad to have been born when we were in the last century.

Mrs Susan Orriss went to the Royal Albert Hall on Wednesday, 8th June as our delegate to the National Federation of Women's Institutes Annual General Meeting. The two Public Affairs Resolutions mentioned in last month's *Bromley Messenger*, Farmgate Milk Prices and Care of the Environment, were both passed with large majorities.

On Wednesday, 6th July, Mrs Susan Orriss is kindly opening her garden at The Chase, Chase Road East, Great Bromley for us to have a Garden Party starting at 7.30pm instead of our meeting at the Village Hall). Notwithstanding leaves on the line, over running maintenance or wrong kind of snow, Sue's husband, Ian, will be running the garden railway. Husbands, sons, boyfriends, or anyone interested are welcome to join him..

June Willgress



FRIENDSHIP CLUB



We were entertained last month by Ian Rose who brought slides showing us his trip to Alaska watching the bears which he and his party encountered at

close quarters frantically trying to catch the salmon as they swim upstream to breed.

Our next meeting is on 21st July. The competition will be given out then.

Vicky Griffiths



SCALLY WAGS

0-5YRS
FRIDAY MORNINGS
9.30AM-11.30AM
GREAT BROMLEY VILLAGE HALL

Contact TRACEY on 01206 230625 or
KELLY on 07796447361

Forthcoming Events



JULY

- 2 Coffee morning with light lunches, Pippins, Burnt Heath, from 10.30am
BBQ, The Rectory, 5.00pm
- 12 Gt Bromley Village Hall Committee meeting, Village Hall, 7.30pm
- 14 Gt Bromley Parish Council meeting, Village Hall, 7.30pm
- 16 Little Bromley Fete, The Old Rectory, Lt Bromley, 12 noon
Strawberry Tea, Chaffinch Gardens, Colchester, 3.00pm
WI Garden Party, The Chase, Gt Bromley, 7.30pm
- 17 Family Fun Day, St George's School, 2.00pm
- 21 Friendship Club meeting, Village Hall, 2.00pm

AUGUST

- 4 Lt Bromley Parish Council meeting, ring Clerk for venue, 7.30pm
- 29 Picnic at Mistley Lodge, 12 noon

SEPTEMBER

- 10 Sponsored Cycle Ride
- 23 Harvest Barn Dance, Ardleigh Village Hall, 7.30pm
- 24 25 Dedham Fun Run 2005

OCTOBER

- 2 Harvest Lunch, Gt Bromley Village Hall, 1.00pm
- 22 Battle of Trafalgar celebrations followed by fireworks, The Cross Inn

NOVEMBER

- 13 Remembrance Sunday
- 19 Christmas Fayre, Village Hall, 11.00am

Brightlingsea Point Clear & East Mersea Ferry

Timetable 2005

Linking Brightlingsea to Point Clear/St Osyth & East Mersea/Cudmore Gove

The ferry will operate from 10-12.30 and 13.30-17.30 each day. The service between Brightlingsea and Point Clear will be continuous on demand during the above times except as follows:

- at times of High Water the ferry will not be in service for 1 hour (normally ½ hour either side of actual high water - see daily notices).

- the service to East Mersea Stone will be operated at 11.00, 13:30 and 16:00. The journey time is approximately 15 minutes each way and the ferry will return to Brightlingsea as soon as all passengers from East Mersea are embarked.

Seasonal Programme

11th June - 4th
September
Daily
10th September - 2nd
October
Saturday & Sunday

LITTLE BROMLEY FETE

To be held at
The Old Rectory
Church Road, Little Bromley
on Saturday, 16th July
12 noon to 3.00pm

Entry fee/ticket
holders
entitled to free
Barbeque Meal
and glass of
wine/soft drink

£4.00 adults
£2.50 children
under 12



Should you have any items you wish
to donate or require tickets
Please telephone 01206 392216

COFFEE MORNING with light lunches

Saturday, 2nd July
10.30am till 2.00pm

In the garden of
The Pippins, Burnt
Heath

- Bric-a-brac
- Tombola
- Cakes
- Vegetables
- Raffle - etc.
- Games



Admission 50p at the gate or in
advance

CLASSIFIED ADVERTISEMENTS

Mahogany "Gilbert of London"
upright Piano exec. con. £380 Buyer
collects. 01206 391635

ST GEORGE'S P.T.A.

Sunday, 17th July
FAMILY FUN DAY
at St George's School
from 2.00pm

- Family games
- bouncy castle
- raffle and stalls



Come along and have a fun
day out.

Dedham Run 2005

25 September
11.00am start
Dedham Playing Fields



10k Race (measured) & 2.2m
Fun Run
Individual & Team categories
Entry forms and more details available
from www.dedhamrun.co.uk or contact
Glenys on 01206 322358
All proceeds to Dedham Primary School