

# ST. GEORGE THE MARTYR, GREAT BROMLEY

united with St. Mary the Virgin, Ardleigh



## Services for August

1st	9.00am	The Eucharist	<i>St. Mary the Virgin</i>
3rd	6.00pm	The Eucharist	<i>Hamilton Lodge</i>
4th		<b>S John Vianney</b>	
	7.00pm	The Eucharist	<i>St. Mary the Virgin</i>
5th	11.00am	The Eucharist	<i>Seven Rivers</i>
6th		<b>Feast of the Transfiguration</b>	
	9.00am	The Eucharist & Rosary	<i>St. Mary the Virgin</i>
<b>Sunday 7th</b>		<b>Trinity 11</b>	
	7.30am	Morning Prayer	<i>St. Mary the Virgin</i>
	8.00am	The Eucharist	<i>St. Mary the Virgin</i>
	10.30am	The Parish Eucharist	<i>St. George the Martyr</i>
	6.30pm	Evening Prayer	<i>St. Mary the Virgin</i>
8th		<b>S Dominic</b>	
	9.00am	The Eucharist	<i>St. George the Martyr</i>
11th		<b>S Clare</b>	
	7.00pm	The Eucharist	<i>St. Mary the Virgin</i>
12th	11.00am	Holy Communion	<i>Seven Rivers</i>
13th	9.00am	The Eucharist & Rosary	<i>St. Mary the Virgin</i>
<b>Sunday 14th</b>		<b>The Assumption of Our Lady</b>	
	7.30am	Morning Prayer	<i>St. George the Martyr</i>
	8.00am	The Eucharist	<i>St. George the Martyr</i>
	10.30am	The Parish Eucharist	<i>St. Mary the Virgin</i>
	6.30pm	Evening Prayer	<i>St. George the Martyr</i>
15th	9.00am	The Eucharist	<i>St. Mary the Virgin</i>
17th	7.00pm	The Eucharist	<i>St. George the Martyr</i>
18th		<b>S Helena</b>	
	7.00pm	The Eucharist	<i>St. Mary the Virgin</i>
19th	11.00am	The Eucharist	<i>Seven Rivers</i>
20th	9.00am	The Eucharist & Rosary	<i>St. Mary the Virgin</i>
<b>Sunday 21st</b>		<b>Trinity 13</b>	
	7.30am	Morning Prayer	<i>St. Mary the Virgin</i>
	8.00am	The Eucharist	<i>St. Mary the Virgin</i>
	10.30am	The Parish Eucharist	<i>St. George the Martyr</i>
	6.30pm	Evening Prayer	<i>St. Mary the Virgin</i>
22nd		<b>Our Lady Queen &amp; Mother</b>	
	9.00am	The Eucharist	<i>St. Mary the Virgin</i>
24th		<b>S Barthomew</b>	
	7.00pm	The Eucharist	<i>St. George the Martyr</i>
25th	7.00pm	The Eucharist	<i>St. Mary the Virgin</i>
26th	11.00am	The Eucharist	<i>Seven Rivers</i>
27th		<b>S Monica</b>	
	9.00am	The Eucharist & Rosary	<i>St. Mary the Virgin</i>
<b>Sunday 28th</b>		<b>Trinity 14</b>	
	7.30am	Morning Prayer	<i>St. George the Martyr</i>
	8.00am	The Eucharist	<i>St. George the Martyr</i>
	10.30am	The Parish Eucharist	<i>St. Mary the Virgin</i>
	6.30pm	Evening Prayer	<i>St. George the Martyr</i>
29th		<b>Beheading of John the Baptist</b>	
	12 noon	Pilgrimage Eucharist of Healing & Renewal	<i>Walsingham</i>
31st	7.00pm	The Eucharist	<i>St. George the Martyr</i>

# AUGUST 2005

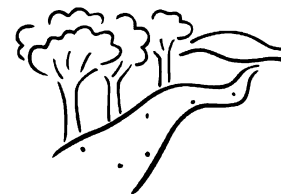
Vol 19 No 5

## WALKING IN AND AROUND THE BROMLEYS

With the school holidays upon us I thought now would be a good time to remind everyone of the benefits of walking.

It is generally accepted by the medical pundits that on average, to keep reasonably fit, every able bodied adult should try and walk ten thousand steps a day which equates to about eight kilometres (or five miles). In my experience this is difficult to achieve today when working! Age is no barrier: I personally know octogenarians who regularly walk up to ten miles in a day and at a reasonable speed. Retired people can make the time much more easily. The main thing is to try and make a habit of it. Prior to retiring a few years ago I would go on occasional walks with a rambling club, but I found that it took me about a year before my muscles became used to walking ten miles once or twice a week.

Fifty years ago when car ownership was very low most people probably walked or cycled to work, to the bus stop or station. Today the car is available so people use it without thinking! Walking on roads has become hazardous because drivers do not seem to expect horses or people on them! Despite all the warnings many drivers seem to think that they can go as fast as their vehicle allows! Speed de-restriction signs are a signal to accelerate regardless of visibility. Most of our lanes do not have pavements or footways, to use the official term, so there is a strong desire by walkers to get off the road as quickly as possible by using some of the public rights of way.



This area is quite fortunate in having around twenty public rights of way, including

two bridleways which can be used in conjunction with lanes to make quite pleasant walks. It is possible to make circular walks of up to 20 miles over to the coast or Dedham Vale if you are really enthusiastic. To plan any walk a map is essential, copyright restrictions prevent reproducing the Ordnance Survey map of the area here, but I recommend the Explorer Map No184 (Colchester) as this shows the position of footpaths more accurately than the Landranger series. The Ordnance Survey website

([www.ordnancesurvey.co.uk](http://www.ordnancesurvey.co.uk)) can be used to view a small area centred on your house simply by entering your postcode. For example, a five mile walk is possible from Church Meadow by walking up Badley Hall Road to use footpaths and Cock Lane up to Little Bromley mast and over to Payne's Lane round by Mulley's Farm across the horse paddock and field to Little Bromley old rectory and back to Badley Hall Road across two fields.

The public rights of way would be in much better shape if they were walked regularly. Although the Highways Authority does organise routine cutting of some paths they are obviously constrained by cost. Landowners are required by law to re-instate cross field paths within fourteen days after cultivation, but the Highways Authority has responsibility for headland (field edge) paths, but generally concentrate on the more popular paths. Any Great Bromley problems should be reported to the parish clerk and he will take the necessary action.

Do contact me if you require assistance with your walking, but meanwhile have a good summer!

Alan Sievewright (Tel: 01206 230791)

# ST. GEORGE'S (C OF E) SCHOOL, GT. BROMLEY

Head teacher: Pat Fitzgerald  
Telephone: 01206 230305

## Ofsted Report

The School recently had its 5 day Ofsted inspection, and the report has just been issued. Copies of the report can be seen at the school, libraries and eventually on the internet with hard copies obtainable from the School at 50p. The School (staff, pupils, parents and governors) was very pleased with the results and the overall evaluation was:-

*"This is a very effective school. Pupils throughout achieve well overall. Standards in English are very good and standards in mathematics, religious education and music are good. Teaching and learning are good, and the pupils behaviour is very good. The Headteacher provides very good leadership. The school gives good value for money."*

The schools main strengths and weaknesses are:

- The strong leadership of the Headteacher ensures a continued commitment to raising standards.
- Teachers cope very well with mixed age classes and match closely to the needs of individual pupils.
- The provision for pupils with special needs is very good.
- Pupils are well behaved and are keen learners.
- The school provides a very good range of enrichment activities.
- Links with parents are very good and there are very high levels of parental satisfaction.
- Need to continue to focus on development of investigative skills in science
- The curriculum is good, but more use of long morning sessions should be reviewed.
- Very good use is made of data analysis to highlight areas of whole school strength and weaknesses.
- The school provides very good levels of pastoral care"

(Above reproduced from the report).

**Many changes** have gone on at the school over the last 2 years culminating with the exciting new and refurbished premises. Government continues to constantly change goal posts with not only standards to be achieved by pupils but with working hours, health and safety, and school dinners to name but three. It is the governors' intention to inform you on a regular basis of some of these activities so that you will all feel that the school is part of your community.

### School dinners

A lot of work has gone on at the school to provide adequate school dinners when the Essex County Council abandoned the provision and made the Governors responsible last year.

Pat Fitzgerald and I have attended more than 15 meetings with various suppliers and other schools in order to procure the best value for money within a very limited number of providers.

We are currently trying to offer healthier meals and at least one dish prepared in-house by the catering staff. On 29th June we opened the hatches to parents to come into the school to try samples of the dishes offered, both hot and cold, including puddings. This was a great success with over 50 parents and as many children sampling the food (and seeking seconds).

In order to maintain the service we have to aim for 50 children eating dinners. We are also looking at the financial implications for improving the kitchen equipment in order to do more in-house meals (the current equipment was installed for chill/cook meals) however this would be dependent upon numbers etc. If you have any questions or seek clarification on any school issues, please contact me

*Len Christodoulides Community Governor*



THE UNITED PARISHES OF ARDLEIGH AND THE BROMLEYS



Dear Parishioner,

When someone is baptised or becomes a Godparent, they are asked a number of questions, the last of which is "Do you renounce evil?" It always strikes me as being rather extreme talking about evil standing in one of our beautiful churches at a celebration of new life and commitment. Then I remember that whatever we do in church must be grounded in the reality of the world and yes, there is evil in our world.

For Christians this is achievable by first "turning to Christ". That is physically, mentally and spiritually turning away from darkness to Christ the light. Jesus is to be a role model, demonstrating that the way to change the world is non-violent self-sacrifice. The cross becomes a power for good, a sign of triumph for God and people.

Seeing our lives in the light of Christ causes the Christian to be sorry for past failings against God, neighbour and self, and resolve to "sin no more". The evil in the world can be triumphed over by the individual using Jesus as an example, and taking responsibility for his or her own actions.

On August 14<sup>th</sup> the C of E celebrates its principal feast of S Mary (10.30am in S Mary's, 6.30pm in S George's). In calling to mind the end of Mary's life we see the hope of all Christians that we will be found worthy to be ushered into God's presence. By turning to Christ, repenting of sins, and renouncing evil, that hope may become a reality.

May God bless you.  
Fr Nicolas.

**Rector:** Fr Nicolas Spicer -01206 230344 [nspicer@lineone.net](mailto:nspicer@lineone.net)

### Churchwardens

**S Mary's** Dr Ulrich Nehmzow 871727  
Mrs Mandy Pratt 230003

**S George's** Mrs Barbara Hall 230673  
Mr James Wild 203679

## THE UNITED PARISHES OF ARDLEIGH AND THE BROMLEYS

The Assumption Our Lady  
14th August 2005

8.00am The Eucharist at St George's

10.30am The Parish Eucharist at St Mary's

Preacher Fr Peter Cobb, Master of the Walsingham Guardians

6.30pm Evening Prayer at St George's with Village Voices and the blessing of the new Statue of "Mary presenting Jesus to the world"



**A. CLARKE**  
**MEMORIALS**  
(Monumental Mason)



*A caring & helpful service to create a memorial to your requirements  
Also additional inscriptions & headstone cleaning service*

**Call for brochure or visit showroom  
Home visits on request**

**Tel: 01206 761167 or 07879650980  
Fax: 01206 541907**

**Unit 12  
Gosbecks Business Park  
Gosbecks Road, Colchester,  
Essex CO2 9JS**

**PLEASE SUPPORT OUR SPONSORS**

## CHURCH NOTES

The PCC met on July 19<sup>th</sup>. The Plant Sale and Flower Festival were held in May. Special thanks goes to Ann Wild for working so hard to ensure both events were enjoyable and well supported. Funds raised will go towards the meeting room and toilet facilities which we hope to install in the church in the not too distant future.

A barbecue was held at Ilex Farm on July 2<sup>nd</sup> which included an Ardleigh vs. Bromley rounders match. Participants' ages ranged from 7 to 70 years and this made it a memorable occasion for all concerned, even though Bromley were not the winners this time!



August 14<sup>th</sup> is the Feast of the Assumption and there will be picnic on the Millennium Green in Ardleigh after the morning Eucharist at St. Mary's. A group entitled 'Village Voices' will sing Evensong in St. George's and during this service the Statue of Mary in the Patron's chapel will be unveiled and blessed. All are welcome to both these events.

Finally, we were delighted to hear that St. George's School had earned an excellent OFSTED report and offered our congratulations to Mrs. Fitzgerald, her staff and pupils.

## THE SNOOTY FOX

Frating Road, Great Bromley  
Telephone: 01206 251065

**EXCELLENT RESTAURANT CUISINE**

**SUNDAY ROASTS • VARIED BAR MEALS • CRACKING WINE LIST**

Also specialising in home made buffets for birthdays, anniversaries, engagements and wedding celebrations

**BEER FESTIVAL**

Friday 19th (evening), Saturday 20th & Sunday 21st August from 11.00am  
12 Local Ales • Music and Bar-B-Q

**HUGE CAR PARK • HUGE GROUNDS IN BEAUTIFUL COUNTRY SETTING**

**EVERYTHING IS HOME COOKED!**

Non Smoking Restaurant Dining Area Available for Smokers in  
Lounge Bar Traditional Inn Setting

*Book Now to Avoid Disappointment*



## GREAT BROMLEY VILLAGE HALL CHARITY TRUSTEES

The Village Hall Management Committee met on 12th July in the Hall. under the chairmanship of Peter Wenden. Nine members were present and three sent their apologies.

It was with some regrets that a resignation letter was received from Mrs Vera Biddis, a long standing member of the committee but who is finding it increasingly difficult to be mobile these days. She and her family have been connected with the village hall ever since it was built back in the 1920s. Always a great stalwart of the hall, her absence from meetings and events will be a great loss to the community although she had indicated her willingness to continue to fund raise whenever the opportunity presents itself. Thank you Vera, you cannot retire yet, we look forward to seeing you at events in the future, all the doors except one have an access ramp provided to help you, something you and the committee added whilst the Millennium Lounge was being built in 2001.



Saturday, 2nd July dawned cloudy and dry but provided us with a splendid day for the Coffee Morning with light lunches gathering at 'The Pippins'. By late morning, the garden was buzzing with supporters engaged in conversation, competing in games, buying raffle tickets and participating of food and drink which kept flowing from June and Peter's kitchen. A really nice relaxed gathering, enjoyed by those present. Did you spot the Sweet Peas growing nearby which were to sweep the board at the Tendring Show? Thank you, Peter and June, a magnificent sum of £651.05 was raised for the village hall.

Several members of our committee enjoyed and supported the Little Bromley Fete on Saturday, 16th July at 'The Old Rectory'. A very nice event with plenty of games and competitions for everyone together with a lovely barbeque meal and drink included in the price of the entry ticket. A fine day in a fine sitting, thank you.

With the Christmas Fayre scheduled for Saturday, 19th November we are also looking at bringing 'Nostalgia' back to the village hall for a dance in March 2006. More details later.

The committee will next meet on Tuesday, 6th September at 7.30pm in the village hall.

*Bevan Willgress*

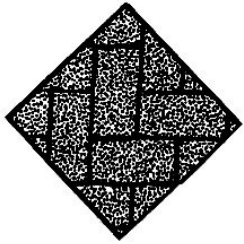
## TEMPORARY ROAD CLOSURE

for essential track maintenance at the Ardleigh level crossing at Ardleigh from 23:30 hours Saturday, 27th August - 08:00 hours Sunday, 28th August.

The road will be closed from its junction with the level crossing for a distance of 20m either side of the crossing gates.

The alternative route will be via B1029 Station Road, A137 Colchester Road, A133, B1029 Station Road and return.





**M G. WHITEMAN**

***Paving Services Ltd***

*Est. 15 years*

*“Local, friendly service with quality at affordable prices”*

- ◆ Block Paving
- ◆ Patios
- ◆ Ornamental brickwork
- ◆ Natural stone and cobbles
- ◆ Shingled drives
- ◆ Slab laying
- ◆ Tarmac drives
- ◆ Groundwork
- ◆ Dropped kerbs
- ◆ Garden clearance

Driveway refurbishment service available - pressure wash and seal your old driveways/patios to make them look as good as new!

**Telephone: (01206) 395449**  
**Mobile: 07860 197275**

**FREE ESTIMATES**

**Fully Insured using our own Skilled Tradesmen**

*Freshfields, Shop Road, Little Bromley, Essex*



**The Dog House**  
Burnt Heath House  
Frating Road  
Ardleigh  
Colchester  
CO7 7SY

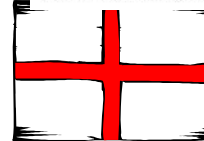
**The Dog House**  
Grooming Service  
Call Jo on:  
01206 230101  
07759 550587

For bathing, clipping and trimming to just brushing out!

**Female Painters & Decorators**

All Interior & Exterior Work  
Soft Furnishings  
10 years experience. Reliable & Tidy  
Free quotations, colour & design advice  
Eco friendly, non-toxic paints available

**Contact: Sara or Anke**  
**Tel: 01206 255226 Mob: 07817 258846**



Brenda and Richard welcome you to

**“THE BROMLEY CROSS INN”**

For fine ales and good food, brought to you in a friendly, welcoming atmosphere and comfortable, homely environment.

**EVENTS during AUGUST**

- Thursday 18th CHARITY QUIZ 8.30pm PROMPT start**  
In aid of **W.A.I.F.S.** Teams of up to 4. £2.50 per head includes light supper. Please book your tables.
- Wednesday 24th MUSIC NIGHT 8.15pm start**  
Sing, play or just come along and enjoy an evening of good music and entertaining recital.
- Thursday 25th POST OFFICE 1ST ANNIVERSARY 10.00am-12 noon**  
You are invited to take coffee and cake with your hosts, Dinah and Richard, to celebrate a very successful first year at the Cross Inn when a special appearance by the Singing Postman is expected.
- Sunday 28th CRIB & DOMINOES EVENING 7.30pm prompt start**  
£2.50 per head entry fee (includes light supper). 2p per hole loser's difference. All proceeds to **ACORN VILLAGE**. Please book a.s.a.p.

**ADVANCE NOTICE**

**Saturday, 17th September CHARITY RACE NIGHT** in aid of Barnardo's  
Would you sponsor a race? It costs £20 and there are lots of prizes to be won. This is part of a nationwide effort to raise funds for a charity that does so much to help children in all kinds of need or distress. Please help us to help them.

**Friday, 21st October TRAFALGAR DAY CELEBRATION** to mark the 200th anniversary of Nelson's victory over the French and Spanish.  
Special menu, fireworks, music, Nelson's address, lighting the beacon.

Non-Smoking Restaurant

Open for lunches Wednesday, Thursday and Friday as well as Sundays.  
Last orders 1.45pm. Evening meals Wednesday - Sunday inclusive.

Telephone 01206 230282



**GREAT BROMLEY POST OFFICE at The Cross Inn**

Ardleigh Road, Great Bromley CO7 7TL

Telephone: 01206 231073

Mon/Tues: 9.30am-2.00pm Wed/Thurs/Fri: 10.00am - 2.00pm  
Sat: 9.00am-midday

- Please note that there is now a wide selection of cards and wrapping paper available.
- A dry cleaning service is also available.

**Please ask for details at the counter.**

## YOUNG PEOPLE'S DAY 2005

Thursday 20th October  
10.00am - 2.30 p.m.

at Clacton Leisure Centre

Buffet and refreshments available

Transport to and from the school is provided for free

You are invited to attend Young People's day 2005, which has been organised by young people for young people.

The Tendring Youth Assembly (TYA) with support from Tendring District council has planned the event to find out what you think about the issues below so that they can make sure your voices are heard.

The TYA is a group of 12-19 year olds from the Tendring District who want to make a difference to young people's lives by helping to improve services and facilities in the area so that they meet young people's needs.

### Topics to be covered :

- \* How can the relationship between younger and **older people** be improved?
- \* What **jobs** are available for young people

and how can they find out about it?

- \* How can **Personal Social and Health Education** be improved?
- \* What **Leisure activities** are there available and what do you want more of?
- \* Do young people need more after-school help with **coursework and homework**?
- \* What are the problems with **public transport** and how can they be solved?
- \* What do you want from your **Tendring Youth Assembly**?
- \* How can the **Tendring Virtual Youth Centre website** ([www.tvyc.com](http://www.tvyc.com)) be improved?

**For further information** on Young People's Day contact Joanne Bellamy Community Projects Officer, Tendring District Council at Tel: 01255 686354, Fax: 01255 831291, email: [jbellamy@tendringdc.gov.uk](mailto:jbellamy@tendringdc.gov.uk) or write to: Tendring Youth Assembly, c/o TDC, Thorpe Rd, Weeley, Essex CO16 9AJ. For more information on the TYA visit [www.tvyc.com](http://www.tvyc.com)

For all your gas requirements ...

## CROSBY O'BRIEN

PLUMBING AND HEATING

### BOTTLED GAS AVAILABLE

ALL CYLINDER SIZES AVAILABLE • EFFICIENT DELIVERY SERVICE  
COMPETITIVE PRICES • CORGI REGISTERED LPG GAS ENGINEERS  
LEADING BOTTLED GAS (LPG) SUPPLIERS AND INSTALLERS

*We can supply you with your bottled gas refills as well as install and service your appliances for:-*

**Industrial:** Units • Farming / Factory • Commercial Catering • Mobile Catering Units  
**Domestic:** Cooking & Heating • Outdoor Leisure • Mobile Homes  
Caravans • Boats • Thames Barges

*We can also carry out Gas Safety Checks for Landlord Certificates and should you require appliances such as:*

Cookers • Heaters • BBQs • Gas Hoses and Fitting • Regulators  
Change Over Valves • Leisure Equipment  
all this and more ...

Tel: 01206 230367 or Tel: 01245 381616



## LETTERS

### Dog Fouling

It is becoming increasingly unpleasant to walk down Back Lane East because of the thoughtlessness of a minority of dog owners. The verges of the lane and the entrances to the two meadows are littered with dog excrement and it is beginning to smell very unpleasant in this area. May I suggest that your dog is kept on a lead until he has done his business, allowing you to clean up behind him, before he goes off to enjoy his run about in the meadows! There is no excuse then to say you didn't see him do it! The bin at the end of Back Lane East was put there for dog excrement - USE IT. How would you like it if dog walkers came from other areas of Bromley and let their dogs foul up your road? Be more considerate - PLEASE.

*Name and address withheld*



### Re: The Post Office at The Cross Inn

I have recently started selling on eBay. I send packages far and wide. The staff at The Post Office at The Cross Inn, Great Bromley have certainly contributed to my being awarded the prestigious Powerseller status in only my first three months of trading. With boundless patience and good humour they have been able to answer every question or concern about the complexities of global posting I have thrown at them. The staff at this small, rural post office are, in my opinion, the finest ambassadors The Post Office can have and truly deserve national recognition and the highest of praise.

*James Reymond*

## LITTLE BROMLEY PARISH COUNCIL

The next meeting of Little Bromley Parish Council will be held on **Thursday, Thursday 4th August, 2005 at 7.30pm.** For details of venue please ring Parish Clerk.

## FROM THE PAST ...

### LOOK AT THE BRASS

A brass in the South aisle of Great Bromley church is dated 1537 and craves prayers for John Hubbarde's soul; his four wives, Agnes, Alice, Rose and Elizabeth, and his three sons, John William and John Son William appears to be the William Hubbarde whose brass at Little Clacton names him and his three wives, Rose, Jane and Joyce. This William died in 1660.

*John Appleby*

## THANKS

June and I would like to thank everyone who helped, provide and supported the coffee morning held at "The Pippins" on Saturday, 2nd July. A profit of £651 was made towards Village Hall funds. An excellent result. Thank you all very much.

*Peter Wenden*



**Pot Doodles  
Ceramic Painting Parties**



*Ladies nights, birthday parties,  
charity events, craft fairs etc.*

*Guaranteed no mess and lots of fun.*

Apryl Brincklow, Heathdene, Ardleigh Road, Great Bromley, CO7 7TL  
Telephone: 01206 230489  
E-mail: apryl.brincklow@btinternet.com

**Extra help with maths**

EFL and other subjects offered by qualified,  
experienced teachers

GCSE, SATS, 11+ and general school work

Please 'phone 01206 251691 for details

Special village rates

**Sweet Success** HIGH QUALITY CATERING for SPECIAL OCCASIONS

CONTACT:  
LINDA PINHEY  
FORGE COTTAGE  
HALL ROAD  
GT. BROMLEY  
COLCHESTER  
CO7 7TP

WEDDING FUNCTIONS  
PARTIES  
BUSINESS LUNCHEONS  
FUNERALS etc.

Tel: 01206 230126  
Email: lindapinhey@hotmail.com

**HISKEYS FARM KENNELS**

**Boarding Kennels and Cattery**  
**Open 8am to 8pm - 7 days a week**  
*Quality care for your Dogs, Cats and Small Pets*  
*Playtimes & Country walks for dogs - Cuddles for cats*

*Competitive rates - Inspection invited*  
**GROOMING PARLOUR - WASH & BRUSH**  
Tel: Anne, Pete or Stuart on 01206 395657  
Spratts Lane, Little Bromley, Essex CO11 2PR

 **Janina Morris** BA(Hons)  
2 Bentley Rd. Lt Bromley, Manningtree, Essex CO11 2PL

**Clarinet and Saxophone Tuition**  
**From Beginners to Advanced**

Tel/Fax: 01206 391345  
Mobile: 07759 148854  
Email: janinamorris@hotmail.com



**Pleass Thomson  
& Company**  
Solicitors



Rosemary Chambers,  
91-93 Rosemary Road West,  
Clacton-on-Sea,  
Essex CO15 1EP

Tel: (01255)221133  
Fax: (01255) 220055

*Miss Jane Pleass, B.A.*

**NEED SOMEWHERE TO LIVE?  
NICE ROOMS TO LET!!**

GREAT BROMLEY  
PRIVATE HOUSE  
FULL USE OF AMENITIES

£65 PER WEEK

CONTACT: SIMON on 07759 215851

**Michael J Byles**  
**Plumbing & Heating**

Specialist in Oil Boiler  
Installations, Maintenance  
& Servicing - Oftec registered

General Plumbing & Heating work also undertaken

Tel: 01206 822225  
Mobile: 07717 012433  
Email@ michaeljbyles@aol.com

**UK ALARM SYSTEMS**

INTRUDER ALARMS  
CCTV  
SECURITY LIGHTING

call 01206 251857  
07835982666

**TENDRING DISTRICT COUNCIL**

**Loft & Cavity Wall Insulation  
Grants for Everyone!**

The Council's Affordable Warmth Strategy sets out various actions to encourage the provision of energy efficiency measures in residential accommodation. The Council is working in partnership with the Essex Energy Efficiency Advice Centre ( a not-for-profit organisation funded by the Department of the Environment, Food & Rural Affairs) who are running the scheme.

**Cavity Wall Insulation**

Type of Home	Standard Cost	Affordable Energy Price
Flats, Semis and terraced with electric or solid fuel heating (based on 85m <sup>2</sup> )	<del>£350.00</del>	£45.00
Flats, Semis and terraced with other types of heating (based on 85m <sup>2</sup> )	<del>£350.00</del>	£170.00
Detached homes with electric or solid fuel heating (based on 120m <sup>2</sup> )	<del>£450.00</del>	£70.00
Detached homes with other types of heating (based on 120m <sup>2</sup> )	<del>£450.00</del>	£170.00

**Loft Insulation**

Type of Home	Standard Cost	Affordable Energy Price
Flats, Semis and terraced with electric or solid fuel heating (based on 50m <sup>2</sup> )	<del>£320.00</del>	£40.00
Flats, Semis and terraced with other types of heating (based on 50m <sup>2</sup> )	<del>£320.00</del>	£120.00
Detached homes with electric or solid fuel heating (based on 80m <sup>2</sup> )	<del>£320.00</del>	£90.00
Detached homes with other types of heating (based on 80m <sup>2</sup> )	<del>£320.00</del>	£190.00

Loft Insulation Price includes the cost to insulate 2 tanks and up to 15m of pipe work)

0800 096 6356

[www.affordableenergy.co.uk](http://www.affordableenergy.co.uk)

The above grants are available regardless of income - however if you are on a benefit you may be able to have the work completed FREE of charge - call our trained advisors now

**CLAIM YOUR 2 FREE LOW ENERGY LAMPS**

You can claim 2 FREE low energy lamps (worth £10) simply complete the home energy questionnaire and take completed form Tendring District Town Hall, Station Road, Clacton on Sea or Tendring District Council Offices, Weeley.  
Council Office opening times are Monday-Friday 9am-4pm

**DELIA'S WAY**

TELEVISION chef Delia Smith is well-known in the UK for her innovative recipes. But it seems that real women may do things differently. Here are some examples:  
**Delia's way:** To keep potatoes from budding, place an apple in the bag with the potatoes.

**Real woman's way:** Buy Smash and keep it in the cupboard for up to a year

**Delia:** When a cake recipe calls for flouring the baking tin, use a bit of the dry cake mix instead, and there won't be any white mess on the outside of the cake.

**Real woman:** Tesco sells cakes. It even does decorated versions.

# EASTERN WASTE DISPOSAL

"Local Company Looking  
After Local People"



2 cu.yd - 14 cu.yd

15 cu.yd - 40 cu.yd



Aggregates  
Delivered

**"SUPER CHIP" NOW AVAILABLE!**

Clean recycled wood. Ideal for pets, gardens or domestic fires

**Tel: 01206 30 70 70**

Fully Licenced Waste Transfer Station

info@ewdmail.co.uk

www.easternwastedisposal.com

## GREAT BROMLEY & FRATING PLAYGROUP



Mondays Wednesdays &  
Thursdays 9.30am-12  
Midday

£5.00 per session 2 yrs 6mths to 5yrs  
at Great Bromley Village Hall.  
Contact 07712961940 and ask for a  
member of staff



## SCALLY WAGS

0-5YRS  
FRIDAY MORNINGS  
9.30AM-11.30AM  
GREAT BROMLEY VILLAGE HALL

Contact TRACEY on 01206 230625 or  
KELLY on 07796447361

## KITCHEN CORNER

### Chocolate Banana Cookies

This is a Fairtrade recipe from the WI magazine. Easy and quick and popular with the children. They would enjoy making these themselves. If you can buy all the ingredients with a "Fairtrade" mark, you will be helping farmers and producers in developing countries to get a fair return for their labours. That is the added "feel good" factor as well as enjoying the cookies!

250g/9 oz softened butter  
150g/5 oz soft dark brown  
sugar  
100g/3½ oz granulated sugar  
2 eggs  
1 teasp vanilla essence  
2 bananas, peeled and mashed  
350g/12 oz plain flour sifted  
with

1 tsp bicarb of soda  
115g/4 oz Fairtrade chocolate (milk or plain)  
broken up into small pieces

Cream butter and sugar till light and fluffy,  
beat in eggs, essence and stir in mashed

banana.

Fold in flour and bicarbonate of soda, mixing thoroughly, stir in chocolate  
Drop large teaspoonfuls of mixture on to well-greased baking sheets, leaving space for  
spreading. Bake 15-20 minutes till golden brown 190°C (fan oven 170°C) Gas Mk 5.  
Leave on sheets a few minutes before transferring to cooling racks. Keep 2 weeks in  
airtight container.

Jill Frostick

## FROM THE DOCTORS' SURGERIES

### ARDLEIGH SURGERY THE SURGERY, DEDHAM ROAD ARDLEIGH [www.ardleighsurgery.nhs.uk](http://www.ardleighsurgery.nhs.uk)

#### Medication name changes

We have been asked by a patient to explain our policy regarding the supply of medication from our Dispensary.

We use two main drugs wholesalers. We try to use the same suppliers for various drugs particularly generics to try and avoid the problems of a different packaging and

colour of tablets. However, one of our suppliers does source some of the generic drugs from a range of manufacturers which may cause patients some confusion.

However, the name of the drug and dosage will always be shown clearly on the box and the active ingredients of the drug itself will be identical. Manufacturers of brands will also sometimes change their packaging. If we switch from a brand to a generic when a drug comes off patent or we move from one brand to another, then we will always try to enclose a slip with the medication to explain the change to patients. If patients have any queries about their medication, please do not hesitate to speak to our dispensary staff, Jeane or Caroline.

Patients who have to use a pharmacy rather than our dispensary, because they reside within a mile of a pharmacy, may find that the packaging of their medication changes more often. This is because some pharmacists use a wider range of suppliers.

#### Repeat prescribing

As patients are aware we have a range of options for ordering repeat prescriptions, by using the direct telephone number 01206 23702 between the hours of 10.00 am – 1.00 pm and 2.00 pm – 4.00 pm Monday to Friday giving 48 hours notice. This will free the main surgery number 01206 230224 for

appointments, queries and results.

Alternatively you can order your repeat prescription by post, by fax on 01206 231602, on the practice website [www.ardleighsurgery.nhs.uk](http://www.ardleighsurgery.nhs.uk) or drop in the right hand side of the prescription form to the surgery.

Patients whom have their prescriptions dispensed at a pharmacy may request their prescriptions to be sent to or collected by a pharmacy. There are weekly deadlines and patients need to make it clear to the receptionist each time they telephone that they wish their prescription to go to a nominated pharmacy either in Dedham or Manningtree. Alternatively, patients may request for their prescription form to be posted to them by enclosing a stamped addressed envelope.

Please do not request any medication as repeats that you do not require. If a particular drug is not agreeing with you, do not be worried about telling your GP or Nurse, rather than continue ordering and stockpiling it. You can return all unwanted medicines to the surgery or pharmacy for safe disposal.

#### Caroline James qualifies as a Pharmacy Technician

We are pleased to report that one of Dispensers, Caroline James, has completed a two year course at Chelmsford College and has obtained the National Certificate in Pharmaceutical Services with distinction. The course is of a high academic standard and required a high level of commitment in attending college once a week and undertaking many written assignments in pharmaceuticals, actions and uses of drugs, microbiology, chemistry, human physiology and pharmacy law. Our other Dispenser, Jeane Ball undertook a BTEC course for dispensers at Colchester College in 1995.

*Fred Merrin, Practice Manager*

## PARISH COUNCIL NEWS

### GREAT BROMLEY PARISH COUNCIL

#### Report of the Great Bromley Parish Council meeting held on 14 July 2005 Planning

*The Council considered and agreed no objections to the following planning applications:*

**Pondfields, Rectory Road** - 'Granny' annexe

**Land at Mill Lane, Ardleigh** – sewage pumping station, access road and site fencing

**The Walnut, Chapel Lane** – renewal of permission for mobile home

**Fryerning, Hall Road** – single storey front and rear extensions

**Marks Farm, Frating Road** – glazed infill extension

**Roseland, Colchester Road** – garage and loft store

**The Laurels, Chase Road East** – two storey extension

**Bay Trees, Parsons Hill** – two storey side extension

**Veranda Cottage, Harwich Road** – new house and garage

*Tendring District Council has approved the following planning applications:*

**Hilliards Farm, Hilliards Road** – entrance hall/garden room/annexe

**Drumnascamph, Chase Road West** – conservatory.

#### Hare Green recreation ground

The children's play equipment at the ground has been inspected by the Royal Society for the Prevention of Accidents and found to be largely satisfactory. The council will undertake remedial work to ensure that the equipment etc meets national safety standards. The council is planning to purchase further equipment for the hard surface playing area and the village's young people will be consulted as to what is required.

#### Highways

Following representations by the council the Highways Agency is reviewing its proposal to prohibit A120 traffic from turning right into and out of Park Road. The building of a roundabout on the A120 at its junction with Harwich Road has also been put on hold. The B1029 bridge crossing the A120 also appears to have been damaged again .... The council continues to be concerned with speeding in the 30 and 40 mph zones. A speed survey in the 40 mph section of Ardleigh Road will be requested with a view to reducing the limit further to 30 mph.

#### Sewage

Anglian Water is going ahead with installing a public sewer in the Bromley Cross/Burnt Heath area with a pumping station at Mill Lane. The output will be treated at the Great Bromley works, which Anglian Water states will be working within its capacity. The work will be completed by March 2007.

#### Motorcycle racing track

The district council has reported that the landowner does not propose further motorcycle racing events while he is in breach of planning control. The parish council and district councillors will however continue to monitor the situation closely.

#### Tendring District revised local plan

The council understands that Tendring District Council will be considering and finalising the new local plan on 19 September 2005. The meeting will take place at the Town Hall Clacton starting at 7.30 pm. Assuming that the meeting is not in closed-session members of the public may be interested in attending to see how the District Council has responded to the many objections to the draft plan. The final plan will then be published this autumn when the public will again be invited again to comment before it is subject to a public enquiry.

#### Future meetings

The next meeting of the Council will be at 7.30 pm on Thursday 11 August 2005 at the Village Hall, Great Bromley.



# Pestclear

— Limited —

RATS • MICE • FLEAS • WASPS  
COCKROACHES • ANTS • MOLES  
INSECTS • WOODWORM etc

Emergency Response - 24 hours - 7 days a week

Telephone: 0800 035 0301

## G & K TREE SERVICES

Specialist in all types of Tree Work  
inc. Surgery, Felling, Reshaping, Stumpgrinding  
Also all hedge Maintenance  
Free Estimates Fully insured  
Also Small or Large loads of Logs  
Bark, Mulch, Woodchips

Friendly Reliable Service - Open 7 days a week  
Tel: 01206 231306 or 07866 251221



**P.J.  
SAMPSON**

**BUILDERS**  
**COMPLETE BUILDING SERVICE**  
Over 17 Years' Experience

Free Estimates Tel: 01206 230619

Visual Computing Services Ltd

Professional Web Design & Marketing,  
Content Management & e-Commerce

Not yet got an internet presence for your business? We will happily create a professional, attractive website for you... which will be found easily in the search engines! We are very competitive, so get it done properly by us and be certain your site is working its hardest for you.

Reference sites:

Larger: [www.kentblaxill.co.uk](http://www.kentblaxill.co.uk)

Medium: [www.jacksons-insurance.co.uk](http://www.jacksons-insurance.co.uk)

Smaller: [www.essential-chiropractic.co.uk](http://www.essential-chiropractic.co.uk)

Contact: Hugh Frostick PhD

41 All Saints Avenue, Colchester CO3 4NZ

Phone: 01206 509570 E-mail: [hugh@vcsnet.co.uk](mailto:hugh@vcsnet.co.uk)

Established 1995 with many years of experience [www.vcsnet.co.uk](http://www.vcsnet.co.uk)

16

## S P CONTRACTS

GENERAL BUILDER & HARD LANDSCAPER

TEL: 01206 231866 (Eves)

MOBILE: 07976 264162

**Specialists in ground work, drainage, general building & home improvement**

with over 20 years' experience examples of the services we offer are:

*Patios - slab or block paving, shed/greenhouse bases and building erection, garden walls and fencing, paths, driveways and general drainage including guttering.*

*Conservatories, porches, extensions and garage conversions*

*Internal renovation: moving doors or windows, bricking up or recovering fireplaces, levelling floors or putting in ramps.*

*We are honest and reliable, friendly and affordable.*

*We give free estimates and have Product & Public Liability Insurance*

**CURTAINS - CUSHIONS -  
ROMAN BLINDS  
& ALTERATIONS**

**MADE TO MEASURE at REASONABLE  
PRICES**

Please contact: Alison Everington  
01206 230956



**Photographs fading away?**

Old Photographs deteriorate over time and can be completely lost along with your family's memories and history.

We copy and digitally restore old photographs. Call us for prices and free advice.

01206 393888

Unit 3B, Riverside Ave West, Lawford,  
Manningtree, CO11 1UN

e-mail: [info@thephotographicworkshop.co.uk](mailto:info@thephotographicworkshop.co.uk)

## GREAT BENTLEY SURGERY

THE HOLLIES, THE GREEN  
GREAT BENTLEY

In a rash moment, and without consulting him, I promised last month to let you know how Dr Hunt got on in the Tornado World Championships. As it turns out, I'm sure that he will be perfectly happy for me to "leak" his results, which I reckon were really impressive.

He and his sailing partner, John Payne, managed to finish 55th over all which, considering the top forty-plus boats are sailed by professional sportsmen, many of them full-time, is a pretty good result. What's more, they finished 35th in one race, beating several of the professionals in the process, and throughout the championships they never capsized once.

Just to cap it all, a few days after the event the pair of them heard that they had been awarded a world ranking of 95th. To have someone here at the surgery who is ranked 95th in the world at anything, let alone an Olympic sport, makes us all feel pretty proud.

I also promised news of a new doctor here at "The Hollies". She is Dr Jane Slawson, a very experienced GP, who joins us on a part-time basis to work five sessions each week.

Dr Slawson has been a GP since 1990. She was previously a partner at practices in Tiptree and at Holland on Sea, so has acquired plenty of skills that will help take the pressure off the other doctors here. We feel very fortunate to have her with us.

In her spare time, Dr Slawson enjoys reading novels and spending time with her husband at their holiday apartment, which is somewhere sunny and warm. It almost goes without saying that she also loves skiing, which seems to be an essential requirement for all doctors here, but whether she has a



world ranking, I don't know.

I'm sure that many of you will soon get to know Dr Slawson and that everyone will make her feel very welcome.

Next, a call to all parents of small children. The computers at Central Clinic, on which all immunization invitations are produced, are out of action for a while. We are trying quickly to put together our own recall system, but if in the meantime you think that your child might be due to have one of his or her jabs, please don't wait for an invitation. If you ring the surgery (preferably during an afternoon) one of the nurses will be able to check for you.

It's holiday time again, so for a while your favourite doctor might not be available when you want him/her. (Hopefully, this is where Dr Slawson will make a difference.) If you ask for an appointment, the receptionist will be checking with you what it is for so that, if appropriate, we can fit you in with a different doctor, a nurse or even a healthcare assistant. That way we can ensure that you are looked after as soon as possible. If you are uncomfortable telling the receptionist what the problem is, you don't have to of course, but it will help if you can. You might occasionally find over the summer that we are a little short staffed on reception too, so please be patient with us.

Talking of summer, I'm afraid it's time to wheel out the warnings about sunburn and skin cancer again.

The sun has been fantastic over the last few days and long may that continue. However, skin cancer, which can be the result of excessive exposure, is a nasty, painful disease which can kill. Even if it doesn't, it looks horrible and the treatment is very unpleasant. Far better really to use plenty of sun-screen and enjoy the sun without overdoing it. Small children are especially vulnerable of course, and they won't be able to tell you they are burnt until it hurts, so it's worth being cautious.

Enjoy the summer anyway!

*Hugh Cronin, Practice Manager*

# LAWN MOWER

## Servicing and Repairs

All types of Petrol and Diesel Mowers

As well as all other garden equipment and machinery

**FREE COLLECTION AND DELIVERY**

**Very good Competitive Rates**

For further information  
call Paul Streete  
07779 221163  
01206 826734



## The MOBILE CARPET & FLOOR COVERING SHOWROOM

Tel: 01255 830793  
Mobile: 07711 745107

Chiltern Farm • Crown Lane  
Tendring • Essex CO16 0BH

The Carpet Store that comes to your door

**QUALITY CARPETS, VINYL & LAMINATED FLOORING**

*Choose from over 2,000 carpet and flooring samples in the comfort of your own home.*

We will provide you with:

- ◆ Expert free fitting;
- ◆ Free estimates;
- ◆ Free insurance quotes;
- ◆ Furniture removing for those who can't manage
- ◆ Prompt friendly services;

Daytime or evening appointments available - Distance no object

# GREENACRE BOARDING CATTERY

*Over 30 years' experience*

CARRINGTON ROAD, GREAT BROMLEY

COLCHESTER (01206) 230436

[www.greenacrecattery.co.uk](http://www.greenacrecattery.co.uk)

*Leave your cat in experienced capable caring hands at this long established cattery which is open all year*

**We offer:**

- \* Heated accommodation
- \* Home comforts
- \* Grooming during boarding
- \* Individual diets readily available



## AUGUST GARDENING TIPS

**During this hot weather** which you are enjoying, or not, as the case may be, save all your lawn cuttings to mulch your shrubs - water around the base of the plant first then apply the mulch. You can also use well rotted compost or peat.

**ROSES:** now the roses are well into their blooming cycle feed with sulphate of potash

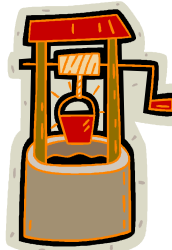
**SHRUBS:** still continue to take cuttings of Hydrangeas to grow on for pot culture

**PERENNIALS:** Now is the time to plant seeds - use a seed tray filled with a finely sieved compost, make sure it is kept damp

- cover with a sheet of newspaper and glass. As soon as the shoots appear and have two strong leaves pot into 3" pots.

**TIMELY TIP:** At the moment we are all asked to use water sparingly so when making tea or coffee, keep a jug or large bottle handy in which to pour the water left in the kettle and use it for your house plants when it has cooled - see how they "perk up" with the soft water.

Frank Griffiths



## GREAT BROMLEY & DISTRICT CRICKET CLUB

### Great Bromley 100 Club Winners

**May**

1st Mr J Wild  
2nd Mr C Allam  
3rd Mr T Biscoe

**June**

1st Mr K Foley  
2nd Mrs M Wright  
3rd Mr J Foley

**July**

1st Mr P Wright  
2nd Mrs B Jenno  
3rd Mrs R Herring

## "OLD COURTHOUSE INN"

Harwich Road • Great Bromley • Colchester

Tel: 01206 250322

[www.theoldcourthouseinn.co.uk](http://www.theoldcourthouseinn.co.uk)

**BED & BREAKFAST • 10 EN-SUITE ROOMS**

Large Bar Restaurant & Bar Menus

**Specialising in Fresh Fish, Steaks, Home-Made Dishes, Vegetarian Dishes**  
**ALL FOOD COOKED FRESH ON PREMISES**

Thursday is Curry Night plus full menu

Sunday we serve a choice of roasts plus the full menu is available

We serve food until 10.00pm every evening

Sunday until 9.30pm

**OPEN ALL DAY**

Breakfast, Morning Coffee, Lunch, Afternoon Cream Teas & Evening Meals

We have our full menu available all day



Four ♦♦♦♦  
Tourist Board  
Recommended  
**BED &  
BREAKFAST**

# SAUKA GROUNDWORKS & PLANT HIRE



FREE ESTIMATES  
ALL TYPES OF GROUNDWORKS &  
LANDSCAPING UNDERTAKEN

PATIOS TARMACING SLABBING CONCRETING  
BLOCK PAVED DRIVEWAYS TURFING FENCING  
GARDEN WALLS FOOTINGS CONSERVATORY BASES  
ESTENSIONS DIGGER & PLANT HIRE

STEPHEN SAUKA  
Dakas House  
Shop Road  
Little Bromley  
Essex CO11 2PX

Tel: 01206 390082/3  
Mobile: 07850 576028



Established 20 years  
in Ipswich  
town centre

## SMITHS VILLAGE HOMES

Have now opened their office at

1, THREAD NEEDLE STREET  
**DEDHAM**

We specialise in the sale of village, country and Equestrian properties

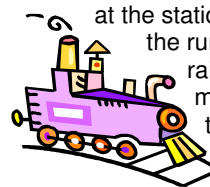
If you're thinking of selling, contact us for a free market appraisal

Tel: 01206 322111



## WOMEN'S INSTITUTE

Mrs Susan Orriss' Garden Party in July was a great success, in spite of the weather threatening rain, it was blessed with a nice fine evening and attended by many members and guests. Whilst the women did their formal business in the decorated barn, the men (boys) joined Ian at the station buffet for a drink and the running of the model railway. With all the maintenance up to date, there were only slight delays due to the occasional derailment which was quickly fixed. No compensation due!



Sue gave us an account of her day as our delegate to the National Federation of Women's Institutes Annual General Meeting at the Royal Albert Hall in June. It was attended by some 7,000 members and she said that the singing of 'Jerusalem' at the beginning was something very moving and memorable. The two Public Affairs Resolutions, Farmgate Milk Prices and Care of the Environment, were both passed with large majorities.

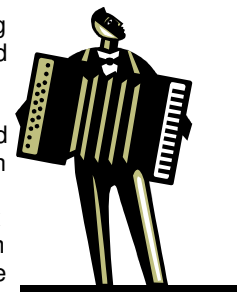
Afterwards we had a parade of our decorated hats and Mrs Jennifer Nicholls won the prize - a very pretty creation with butterflies. We continued with a treasure hunt around Sue and Ian's lovely garden, the first letter of each answer making an anagram of the word *Summertime*. Back to the barn, for all to enjoy refreshments prepared by our committee members. Very nice they were too.

Our August Outing this year is a trip to Aldeburgh followed by a visit to Snape Maltings. We shall meet again at the village hall on the first Wednesday in September.

*June Willgress*

## FRIENDSHIP CLUB

At our June meeting we were entertained by Mr John Robinson with his piano accordion and songs, together with his stories in which he spoke the Essex dialect making them very humorous. We look forward to seeing him again in the future.



The next meeting is on Thursday 19th August at 2.00pm. The competition is a CANDLESTICK HOLDER WITH CANDLE.

*Vicky Griffiths*



LPG Peartree Farm, Spring Lane,  
Hatfield Peverel, 197393  
Essex CM3 2JW  
t: 01206 230367 or 01245 381616  
f: 01245 382636  
e: sales@cobs-heating.co.uk

*Crosby O'Brien are a Corgi registered company with over 30 years' Experience in all aspects of Heating and Plumbing*

- Central Heating
- Boiler Installations
- Bathroom Plumbing and Furnishing
- Including Flooring and Disabled Modification
- We have particular expertise when working with either mains or bottled gas



## Forthcoming Events

### AUGUST

- 4 Lt Bromley Parish Council meeting, ring Clerk for venue, 7.30pm
- 11 Gt Bromley Parish Council meeting, Village Hall, 7.30pm
- 18 Friendship Club meeting, Village Hall, 2.00pm
- 25 Post Office at The Cross Inn 1st Anniversary celebrations, 10.00am
- 29 Picnic at Mistley Lodge, 12 noon

### SEPTEMBER

- 7 WI meeting, Village Hall, 7.30pm
- 6 Village Hall Management Trustees meeting, Village Hall, 7.30pm
- 10 Sponsored Cycle Ride  
Quiz Night, Village Hall, 7.30pm
- 10-11 Lt Bromley Flowers & Music, St Mary's Church, Lt Bromley
- 19 Tendring District Council Local Plan meeting, Town Hall, Clacton, 7.30pm
- 23 Harvest Barn Dance, Ardleigh Village Hall, 7.30pm
- 25 Dedham Fun Run 2005
- 29 WEA - Introduction to Psychology - Ardleigh Village Hall

### OCTOBER

- 2 Harvest Lunch, Gt Bromley Village Hall, 1.00pm
- 21 Battle of Trafalgar celebrations followed by fireworks, The Cross Inn

### NOVEMBER

- 13 Remembrance Sunday
- 19 Christmas Fayre, Village Hall, 11.00am

**MATERIAL** for the **September 2005** edition of 'The Messenger' should reach the Editor, Leonie Henderson, by **MONDAY, 15th August, 2005** please. Contributions from anonymous sources will not be printed.

Copy can either be delivered by hand or sent by post, fax or e-mail. (see inside front cover for details)

Our thanks to **St George's C of E Primary School, Great Bromley** for sponsoring this month's magazine and for printing it every month so efficiently.

**Please support the sponsors of our magazine.**

## WEA ARDLEIGH BRANCH

The autumn term will start on Thursday, 29th September for a 10-week course entitled 'An Introduction to Psychology'

The tutor will be Professor Chris Green, a university lecturer and a Fellow of the Royal Society of Arts and also a well known writer on music. Full details of the course will be published in the September issue of *'The Messenger'*.



## CRESSING TEMPLE CHILDREN'S HISTORY DAYS

Meet our historical characters a join in the craft activities and games

- 4th August - Anglo Saxon
- 11th August - Tudor
- 18th August - Medieval
- 25th August - Vikings
- 1st September - Romans

£3.50 per person

Ring 01376 584453 for details



## CRESSING TEMPLE CHILDREN'S ARCHAEOLOGICAL DIG

New for this year for children to have 'hands on' experience of uncovering ancient finds. The session will involve working on the dig and then in the finds and marking up areas.

Tuesdays in August

Limited spaces

Booking Advised 01376 584453

C.A.R.D.

Campaign against Rural Destruction

## QUIZ NIGHT

Saturday 10th September at 7.30pm

Gt Bromley Village Hall

Teams up to 8 persons

£3 per person

Please bring own refreshments

16 tables can be accommodated

**To book phone 01206 252000**

This is being held as part of an ongoing campaign to raise funds for the legal battle against over-development in the West Tendring area.

Any donations and raffle prizes will be gratefully accepted.

**Please help us to help you.**



## LITTLE BROMLEY FLOWERS AND MUSIC



10-11th September  
at St Mary's Church, Little Bromley.

A weekend of wild and garden flowers, music, and refreshments

Details in September edition of

*'The Messenger'*

and soon on [www.littlebromley.org.uk](http://www.littlebromley.org.uk)

If you would like to help please contact Carol Cordwell 01206 395103

## Dedham Run 2005

25 September

11.00am start

Dedham Playing Fields

10k Race (measured) & 2.2m Fun Run



Individual & Team categories

Entry forms and more details available from

[www.dedhamrun.co.uk](http://www.dedhamrun.co.uk) or contact Glenys on

01206 322358

All proceeds to Dedham Primary School