

# **The Bromley Messenger**

*FEBRUARY 2012*

Volume 26 No 10



*Photograph courtesy of David Beech*

## ***New Year's Eve Party*** **at** ***Great Bromley Village Hall***

Organised by Dinah Jones and Jane Bates with help from their husbands and friends, especially Mrs Bilby and Mrs Randall. The Hall looked great with decorations from the ceiling and wonderful displays on the round tables. The night itself went very well with food by Linda Pinhey and music by Scott.

A terrific night, good food, good company and great value, fun was had by all and we raised £506.00 for the Hall. Well done Dinah and Jane

*Village Hall report on page 4*

# EDITORIAL

Plastic. Rubbish. Litter. The words are synonymous and all conjure up a mental image of ugliness. Before Christmas I went to see Christmas trees decorated to a recycling theme. The ideas were imaginative with all manner of plastic and other materials cut, curled, fashioned, strung together into decorations before being hung on trees. The sight of all these trees decorated with recycled materials was impressive but it wasn't pretty. They tinkled in the wind but it wasn't a pleasant, soothing sound and when all was said and done it was still rubbish, just slightly altered. The photo



shows what I have picked up within a quarter mile of my house over a very short space of time. People go along the road and just chuck it away – what a shame they do not take it home with them for disposal. Thanks then to the Litterpick Working Groups of Little and Great Bromley who get together periodically and litter pick around the villages clearing them up. Litter is also dangerous for wild creatures who can ingest or get caught in it with tragic consequences.

The Working Groups started as a direct result of a village survey masterminded by Martin Frostick. Martin has recently been awarded by Tendring District Council a 'Pride of Tendring' award (see pages 5 and 6) in recognition of his services to the community.

Well done, Martin, and well deserved.

*Leonie Henderson*

**MATERIAL** for the **APRIL 2012** edition of 'The Bromley Messenger' should reach the Editor, Leonie Henderson, by **14th March, 2012** please.

Contributions from anonymous sources will not be printed. Whilst the editor welcomes contributions, photographs etc this is on the understanding that there is no obligation to publish, that the item may be edited and that there is no breach of copyright. Publication is in good faith and neither the editor nor the publisher accept any liability in respect of the content of any article, photo or advertisement, including any error or omission, responsibility for which remains with the author.

Copy can either be delivered by hand, sent by post or e-mail. (see inside back cover for details) or via the link on the websites [www.greatbromley.org.uk](http://www.greatbromley.org.uk) or [www.littlebromley.org.uk](http://www.littlebromley.org.uk)

For details of availability and costs for **ADVERTISING** in the 'The Bromley Messenger' please contact the Treasurer on 01206 230537

***Please support the sponsors of our magazine.***

# GREAT BROMLEY PARISH COUNCIL

[www.gbpc.org.uk](http://www.gbpc.org.uk)

As from 10th January, 2012  
**Mrs Sally Toller**  
took over as the new  
Clerk to Great Bromley Parish Council.

Her address is:  
Parkside Villa  
School Lane  
Mistley  
Manningtree  
Essex CO11 1HN

Telephone No: 01206 393260  
Mobile No: 07949 050534  
Email: [clerk@gbpc.org.uk](mailto:clerk@gbpc.org.uk)

The next **Parish Council meeting** is on  
14th February 2012, at 7:30 pm, Village Hall.

## MOBILE LIBRARY

(January – June 2012)

The county's mobile library will continue to call at the following Great Bromley locations  
on **alternate Wednesdays** at the times noted below

11.15 – 11.30 am	Cross Inn, Burnt Heath
11.40 – 11.55 am	Hamilton Lodge
12.00 – 12.15 pm	Church Meadow
12.20 – 12.35 pm	Great Bromley Village Hall
12.40 – 12.55 pm	Chase Road West, Hare Green

*The visit dates for the first half of 2012 are ...*

4 and 18 January	1, 15 and 29 February	14 and 28 March
11 and 25 April	9 and 23 May	6 and 20 June



**PLEASE SUPPORT OUR SPONSORS**

# VILLAGE HALL TRUSTEES

Happy New Year Again

It has been a long time for a writing break and since I wrote last in mid October quite a lot has happened.



We held the Christmas Fayre on December 3rd which was organised this year by Filipe Farn who did a fantastic job, The whole event raised £677.00 both for the Church and for the Village Hall. Well done! The next event held by the Hall was the Farmers Market on December 15th which was well attended and had a wide selection of wonderful stalls. This event raised £263.00. Well done both Fred Nicholls and



Neil Skinner. The third event in December was the New Year's Eve Party (see report on cover).

The roof has now been insulated with 400mm of insulation everywhere except over the toilets which still needs the pipes

lagging before laying insulation. A big thank you to Martin and Filipe who went to buy the insulation and the insulation fitting team of Fred Nicholls, Martin Frostick, Andy Terry and David Beech who spent a very dirty and itchy Saturday morning installing

## **Future Events to look forward to**

Farmers Market before Easter and possible future events such as A Bingo Night, A Quiz Night, Essex on Tour Cabaret Night, a Murder Mystery Night as well as the usual favourites. More details soon.

Sadly in April the Village Hall Committee will be looking to fill several vacancies. Fred Nicholls is standing down as Chairman, Dean Dasely is standing down as Treasurer, Neil Skinner is standing down as Minutes Secretary and Tracy Griffiths is standing down as Booking Manager. We need to have people to volunteer to help run the Hall. Without the Hall Committee there is no Hall and with no Hall where will people go for WI, Carpet Bowls, Cricket Club, Playgroup etc? On a positive result Jacquie Terry has agreed to stand as minute secretary as from April. Thank you Jacquie.

During February half term the inside of the Hall will be decorated.

With the completion of the guttering the roof is now finished.

When booking the Hall the booking form will now ask if you agree with the Terms and Conditions, instead of sending an eight page document. It will also say that the terms and Conditions can be found on the web site

That's all for now, as always thank you for your support and please put the forth coming event dates in your diary. Let's all make the most of our Village Hall in 2012.

Next Committee meeting Tuesday 6th March at 7:30pm. As always all welcome.

David Beech - [sailspar@me.com](mailto:sailspar@me.com)

## Great Bromley Village Hall Trustees

are responsible for the day to day running of the village hall and to ensure that it continues to serve our community for years to come.

The Hall and surrounding area was given to the people of Great Bromley by the Crossman family early in the 20<sup>th</sup> century. Since 1946 the hall has been administered by trustees and has been regarded as the focal point of the village ever since. All village organisations use the hall on a regular basis and they are invited to appoint a representative to sit as a trustee and part of the management committee. Meetings are held on the 1<sup>st</sup> Tuesday of every other month.

Trustees are a very important part of the management of the village hall and they are required by law to act in the correct manner of a trustee. The trustees are covered by the village hall insurers against any claims made against them provided they have acted properly in their role as trustees.

The management committee have since 2000 added the Millennium Room, during the past five years a new roof has been completed, a new kitchen installed and the outside of the hall repainted. At the moment arrangements are almost complete to have the main hall redecorated. The hall is very versatile: it has a number of areas that can be used for meetings, lunches, dinners,

plays and other stage productions. The management committee would like to see more use of the hall especially for a youth group which would have their full support.

Every penny of income is spent on improving and maintaining the hall. The charges for hiring the hall have remained at a very reasonable level as the management committee feel that it is in the interest of the village that all organisations and villagers should be able to hire the hall at a reasonable cost.

The Annual General Meeting of the Village Hall is held in April/May of each year when trustees/committee members are appointed. At the AGM this year four members of the committee are standing down, the chairman, treasurer, bookings secretary and minutes secretary. One person has kindly come forward to take on the role of minutes secretary, however three further people are required for the other roles.

In order for the village hall to continue in its current format village people are requested to come forward and be part of a very important village organisation.

If you are interested in becoming a trustee/committee member please contact Fred Nicholls 01206230688 or any committee member.

*Fred Nicholls*

## PRIDE OF TENDRING AWARDS

Unsung heroes from right across the Tendring District have been honoured in a new award scheme. The 20 recipients of Pride of Tendring Awards were announced on 1<sup>st</sup> January, 2012 and will be followed by a special ceremony to be staged at Clacton's Princes Theatre next month. The initiative is aimed at recognising those who make a real difference to the lives of others in the community.

The awards are the brainchild of Tendring District Council (TDC) Chairman Alan Goggin, are sponsored by Dong Energy and have the support of the Clacton, Frinton and Walton Gazette and

the Harwich and Manningtree Standard. All 60 Tendring District Councillors had the opportunity to put forward their nominations which represent a whole host of organisations throughout Tendring. They are men and women of all ages who do so much good work in and for their community and are richly deserving of these accolades.

While the 2011 awards are the first, it is the aim to make them an annual event on the Tendring calendar. "The whole idea is to honour our previously unsung heroes and heroines," said Cllr Goggin. "They all come from within the

Tending boundaries and I have met many such people during my time as Chairman. There is so much good work going on behind the scenes that goes unrewarded and I felt it was time to do something to put that right. I am now looking forward to meeting all the recipients in person at the reception which is being staged on February 10. I would like to say a big thank you to Dong Energy for sponsoring the awards and helping to make it such a special event and to the Gazette and Standard for also coming on board. Hopefully it may inspire many others to get involved with volunteering and help to create the next generation to be honoured in years to come."

An all-party group at TDC helped to lay down the guidelines for the awards and all will have the opportunity to continue to be involved with the scheme for the first 12 months at least.

The list of recipients is as follows:

**Yvonne Wienling** – a volunteer at Catch 22, an organisation which provides an appropriate adult service at Clacton Police Station for those who have no other support at an interview and to ensure it is conducted fairly.

**Vera Doughty** – 90-year-old President of Holland Residents Association who has served the area for 30 years and has worked for Family Support for 20 years.

**Sylvia Hobbs** – actively involved in many organisations in Jaywick including the Community Forum, Green Team, Golf Green Hall management committee, Jaywick and Tudor Residents Association.

**Sue Croft** – a campaigner with Grey Pride which aims to change cultural and political attitudes towards older people.

**Chris Scott** – a man who has set up the most successful rock school in Tendring based in Harwich, helping to keep young people off the streets and taking part in music.

**Brenda Oliver** – is involved with at least a dozen groups in Jaywick – which include Guides, handicraft club, Jaywick Forum, gardening club, Jaywick and Tudor Residents Association - as well as being a carer for her husband.

**Jessie White** – has been involved with Family Support in Brightlingsea since it started in 1992 and was one of the original volunteers. She has raised tens of thousands of pounds for charities.

**Jacque Collyer-Smith** – from Brightlingsea is a founder member of the Seaview Players, acting in and producing many shows as well as organising fund-raising concerts. She has been involved in the Deputy's Christmas gift fund committee for 46 years.

**Mhairi Kimmitt** – has been involved in a whole

range of community groups in Brightlingsea including treasurer for the scouts, editor of United Church magazine, founder of Brightlingsea Playgroup, and involved in many other church activities.

**Kevin Hudson** – a retained firefighter in Manningtree who is a member of Manningtree St John Ambulance, and helped set up Manningtree Community First Responders.

**Phil Cooper** – Chairman of Clacton Bowls Club who devotes endless hours to the club and who also lost five stone to donate one of his kidneys to his wife who suffers from a long term illness.

**Valerie Wrycraft** – a very active member of St Michael's Church, Ramsey and is both treasurer and organist. She is also Chairman of Little Oakley Parish Council.

**Trisha Turner** – a resident in the Rush Green ward of Clacton who runs the local community centre and helps out both the young and the old.

**Michael Dorling** – is devoted to the care of Great Bentley Green and is Chairman of the Friends of the Green. He is also involved in many groups and helps run the village hall.

**Col (Retd) Martin C Frostick OBE** – has made a real difference in the village of Great Bromley having been a Parish Councillor for ten years, its Chairman for four. He has been tree warden for seven years and village hall trustee for nine years.

**Pastor Eamon Black** – from Asher Ministries of Clacton carries out out-reach work with youngsters and the disadvantaged in the Clacton area.

**Darren Couchman** – a survivor of testicular cancer who works tirelessly to raise funds for cancer research and who tours Britain to raise awareness of the disease he suffered from.

**Neil Whitfield** – lives in Clacton and has given voluntary service to Tendring for more than 20 years as a volunteer coastguard, supporting young people in performing arts and runs St Philomena's School Choir.

**David Foster** – a leading citizen who works tirelessly for the maintenance and enhancement of the Frinton Community. He does much of his work under the umbrella of Frinton in Bloom.

**Alan Wiggins MBE** - was Chairman of Clacton Carnival Committee for 30 years up until 2008 and was also treasurer of Tendring Community Voluntary Services for eight years.

## BERLIN TO LONDON

cycle around Great Bromley and further afield on my recumbent tricycle. In April/May 2012 I will be cycling from Berlin to London alone and unsupported on my recumbent trike to raise money for Help For Heroes. My fundraising page is at [www.bmycharity.com/BerlinToLondon](http://www.bmycharity.com/BerlinToLondon)

Most of the ride is on one long European cycle route but it wends its way through lots of interesting towns and villages in Germany and Holland, most of which I have not previously visited. I will cycle from Berlin to the Hook of Holland,



back to Harwich and then riding into London to finish off at Nelson's Column. I plan to cycle about 100km (60 miles) per day as I trundle my way across Germany and Holland. I expect to take two weeks or a little more to cover the 1,239 kilometres (770 miles).

I'll be writing about my trip as it takes place on my blog at [auntiehelen.wordpress.com](http://auntiehelen.wordpress.com).

Any support you can give towards my fundraising target of £1000 would be much appreciated!

*Helen Hancox*



## IN THE GARDEN IN FEBRUARY

The first vegetables to start the year off with are onions and parsnips. Onions, which include shallots, are among the easiest to grow and are mainly used for pickling. Plant shallots in rows 1' apart with 6" between. Parsnip seed should be planted at the end of the month with the seeds 6" apart and the rows 1' apart.

Rhubarb should be showing its tips now. Cover with well rotted compost or manure. To get one root early cover with a black plastic bag or some other form of cover.

At the end of the month if you are going to plant early potatoes, cut a grow bag in half, stand on end and put three potatoes in each; if frost threatens they can be moved in to the garden shed or greenhouse.

Beetroot is another crop that can be planted early at the end of the month in drills ½"

deep and rows 6" apart.

If you have a cold frame plant brussel sprouts this month in trays of John Innes seed compost, cover with newspaper and a sheet of glass. As soon as they have formed their first true leaves they can be hardened off and planted out.

Summer cabbage can be planted at the end of the month. Sow under cloches. Sow seeds thinly in drills ½" deep in rows 6" apart and, as with brussel sprouts, as soon as they have made their true leaves they can be transplanted out.

Sow the first crop of carrots this month: choose the stump-rooted variety, sow in drills ½" deep and rows 6" apart.

*Frank Griffiths*

Well folks it's bargain time, two for one.

**December 2011** resulted in our Christmas party when we were so ably entertained by the Folk Dance Club. Before they started we were given some of their past history. Originally they were The Gt. Bromley Folk Club and they met in "The old Guide Hut" of whom many of us present have fond memories.

They performed a selection of their dances the first being "Touchstone" as first published in 1966. They also danced New Castle, Non Such, Fondango and Redwing.

We then enjoyed a most delicious buffet, supplied by the committee and members. Afterwards we needed to burn some calories so it was the members' time to join the dancers and once we got to grips with the terms what fun was had by all, especially those who watched the rest of us trying to keep up with the caller and the music.

**January 2012.** This meeting was to prove very different as one of our own members, Sue Clarke, was to be the speaker about her interest in metal detecting.

She had a father who was interested and on her 16th birthday her parents bought her a metal detector as a present. Her father took her out as he felt she would be too vulnerable on her own. She then gave us a potted history about the legalities of metal detecting: gold and silver finds have to be reported. Although she has found many items she will never sell any. She says when she has had enough the finds will be donated to a museum. She had brought along a very good selection of her finds.

Sue has helped the police with a murder enquiry, but didn't like doing it very much; she

was also asked to help TV's Time Team but unfortunately was on holiday in Egypt when they needed her. Colchester Castle are always interested in any Roman coins found, sometimes her finds need to be plotted and recorded for museum records. Her favourite find has been a miniature of the Roman God Mercury. She has found silver pennies, whole, halved and quartered (they were sometimes cut up when smaller denominations were needed). She also has a rare find of a sword clip which Colchester Castle would like to have, but not to display just to archive. No Way Hosea!!

A very interesting and fascinating talk, what talent our Institute has in its midst.

*Joy Rolfe*

## KITCHEN CORNER

*A warming dish for winter:*

### Sausage Casserole

*Serves 4*

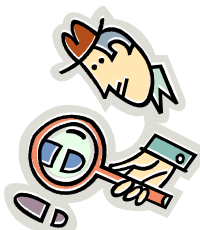
- 1 lb sausages
- 1 tbsp flour
- 1 oz dripping or oil
- 1 onion
- 2 medium potatoes
- 1 cooking apple
- 2 tomatoes
- ½ teacup stock or water

#### Method

Dip sausages in flour and fry till brown. Place in a greased casserole. Fry sliced onion and lay over sausages. Cover with peeled sliced potatoes and season well.

Lay peeled sliced apple over, then skinned sliced tomatoes. Add stock or water, cover and bake 1 hour 350°F.

*Jill Frostick*







Charity No. 1136038  
Company No. 7099461

# Little Dragons Pre-School

Great Bromley & Frating

Ofsted Inspected

Website: [www.littledragonspreschool.org](http://www.littledragonspreschool.org)

Email: [littledragonspreschool@gmail.com](mailto:littledragonspreschool@gmail.com)

## Great Bromley Village Hall

Monday & Wednesday 9.15-11.45am & 12.15-2.45pm Tuesday & Thursday 9.15-11.45am

Children 2-5 years

Lunch time session available Mondays & Wednesdays

For more details/visits please contact us on 0785 7503103

It is with regret that our planning application with Tendring District Council was refused on November 15<sup>th</sup>, we will however be lodging our appeal and we look forward to updating you all very soon.

Last term was a busy time at preschool. We celebrated Halloween at the end of October by making fairy cakes and decorating them with icing sugar and liquorice to look like spiders! The children really enjoyed the cooking and after reading the 'Little Red Hen' story the children asked if they could make some bread rolls too. They enjoyed making them and all agreed it was good to share and they tasted yummy. The children then enjoyed learning about 'Diwali' with lots of fun related activities including making 'diva' lamps from salt dough.

On the 5<sup>th</sup> December Amanda visited preschool to tell us the story of Jesus. The children enjoyed listening to the story and then we made some 'Christingle' oranges. The children were very busy preparing for Christmas – making cards, calendars and decorations, lots of lovely glitter! We also had fun practising the songs and actions for our Christmas concert.

We say good bye to Arthur, Charles and Ava who will start St Georges Primary School in January, we wish them luck on their new journey at school.

We would like to welcome the new children that are joining us this term - Bethany, Maisie and Alexander, we hope you enjoy your time with us. The children have all settled back in after the Christmas holidays

with our older children as always helping to look after the new ones. The children have had great fun making a space station, this followed on from some of the children's role play. They have been engrossed in making stars for backgrounds, oxygen tanks and even covered some wellies with glitter for space boots! We made a huge rocket too, lots of fun.



Just a reminder that we are collecting the vouchers from 'Nestle box tops' so please tell family and friends. We take children from the age of two years and now offer a 'home visit' to families of children prior to them starting Pre-school. This gives the child the opportunity to meet their key-person in their own home, aiding the transition stage to pre-school. It also enables us to collect and share information in a confidential environment.

For further information or to arrange a visit to the setting please contact us on the above number.

Dates for your diary:

**Week of February 13<sup>th</sup> -17<sup>th</sup> Half Term Week**

Pre-School re-opens	20 <sup>th</sup> February
Book Week	27 <sup>th</sup> February
World Book Day	1 <sup>st</sup> March
Dad's Week	19 <sup>th</sup> March

## FRIENDSHIP CLUB

2012 - The New Year is already one month gone - we had our Christmas party and the dinner at the Cross Inn which was enjoyed by everyone. An outing to Maldon and Tiptree - good entertainment at the meetings during the year with many thanks to our "tea ladies" for that welcome cuppa and every one of the helpers who clear the tables and chairs each month.

Now we come to the serious question for this year. Our numbers have reduced over the last couple of years which of course means we do not get as much money coming in to cover our expenses each month - £100 - so we must think of ways to solve the problem.

We will have the Auction later on but unfortunately the stalls at the meetings

have dwindles. Frank has always had contacts to obtain cards very cheap, many free, which were a great help but no more. H-E-L-P! We need suggestions for money making!

Your subscriptions are due.

With great sadness we tell you of the passing of NANCY (Kempster). Being busy with the farm they were unable to join us until January 2011 but she and George soon took an active part in our activities. Nancy will be missed and we look forward to seeing George again.

Competition for February:  
A key.

*Vicky Griffiths*



## THANKS

### St Helena Hospice Stall



Firstly, we would like to apologise for not having the jigsaws and bric-a-bac out for the first two weeks of January as promised in the December/January edition of the magazine, but this

was unfortunately due to ill health and hospitalisation. Gladly all is now well and we are again up and running. Secondly we are again publishing the letter we have received from the Hospice as its contents apply to all of you who support the stall one way or another.

Many thanks.

*Jenny and John  
Briar Road, Great Bromley*

Letter to Jenny and John from  
Rosy Stamp, St Helena Hospice Director  
21 November 2011

"Thank you for your letter and magnificent donation of £2,513.27 which you raised for St Helena Hospice from the sale of flowers, fruit and vegetables at your garden gate again this year. We enclose our receipt.

Your donation will be used for the care and comfort of our patients and their families here in the Hospice and in the wider community.

We are extremely grateful to you for your hard work and continued support to St Helena Hospice and please pass on our thanks to the people who so generously donated fruit and vegetables for you to sell."

# MAKE AN IRIS FOLDED VALENTINE CARD

## ◆ Materials:

- ◆ 1 sheet card – any colour
- ◆ 1 piece card half size of card to cover workings
- ◆ 3 different colours/patterns of coloured paper (wrapping paper will do)
- ◆ sellotape
- ◆ double-sided tape, glue, or any other adhesive of your choice

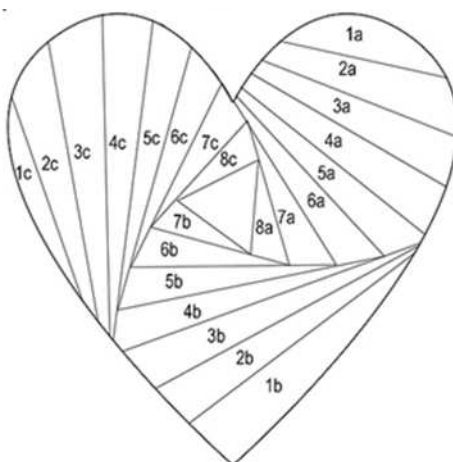
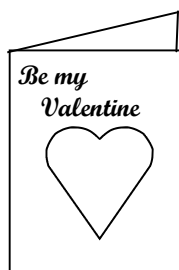
## Instructions:

- Take a piece of card and fold it to the size of card you want (i.e. A5 folded becomes A6 card)
- Transfer the heart shape on to a piece of card making sure the design is on the front so that card opens correctly!
- Cut out the heart shape using a sharp craft knife. Do not throw the cut out section away as, if desired, it can be used to further decorate card or even make another card!
- Cut the coloured paper to be used to decorate the heart into 2cm strips and fold in half lengthwise. To avoid confusion whilst doing iris folding, call each pattern paper 'a', 'b' and 'c'.
- Tape the printed heart pattern on a table top (or whatever flat surface you work on) using masking tape as this is easily removed without tearing the paper/card. Take the card front with the cut-out heart shape and flip it over. Tape this over the heart pattern, making sure that the cut-out and the pattern line up.
- Starting with your "a" strip, and the part marked "1a" on the pattern, cover the cut-out with the strip, making sure that the folded side is aligned with the straight line in the pattern. Cut the strip - use just enough of the strip to cover the heart and a bit of overlap so that you can tape the edges. Next, take the "b" strip, and cover "1b", then the "c" strip and cover "1c" – continue in this fashion until the heart is almost covered. Note: there is really no "8b" in

the pattern. Cover the central triangle with a different pattern – you may want to use a shiny or glittery piece of card.

- Carefully remove the card front from being taped to the pattern, and flip it over – this is when you see the finished pattern on the front of the card for the first time. With double-sided tape or adhesive, stick a blank piece of card on the inside over (the 'worked' side to hide the sellotape etc of that side.

Decorate the rest of the card as you fancy and send it to the one you love.



Iris Folding Heart pattern

# 2012 EVENTS



## FEBRUARY

- 1 WI meeting, Village Hall, 7.30pm
- 4 P.C.C. meeting, St George's church, 10.00am
- 9 Lt Bromley Parish Council meeting, The Haywain, 7.30pm
- 14 Gt Bromley Parish Council meeting, Village Hall, 7.30pm
- 16 Friendship Club meeting, Village Hall, 2.00pm
- 21 Shrove Tuesday Food for Thought, St George's church, 6.30pm
- 22 Beat Surgery, Village Hall, 7.30-8.30pm

## MARCH

- 6 Gt Bromley Village Hall Trustees meeting, Village Hall, 7.30pm
- 7 WI meeting, Village Hall, 7.30pm
- 13 Gt Bromley Parish Council meeting, Village Hall, 7.30pm
- 15 Friendship Club meeting, Village Hall, 2.00pm
- 24 Farmers' Market, Village Hall, 10.00am
- 25 A.P.C.M. St George's church, 11.45am

## APRIL

- 4 WI meeting, Village Hall, 7.30pm
- 10 Gt Bromley Parish APCM Council meeting, Village Hall, from 7.00pm
- 19 Friendship Club meeting, Village Hall, 2.00pm
- Lt Bromley Parish APCM Council meeting, The Haywain, 7.30pm

## MAY

- 2 WI meeting, Village Hall, 7.30pm
- 8 Gt Bromley Parish Council meeting, Village Hall, 7.30pm
- Bat talk, St George's church
- 17 Friendship Club meeting, Village Hall, 2.00pm
- 20-27 Red, white & blue Jubilee Scarecrow Festival

### Edible Essex Talk

By Christine Walkden

Simple Ways to Grow Your Own - in the UK's driest county

Thursday, 16<sup>th</sup> February 2012

19.30, Writtle College

Sponsored by Essex & Suffolk Water

This talk is suitable for both novice vegetable growers and those looking for a few handy tips. Christine will be signing her new book "**No nonsense vegetable gardening**", so bring along your copy, or purchase one at the event.

**Tickets:** Attendance is **FREE** but booking is **ESSENTIAL**. To obtain a ticket please contact Sophie Blythe by email:

[Sophie.Blythe@essexrcc.org.uk](mailto:Sophie.Blythe@essexrcc.org.uk), or phone: 01376 574330 or visit [www.essexrcc.org.uk](http://www.essexrcc.org.uk)

**No admittance without a ticket!**

### Annual Parish meeting

for the election of Churchwardens followed by the

### Annual Parochial Church Meeting

in St George's church, Great Bromley  
Sunday, 25th March  
at 11.45am

Eligible for Parish members

## “SHROVE TUESDAY FOOD FOR THOUGHT”

The Rector and Churchwardens  
invite you to  
St George's Church, Great Bromley  
at 6.30pm  
on Tuesday 21<sup>st</sup> February  
for refreshments  
and  
to hear a presentation about your village  
church and its finances by the Reverend  
Jenny Tomlinson, Parish Development  
Adviser, Colchester Area Team

For catering purposes or more  
information, please contact Jenny at  
01206 230688 or [jenny@fryverning.net](mailto:jenny@fryverning.net) or  
Ann 01206 250229



The Village Hall committee has decided to  
hold a

## Farmers Market

on Saturday 24<sup>th</sup> March  
from 10am to 1pm  
in the Village Hall.

It is hoped that all the usual stall holders  
will be there.

If the village supports the market they will  
continue, however failure to support the  
stallholders will mean that we will no  
longer be able to hold any future markets.

To all those people who have not attended  
one of the markets, you will be amazed at  
the quality, freshness and price of the  
products on offer.

Do come and support it.



WEA - Ardleigh Branch

### THE ESSEX COASTAL TRADE FROM 1800

Tutor: Roger Beckett - 10 week course  
Commencing: Thursday 19th January 2012  
Ardleigh Village Hall, Station Road, Ardleigh, CO7 7RS at 2.30 p.m.  
Cost of 10 week course - £45

The course takes an overview of the coastal trade or Essex ports during the 19th and early 20th centuries. It includes an examination of the numbers and types of vessels owned at the three Essex ports of registry: Maldon, Colchester and Harwich. The course could provide a useful starting point for anyone undertaking in depth studies of particular aspects of Essex shipping. It could also be useful for anyone pursuing family history with Essex maritime connections.



We hope to see you on 19th January, you can come the first week and see if it is the course for you. Payment is required on the second week of attendance. We have a tea break of about quarter of an hour, so we end about 4.15 p.m. each week.

Please contact Jill Frostick 01206 250263 or John Terry 01206 230490 if you need more details.

# NANCY KEMPSTER - 1930 - 2011

We were all very saddened by Nancy Kempster's sudden death in December; our condolences go to her husband George, their three children and other relatives.

Nancy was the youngest child of Ernie & Agnes Austin. She lived her whole life in Great Bromley. Last year she had been wondering, with some local friends of the same generation, about who was the longest continuous resident of the village. At a village event she asked my mother whether she qualified, but Jill admitted she'd spent a year in Little Bromley when first married. Nancy retorted "Well you don't count, then!" I can just imagine her saying that, with mock sharpness and that twinkle in her eye! In this modern day of easy transport and global opportunity it seems unlikely there will be many folk who will match Nancy's 80 years in her village of birth.

Of course, Nancy was very involved with village life; she used to play in the badminton club at the Village Hall, was in the WI and performed in their shows, and in later years she was involved in the Friendship and carpet bowls clubs. Like her brothers, she and her family were very much involved with the cricket club over the years.

I had two wonderful evenings chatting to Mr & Mrs Kempster at New House Farm last summer, at which time I obtained this picture. A few years back Nancy wrote a fine account of her primary school days in the 1930s; she gave me a copy which I hope to share with you in a future article.

*Hugh Frostick*



Nancy Kempster c. 1947.  
*Photo courtesy of George Kempster*

## MEMORIES

So we have re-read those accounts of others' good and bad events throughout 2011, packed away the tree trimmings and the Christmas cards which remind us of friends and events of past times and made all those New Year resolutions that we really do intend to keep and may have already forgotten. Maybe we did over indulge, just a little, over the festive season and we are finding it hard to diet now. Anyway, may I wish one and all a very healthy New Year as I feel that one can usually improve one's state of happiness

but can only make the best of what we receive in other areas of life.

Residing now in Frinton-on-sea, which was not unfamiliar to us as we had made many trips here all the year round in all weathers, but usually the winter, I find the living pleasant with easy access to both shops and beach walking. The natives are very friendly and we are fortunate to have wonderful neighbours and an 18th century church, also within walking distance. With large congregations it is hope to raise funds

for improvements to the heating system before the present one gives up altogether.

It was most difficult to contemplate leaving our country home where Elizabeth and Roger had spent their younger years and where our six grandchildren had enjoyed wonderful holidays from the time of their births. So many memories, relatives, parties, bonfire gatherings and quiet meals with friends, not to mention the football matches whilst being involved with the young people from Sunday school.

When we first moved into Greenacre, so named by the children, we felt as though on constant holiday, despite building and garden work. The grounds around provided space for growth of body, mind and spirit for the entire family; great peace and happiness added to our blessings. We were pleased that our mothers and Dennis' father also enjoyed the area.

There is a lot I miss, meeting with acquaintances, quiet times in church and sharing the Holy Communion on ordinary as well as special occasions, gatherings of friends, the residents of Seven Rivers and so much more.

We were saddened when John Appleby passed on and many others who had smoothed our way into rural life and I remember the welcome from Nancy Kempster, George and their family and many others, too many to mention here, gave to us. I read, somewhere, that people come into our lives, some just pass through, while others stay awhile and some stay for a lifetime, they all touch our lives just when we are in need of them. I sincerely thank those of you who did just that, touched the lives of Dennis and myself and the lives of our children and grandchildren. I cannot tell you how grateful we all are for having lived and grown in the villages of Great Bromley and Arleigh.

Now we look forward to a new year - the Queen's Jubilee, the Olympics, new babies and celebrations, both private and public. Let us hope and pray for peace in our world. God's blessings on you all and in all you do.

*Olive Sparling*

**I regularly** do internet searches for the Bromleys, their people and matters I want to find out about. I was very intrigued to find references to the **Great Bromley Reef** which I had not heard about...turns out of course it is that "other" Bromley in Kent, which is neither Great nor Little, the reef name being a play on Australia's Great Barrier Reef. Reefworks is quite interesting nonetheless and you can see the film about it at <http://www.youtube.com/watch?v=IIP0pn3jZWl>  
*- Hugh Frostick*

## “Ought fer Nought?”

Do you remember “Bob a Job” week? If you are under forty years old, possibly not

It was the annual fund-raising-and-community-action effort carried out by cubs, scouts, brownies and guides all over the country.

It took various forms over the years but in the 1950s when I was doing my “dib-dib-dibbing”, I well remember setting out for a day with one or two pals, proudly sporting our cub uniforms (Gosh those green jumpers were ITCHY!), complete with carefully ironed and folded cub scarf, neatly held in place by our freshly-polished leather woggle (no plastic stuff in those days!), looking for jobs to do for a shilling.

Rat-tat-tat! There we would stand, nervously at attention, waiting for the door to be opened by we-knew-not-who, ready to give a smart cub-scout salute and cry “Bob a job, Missis!” (or Mister!).

What kind of response we would get we were never quite sure. A flea in the ear from some, a beaming smile, a glass of lemonade and a currant bun (to go with our freely-given “bob” for which we did nothing) from others, or a nice, easy little job for which we received generous reward from many (shoe cleaning was a regular task, I seem to remember).

And then there were the hard-bargainers who would set you a morning of hard labour for scant reward.

I remember still a whole morning spent on my knees, weeding

a huge driveway (so it seemed) by hand. We started after breakfast, my pal and I, and were still at it by lunchtime. “That’ll do lads,” said our task master finally, “you’ve done a good job there.”

Chapped knees, sore fingers and wonky woggles were forgotten for a moment as we stood expectantly waiting for our reward. Deep into his pockets he delved in order to retrieve the largess he was about to bestow upon us. A handful of loose change appeared. Carefully he picked over the coins until he found two, small sixpenny pieces – one for each of us! (For those of more tender years, those two sixpenny coins in “old money”, worth 2½p today, together made up the “bob” we were entitled to for our morning’s hard labour.)

Surveying our crestfallen faces he barked, “You don’t get ought fer nought these days lads.” - and shut the door.

A lesson learned, perhaps. Or perhaps not. Older now (much older!) and wiser, too (maybe!), I have long since discovered the pleasure and fulfilment to be gained from giving a little time, as an unpaid voluntary helper in some capacity or another.

Here at Seven Rivers we have a team of volunteers who contribute to our residents’ quality of life in a variety of ways. None is paid and yet all are richly rewarded. To be able to be of real help to another, to bring pleasure or provide companionship and, at the same time, to become a member of this really rather special community, offer great reward in themselves. Indeed, the value of such involvement both to us, as volunteers, and to the residents and staff of Seven Rivers is beyond price.

So do come and join us! (See our advert on the next age.)

*Colin File*  
Volunteer Newsletter Editor.





## Volunteers at Seven Rivers Residential Nursing Home

Come and share  
your time, your  
interests or your  
skills with us.

A warm  
welcome is  
assured!  
We need

companions, readers, games players,  
drivers, gardeners, computer enthusiasts -  
whatever you have to offer, we can use!  
Guidance and training provided as needed.

Expenses paid.

Just phone Pauline Melton on 01206  
230345



## Seven Rivers Residential Nursing Home

*"Thank You To All Our  
Friends!"*

We would like to say a very big "Thank  
You" to all our friends and supporters for  
all their help during 2011 - your interest  
and support are very important to us.

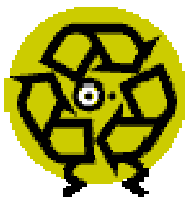
We wish you and yours a very happy,  
healthy 2012

Oh, and here's a thought:  
Wondering what to do with that lovely little  
Christmas gift that was so kindly given but  
for which you have no real use?

Wonder no more - we would be happy to  
find it a home!

Just call Pauline Melton on 01206 230345

# TENDRING DISTRICT COUNCIL NEWS



As you are already  
hopefully aware Essex  
County Council's  
Recycling Centres for  
Household Waste Service  
is changing. I can confirm  
from the **9<sup>th</sup> January  
2012** the following

changes will commence:

- All sites will **open at 9am** rather than the current 8am.
- Winter opening times (from 9<sup>th</sup> January 2012– 29<sup>th</sup> February 2012) for all centres will be **9am to 4pm**.
- Summer opening times (1<sup>st</sup> March – 15<sup>th</sup> October) for all centres\* will be **9am to 5pm**. \*Except the Canvey Island Centre which will continue to close on Sunday at 4pm throughout the year.
- Late night opening on Tuesdays during a limited period over the summer will **no longer take place**.
- **St Osyth and Ongar Recycling**

**Centres** will be permanently closed from 4pm on the 8<sup>th</sup> January 2012.

The following **LOCAL** recycling centres will be closed on certain days of the week from the 9<sup>th</sup> January 2012:

- **Dovercourt:** – Closed Thursday & Friday
- **Kirby:** - Closed Tuesday & Wednesday
- **Lawford:** – Closed Wednesday & Thursday
- **Witham:** – Closed Thursday
- **West Mersea:** – Closed Sunday, Wednesday & Thursday

All other centres will continue to operate **7 days a week**. For further information on recycling centres residents should either visit [www.essex.gov.uk/recyclingcentres](http://www.essex.gov.uk/recyclingcentres) or contact **0845 603 7625**.



## Incidents in Great Bromley during November and December 2011

### Theft Other

- Frating Road - (Phone stolen at party)
- Hall Road - (1.5 Tonnes of sand stolen)
- Rectory Road - (Hamilton Lodge - Diesel stolen)

### Animal

- Hall Road - (Pigs loose on road)
- Hilliards Road - (Horses loose on road)

### Burglary Dwelling

- Brook Street
- Frating Road

### Burglary Other

- Rectory Road - (Cricket Club)

### RTC - Harwich Road

### Suspicious Circumstances

- Chase Road - (Male urinating and defecating in the park)
- Badley Hall Road - (Possible hare coursers) x 2

## Newsletter

### Lock your car

Police are warning drivers in Clacton to think carefully about vehicle security following a series of thefts in the town. Vehicles parked in the town centre and on the Royals estate have been targeted. Close all the windows and lock the doors and boot. Remove sat navs, including the holder, mobile phones and mp3 players and, if at all possible, park your car in a garage or in a well-lit area. Don't leave anything on the parcel shelf either. Expensive items left out on display are an open invitation to an opportunistic thief." If you see anything contact Clacton police station on 0300 333 4444, or anonymously on Crimestoppers 0800 555 111. For more information on keeping your vehicle secure, visit [www.essex.police.uk](http://www.essex.police.uk)

### Message From Trading Standards

*Genuine charities are losing hundreds of thousands of pounds every year to rogue collectors, so if you are considering using a doorstep collection bag, follow this advice:*

- *Genuine charity bags should carry a charity number. Don't mistake these for 'business' numbers.*
- *You can check if a charity is genuine by phoning the Charity Commission helpline on 0845 3000 218 or by visiting: [www.charity-commission.gov.uk](http://www.charity-commission.gov.uk)*
- *Some bags you receive will be from commercial collectors who will sell your items for profit.*
- *There is no guarantee that a commercial collector will give any profits to charity, even if their bags state 'for good causes' or 'supporting people in the third world'.*
- *If you are unsure take your donations directly to a charity shop.*

### What can Neighbourhood & Home Watch members do about metal theft?

This is a matter for everybody in the community, but Neighbourhood Watch and Home Watch can lead the way.

Firstly, we all need to be alert to the situation and keep watch for vans and trucks driving around our streets looking for the opportunity to steal metal, and reporting the details to the local police or Crimestoppers (0800 555 111). No item of intelligence is ever too small; it might be the final piece of the jigsaw and in some cases there might even be the possibility of gaining a reward.

Secondly, be aware of workmen removing metal items in the street. The thieves are using uniforms, stolen vans etc. One witness recently reported that they did not look like real workmen - they were working too fast.

Thirdly, members also need to be on the lookout for unlicensed venues where stolen metal is cleaned up, often by burning off the covering and where the identifying marks are removed, before being taken to the licensed dealers. The police and local authorities need to know.

Finally, members who live in the vicinity of licensed and unlicensed sites must be alert to vehicles turning up outside the normal

working hours. Again details should be passed to the local police.

· This is a problem that affects us all and can lead to deaths.

· Keep a watch out for suspicious vehicles and workmen.

**There have been several calls in relation to persons telephoning members of the public offering the following products**

(1) A Panic button which goes straight through to the police

(2) A telephone line that goes straight through to the police.

(3) A burglary Insurance, which is Police backed

(4) These will often state the products are backed by the Police

THESE PRODUCTS ARE NOT BACKED BY THE POLICE.

If you receive a call please state that you are not interested. Apparently appointments have been made with some home owners. Please do not entertain these callers. Contact Consumer Direct on 08454 04 05 06

Calls are being made to residents in the Tendring District in relation to home security, the caller will mention crime prevention and Burglary Alarms.

These persons are claiming to be working in conjunction with the Police.

PLEASE BE ADVISED THAT ESSEX POLICE DO NOT WORK IN CONJUNCTION WITH ANY COMPANIES SELLING OR GIVING AWAY FREE ALARMS.

It is advisable not to get involved with any persons cold calling at your door or on the telephone.

If you would like advice on home security please contact Dave Gillies the Essex Police Crime Reduction officer for the Tendring District he will be happy to advise you – Please call 101

**Warning Rogue Traders in your area**

We have had several reports and complaints in your area regarding work that has taken place by Traders. Some of these incidents have included people being pressured into have unnecessary work

## HELP PLEASE

Is there a lady local to Great Bromley who could show me how to use my Sony SLR camera properly. I want to get the best from the camera and need some tuition!



Please contact the Editor who will pass on your details to me.

done and left with a very poor standard of work costing thousands of pounds and no chance of getting their money back . Please read the following information and don't be caught out.

**Is your drive looking tired and dingy, guttering leaky, roof tiles loose or missing, garden overgrown or paint flaking?** You may get a knock at the door offering to fix those problems at a low price; you may even be able to pick what you want from a glossy brochure and, the trader can start on your work the same day or the next day. Essex County Council Trading Standards receive several hundred complaints every year in relation to these bargain offers which in reality are not bargains at all.

Doorstep traders may give false addresses on their paperwork or no paperwork at all and provide mobile numbers which are almost impossible to trace. In law you have seven days cooling off period in which to change you mind if the call was unsolicited .

**How can you avoid being conned?** Be polite but turn down the offer of having work on your house carried out by doorstep traders. Use a Buy with Confidence business if you need work carried out, they are approved by Trading Standards. Call Consumer Direct on 08454 040506 to ask for a list of traders in your area or go to [www.buywithconfidence.gov.uk](http://www.buywithconfidence.gov.uk)

Les Barnes PCSO 71909  
Thorpe Le Soken NPT Eastern

# THE DOCTORS' SURGERY NEWS

## Gt Bentley Surgery

I'm afraid that this month starts with the sort of news that nobody will want to read. Sadly, Dr Debbie Letton has decided to hang up her stethoscope and quit General Practice. She will be leaving us at the end of June. She will be sorely missed. As soon as a decision is made about how we replace Dr Letton I shall let you know through these pages. For the time being though, I am sure that everyone will wish her every success and happiness for the future – whatever she decides to do next.

Please don't let the mild weather put you off checking on elderly neighbours and friends though. I know a lot of older people don't get out and about much during the winter months even when the weather isn't too dreadful, so even if they don't actually need anything fetching or carrying, they'll probably be glad to see a friendly face.

Next time you come to the surgery, you will notice that we have now installed a do-it-yourself blood pressure reading machine in the waiting room. We hope a lot of you will use it. As part of our efforts to keep you all fit and well and to spot early signs of problems, we try to record readings for as many patients as we possibly can. However, some people still manage to slip through the net. If you know that you haven't had your blood pressure checked recently, please use the DIY machine while you are waiting for your appointment then give your reading to the doctor or nurse so that it can go on your records.

We are intending also to install a weighing machine of some sort soon for the same reasons. I promise it will be a discreet one - not the "I shout your weight out so that everyone can hear" variety. Again, if you know that we don't have an up to date weight for you, please weigh yourself and tell the doctor or nurse the result.

Finally, if you want to opt out of having your medical records uploaded to the NHS

spine, it is approaching your last opportunity to let us know. Realistically, I need to hear from you in writing no later than 1st March to be sure of getting your wishes properly recorded and actioned. It seems that most people don't feel strongly about the issue, but if you do, now's the time to say so.

*Hugh Cronin, Practice Manager, Great Bentley Surgery*

## NHS NEWS



NHS North Essex

### Non-Executives appointed to new single Board for PCTs

A new team of non-Executive Directors has been appointed to the single Board for the north Essex PCT cluster. The new Board, a reduction from three Boards to one, will be chaired by Chris Paveley from 1 December 2011 until 31 March 2013, when new organisations are likely to replace PCTs, if NHS reforms are approved by Parliament.

The non-Executive Director appointments are:

**Alan Hubbard** - previously Vice Chairman of Mid Essex PCT  
**Pam Donnelly, Tim Young and Jerry Wedge** - Non-Executive Directors from the North East Essex PCT Board

**Qadir Bakhsh, Renata Drinkwater and Stephen King** – Non-Executive Directors from the West Essex PCT Board  
Jerry Wedge will Chair the Audit Committee.

The single Board will govern three statutory PCTs as one organisation, reduced in size from the previous three. By joining forces, the three PCTs (Mid Essex PCT, North East Essex PCT and West Essex PCT) are able to make the most of their combined resources and will reduce running costs by more than £10 million over the next two years.

While managing the transition to new NHS organisations in 2013, the PCT cluster Board will be responsible for the service and financial performance of the local NHS and oversee health plans to transform services for patients.

# ST HELENA HOSPICE



St Helena Hospice  
your time...your hospice

## St Helena Hospice unveils new shop!

St Helena Hospice shops have had a really busy year this year, and would like to say a big thank you to all who have donated goods and visited any of our shops in the past year. We are also pleased to announce that we have opened a new shop in Colchester town centre!

Our new shop has opened at 24 Priory Walk, Colchester. We already have seven shops around the region, and this new store is a first in Colchester for the charity. Opening hours will be 9.30am to 5pm, so make sure you pop along to bag a bargain!

The Hospice is also making an appeal for more volunteers to work in any of their shops, based in Frinton, Clacton, or Dovercourt. If you have retail experience and would be willing to offer a few hours a week to work in all aspects of retail, then please call Indi Allen, Head of Retail Operations at St Helena Hospice, on 01206 791740. More information on the shops can be found at <http://www.sthelenahospice.org.uk/HospiceShops.cfm>

## Donate your unwanted pressies to the Hospice

As January is already upon us and with Christmas done and dusted for another year, perhaps it's an ideal time to start thinking about having a clear-out and sorting through those unwanted presents? And whilst having a sort out, why not donate your unwanted presents to a charity that needs them?

St Helena Hospice has eight shops dotted around the region, three in Colchester, one in Halstead, Clacton and Frinton and two shops in Dovercourt. Staff and volunteers who work in all the eight shops are keen to receive more donations in the New Year, and throughout 2012.

Each Christmas, we often receive gifts which are not quite right for us – the clothes which don't quite fit, gadgets we already have and ornaments we can't find a home for.

Instead of hiding them away in a cupboard, why not donate them to the Hospice? We can find a new home for these gifts by selling them in our shops or using them for raffle and auction prizes. And also don't forget that while making room for your new gifts, you can always donate your unwanted second hand goods to a worthy cause.

The Hospice provides specialist palliative care to people with life-limiting illnesses and all services are free of charge to patients and their families. St Helena Hospice have to raise around £5.8 million each year to support the work of the Hospice, and your unwanted presents could certainly be put to good use in helping raise this money.

If you have any items that you would like to donate, please take them to your local Hospice shop. For more information on our shops, please go to [www.sthelenahospice.org.uk/HospiceShops.cfm](http://www.sthelenahospice.org.uk/HospiceShops.cfm)

## THANKS

### Bingo Night for Spina Bifida

A very entertaining time on Saturday 19th November with 80 people attending. We raised an amazing **£525.00** on the night.

26	01	15	03	42
24	16	09	10	25
02	14	17	28	32
23	06	36	07	33

We added the Pounds and ounces money from our Tuesday night weigh in at The Cross Inn, from the last 15 weeks, **£183.00, plus 2** very handsome Guys for Bonfire night made by Daisy and Jake who raised **£51.77 from a collection on the bar. Thank you so much to Jake and Daisy for such a great effort.**

Well done all. Total **£759. 77**

Linda Pinhey

# MESSY CHURCH

## CHRISTINGLE 2011

For many years in our Benefice of Ardleigh and the Bromleys there has been a tradition combining Christingle Celebrations with the Crib Service on Christmas Eve.

The Children's Work Committee decided to try new arrangements this year, providing more opportunities for the children of our Benefice to work and worship together.

Messy Christingle took place on Sunday December 4<sup>th</sup> at Ardleigh School. It is always difficult to predict how many children, parents and carers will attend. On this occasion we were overwhelmed with families and friends from both villages and beyond, in fact we were concerned at one point that we might have to limit the numbers at our venue.

Ably led by Fr. Robert and the Rev. Gill Moore our growing band of "all age" helpers arranged five different creative activities on the theme of Christingle. Each child and many adults made their own Christingle Orange. (the oranges donated by Waitrose)

learning by the making themselves the true meaning of Christingle.

Later everyone joined together singing, praying and finally parading outside where the Christingles were lit making a circle of light (a magical and moving experience).

The afternoon culminated in a sumptuous party tea, sharing the delicious food provided by the band of helpers from the Children's Committee.

Our thanks to all those who helped and provided and those who came to share and join in this celebration of Christingle.

Proceeds from the afternoon will be donated to the Children's Society. All children were given a Children's Society collection candle which were to be returned to us at the Crib Service, lead in both churches by Fr. Robert and Rev Gill Moore, on Christmas Eve .

We are looking forward to the next Messy Church session which will be in Great Bromley Village Hall. Date to be arranged.



## BURSARIES AVAILABLE FOR NEW VOLUNTARY SECTOR ICT SERVICE

An exciting new initiative has been launched to provide better access to ICT support for hard pressed voluntary sector organisations across Essex. Bursaries will be available which could help some small organisations get free support for a year!

Essex Online.NET is a not-for-profit social enterprise which offers voluntary and community sector organisations access to ICT information, support and guidance. It is the result of Rural Community Council of Essex (RCCE) working in partnership with counterpart Suffolk Acre's Suffolk Online, to improve provision for the sector in the county.

A limited number of bursaries of up to £300 are available to voluntary sector organisations towards the cost of ICT support packages. To qualify organisations must meet certain criteria, which include being a registered charity, able to provide the latest set of annual accounts, and have 12 or less active computers (including servers).

To find out how Essex Online can help your organisation telephone 0845 8150081, email: [support@essexonline.net](mailto:support@essexonline.net) or visit the website [www.essexonline.net](http://www.essexonline.net). To find out more about the bursaries contact Shelley Labbett at RCCE on 01376 574330.

# THE RECTORY, GREAT BROMLEY

Dear Friends,

After I had returned home from the Holy Land I took up employment with Sealink U.K. Ltd in Anglesey. I dealt with reservations for cars and freight and export and import documentation for H.M. Customs. It was a job with plenty of variety and I met the general public and lorry drivers. This was a world apart from my previous experience which had all been in the world of learning and education. However I think it was a vital part of my training for ministry and it helped give me an understanding of the world of business and commerce. The cut and thrust and the dirty tricks people played upon one another taught me a great deal about human nature. It was not all like that of course – there was a lot of goodness and kindness too.

I was earning a good salary and there were prospects of promotion to management level. However there was still that sense of vocation to the priesthood, that sense in which I would never be fulfilled until I submitted myself. I wrote to my former Vicar

who was then in his retirement and his reply said that Jesus had to become vulnerable at Bethlehem and on Calvary and that we all had to do this to get anything done. It was a question of whether I would offer myself for stipendiary ministry or whether I would remain in my job and offer myself for the non-stipendiary ministry. The latter seemed to appeal to my sense of caution and I remembered my mother's words when she had been against the idea of priesthood in the first place. Once again my former Vicar wrote to me and he gave a most definite opinion He felt that my gifts and talents should be employed in the full time ministry. I seemed to know that he was right. I had to take the plunge! I saw the Bishop of St. Asaph and I was selected as an ordinand of the Church in Wales.

More on the final path to Ordination next month.

Fr. Robert

## THANKS

### St George's Church, Great Bromley

Ann & Jenny send Blessings to you all and would like to say thank you for your understanding and support during the major building works at St. George's.

Also thank you to all who have helped with the weekly clean and setting up of the church so that life can continue as usual,

And thank you to all flower arrangers who helped to make the church look beautiful for our school children and Christmas Services.

Thank you.



## GT BROMLEY & DISTRICT CRICKET CLUB

### 100 Club Winners

#### November

- 1st. Mr. S. Wright
- 2nd. B. Fuller
- 3rd. Mr. Matt Halsey

#### December

- 1st. Mr. Matt Foley
- 2nd. Mr. Tony Lyon
- 3rd. Mr. George Kempster

# ST. GEORGE THE MARTYR, GREAT BROMLEY

united with St. Mary the Virgin, Ardleigh



## Church of England Services February

<b>Sunday 5th</b>	8.00am 10.30am 6.30pm	<b>3rd Sunday before Lent</b> Eucharist Parish Eucharist Evensong	<i>St. George the Martyr</i> <i>St. Mary the Virgin</i> <i>St. George the Martyr</i>
<b>Sunday 12th</b>	8.00am 10.30am 6.30pm	<b>2nd Sunday before Lent</b> Eucharist Parish Eucharist Evensong	<i>St. Mary the Virgin</i> <i>St. George the Martyr</i> <i>St. Mary the Virgin</i>
<b>Sunday 19th</b>	8.00am 10.30am	<b>Sunday next before Lent</b> Eucharist Parish Eucharist	<i>St. George the Martyr</i> <i>St. Mary the Virgin</i>
<b>Tuesday 21st</b>	6.30pm 7.30pm	<b>Shrove Tuesday</b> Launch of Christian Stewardship Campaign Launch of Christian Stewardship Campaign	<i>St. George the Martyr</i> <i>St. Mary the Virgin</i>
<b>Wednesday 22nd</b>	7.30pm	<b>Ash Wednesday - The First Day of Lent</b> Sung Eucharist with Imposition of Ashes	<i>St. George the Martyr</i>
<b>Sunday 26th</b>	8.00am 10.30am 6.30pm	<b>The First Sunday of Lent</b> Eucharist Parish Eucharist Evensong	<i>St. Mary the Virgin</i> <i>St. George the Martyr</i> <i>St. Mary the Virgin</i>

**Holy Communion** every Friday at 11.00am at Seven Rivers, Hall Road, Great Bromley.