



Easter Fun

Our Easter Celebration at St George's Church was well attended by many parents, relatives and friends of our children. Each class retold a part of the Easter Story through drama, art, reading and song. At the service we also said goodbye to Father Robert who is retiring very soon. We wish him every happiness in his retirement.

The children had great fun taking part in the Easter Egg Hunt followed by the Easter Fayre. Many thanks to all those who helped to organise these fantastic events.

150th Anniversary Ceramic Art Day

On Wednesday 17 April, a ceramic artist, Madelaine Murphy, will be working with every child to make our 150th celebration ceramic wall display. Every child will contribute to the art work by making a tile. This could involve mark making, inserting glass beads which will melt during the firing process and creating detailed texture. We are sure that they will have great fun! The ceramic art will be mounted on the wall in our reception area during the week of our anniversary celebrations.

See page 16 for photos and details of the new School Logo competition and who was the overall winner

THE FIRST PAGE

What a difference a few days make as I write this with the sun shining brightly. The temperature yesterday soared to a dizzying



19.8°C. I did some much needed gardening: the primroses look magnificent, the birds are singing and getting frisky, a peacock butterfly settled near me, a buzzard was mobbed quite spectacularly by some crows in the meadow and my bees, though smaller in numbers than they

should be, are alive with brood. So winter is losing its cold grip and spring is finally on its way.

Congratulations to Ida (p. 5) upon reaching 90. What an achievement. However, it is with sadness that we say farewell to the Rector, Robert Farrell, who is retiring and PCSO Les Barnes who has been transferred to Walton. We wish them well for the future.

Both parish councils have been busy looking after the affairs of our communities. Welcome to Laura who is now the Clerk to Lt Bromley parish council as well as Gt Bromley. Lt Bromley has,

among other things, reinstated the dog bin (p. 13) in Chequers Road but keep a look out for it as it is not the usual colour red.

The A120 junction (p. 7) was the reason for an Extraordinary meeting held in Gt Bromley village hall with our local MP, Bernard Jenkin, and various councillors attending along with the public. A motion was passed and it looks hopeful that a sensible solution will be found for the junction.

There are elections on 2nd May to vote for County Councillors. All those of you eligible to vote will by now have received your voting cards. So far I have received only one leaflet from a candidate. How we are expected to make an informed choice of councillor when we know nothing about them beats me!

As a result of the long winter there are some really bad potholes along the roads and lanes. These can be reported to Highways via the Tendring District Council website at <http://www.tendringdc.gov.uk/>. Just follow the link. A photograph of the pothole can also be uploaded on the site.

Leonie Henderson

MATERIAL for the **JUNE** edition of 'The Bromley Messenger' should reach the Editor, Leonie Henderson, by **14th MAY, 2013** please. Contributions from anonymous sources will not be printed. Whilst the editor welcomes contributions, photographs etc this is on the understanding that there is no obligation to publish, that the item may be edited and that there is no breach of copyright. Publication is in good faith and neither the editor nor the publisher accept any liability in respect of the content of any article, photo or advertisement, including any error or omission, responsibility for which remains with the author. Copy can either be delivered by hand, sent by post or e-mail. (see inside back cover for details) or via the link on the websites www.greatbromley.org.uk or www.littlebromley.org.uk

For details of availability and costs for **ADVERTISING** in the 'The Bromley Messenger' please contact the Treasurer on 01206 230537

Please support the sponsors of our magazine.

PLEASE SUPPORT OUR SPONSORS & ADVERTISERS



Primrose Pork

Free Range Pigs Outdoor Reared

Primrose Farm Open Day

25th May 10am-3pm

Come meet the pigs, make your own sausage, animal experience road show, chainsaw demonstration, many local farmers market stalls and much more!

Plus the launch of Hadley's ice creams to Primrose Farm

Primrose Farm, Hall Road, Great Bromley, Colchester, Essex CO7 7TR

Great for the kids but also the big kids!

For more information call Robert on 01206 230454/07860774729

www.primrosepork.co.uk

TAILS FROM PRIMROSE FARM

As May starts it is still very cold at night and hard frosts in the morning but sometimes the view over the field to Great Bromley Church is spectacular through the mist and rising sun. On the farm the pigs are still needing extra strawing up in the huts and extra food rations to keep warm. The feed prices are still climbing up here in the UK and on the world market. The caravan is using up so much gas hurry up spring please. My guider counter for spring is a hawthorn bush which turns a vibrant green overnight usually on 31st March but still no signs; everything seems to be held up this year. Tonight saw the first bright evening now the clocks have gone forward and Robert has gone back outside after tea to complete some digger work. The crop of winter wheat is struggling to break through the ground with the cold and wet.

Last week saw a sad story of a customer reporting to Robert of an injured barn owl on the road verge .Robert went and picked

it up and after talking to the RSPCA they recommended taking it to Wildlives at Thorrington. With daughter Hannah they wrapped the bird in a towel, made it comfortable before making a mad dash to Wildlives christening the owl, Percy, on the way. Unfortunately their mission of mercy was unsuccessful. The owl had a broken wing and was unable to be saved but they tried !!!.

The wildlife pond has attracted a tufted duck recently on its flight path.

The open day planning is taking shape, Pre-school are having a stall with children's activities, and back by popular demand son David is having his make-a-sausage stall so you can come and try your hand at sausage making. Any village organisation who would like to come and advertise or have a stall to raise funds are more than welcome please come and talk to Robert at the shop.

Karen Moss



Hearing Dogs for Deaf People

Hearing Dogs

Sue Orriss and Louise Brundell forged a

lifetime friendship when studying at Teacher Training College in London. This great friendship enabled the W.I. to enjoy a talk on Wednesday evening, entitled "Hearing Dogs"

Louise is now profoundly deaf and works hard for this charity, giving talks to organisations and raising money to support this very worthwhile cause.

Louise introduced her talk with an outline of the History and Development of this charity.

In 1976 Beatrice Wright heard about a scheme in America which enabled dogs to be trained to help deaf people. Together with Tony Blunt, Gillian Lacey, Bruce Fogel (yes that's Ben Fogel's father) they began in a small way, adopting a dog called Faber, a disused hut for training, and raising money along the way to fund development.

Deaf people at that time had to rely on "gadgets" – shake awake alarm clocks, flashing lights etc. etc. Why are dogs better than gadgets? Simply, they are welcoming, good company and enable deaf people to meet and communicate with other people in the community.

The charity has grown in strength through the years and now has a purpose built training headquarters in Buckinghamshire, purpose built training houses with individual flats where deaf people can stay whilst training.

It is law now that all notices on public buildings must welcome all assistance dogs. Guide Dogs, Hearing Dogs and others.

Training for Hearing Dogs is quite specific and when tested at the end of their training the dogs must achieve a 75% success in all areas of training which are *sound, *obedience *suitability * handling. Louise described in some detail each area of the dogs training, particular emphasis being placed on response to the sound of the telephone, front door bell, smoke alarm, monitors and timers.

Thirty years ago 75% of Hearing Dogs trained

were obtained from rescue centres – but now the charity has its own breeding scheme, although many may be donated or come from other breeding sources. In 2013 only 7% are rescue dogs. It was interesting to hear which breeds are most successful – Labrador, Retriever top the list- Spaniels, poodles and many small dogs (although it was thought at first any breed would do) Most important when choosing a dog is the temperament they must have the three "C's" - *curiosity *calmness *confidence.

Louise explained the process of training which the dog and the new owner have to go through, a very careful screening programme ensures that owner and dog are compatible. There is certain criteria for the deaf person too, she/he has to be severely profoundly deaf, they have to genuinely like dogs, they have to have a suitable house and a garden which is completely fenced and safe. Great care is taken to ensure the dog and person are well matched.

Before proper training can begin the puppies are socialised by "puppy walkers" in all areas of life experiences and at about 5 months old proper training can begin.

This process can be very expensive £45,000, and the waiting time for a dog is two years. Louise explained how we can help to raise money for this very worthy charity - we could:

- Socialise a hearing dog puppy
- Donate a puppy
- Volunteer to work in their shops or café
- Give talks – to promote "Hearing Dogs"
- Sponsorship
- Do a challenge for sponsorship
- Monthly donations
- Fund Raise
- Bequeath money in will

The motto for Hearing Dogs is "Companionship and Independence".

Thank you Louise for kindly sharing your knowledge and love of these super animals, such a worthy charity, thank you Sue for letting us share your friendship with a truly inspiring lady.

Louise have a safe trip back to Diss.

FRIENDSHIP CLUB

At the March meeting members were entertained by the Manningtree Afternooners who gave an excellent programme of popular music from the forties up to the present time. After their performance the group joined members for tea and cakes and judged the competition.



Lunch has been suggested at the Cross Inn for Tuesday 9th April when a new menu will be available offering a wide choice of meals.

The Flower list for the monthly meetings was discussed and offers were invited from members to add their names to this. Barbara Hall has agreed to do a flower arrangement for the forthcoming Flower Festival.

Donations of £10 and £25 have been sent to the Bromley Messenger and the East Anglian Children's Hospice respectively.

The Friendship Club has received a grant from the Parish Council.

The April Meeting has Fred on the Piano to entertain us, and the competition will be a spring flower.

Sylvia Ward

Would YOU like to join a

Badminton Club

in Great Bromley?

Purely for fun

to be held in Great Bromley Village Hall during the afternoon or early evening

Cost to cover the hire of the hall

If you are interested please contact

Kate Strowbridge tel: 01206 230211



IDA RUDD

90th BIRTHDAY

Ida Rudd

celebrated her 90th Birthday with her son, Simon, her family and close friends on 9th March.



Ida was born Ida Bloyce on 7th

March 1923 at Bush Farm, Gt Bromley and has lived in the village all her life. She followed with her sister, Ivy, four generations of the Bloyce family to the village school. She left school at 14 and went to work locally. During the war she started doing land work and met Freddie Rudd, also from Gt Bromley, when they were working at New House Farm and were married in September 1948. They moved into 2 Peace Cottages in November 1948 which has been her home ever since! As well as being taught at Gt Bromley school she became a dinner lady so is known by lots of local people.

Freddie died in 2005. They had two children, Roger and Simon.

Simon was taught bell ringing aged 11 by Arthur Cole, Vera Biddis' father. Simon was Tower Captain Gt Bromley. A Quarter Peal was played for Ida for her 90th Birthday as follows:

1296 Cambridge Surprise Minor

1, Lesley Barrell

2, Ros Keech

3, David Wenden

4, David Culham

5, David Sparling,

6, Simon Rudd (conductor)

Ida [Lulla] spent 30 years working for the Marshall family at Old Shields Farm and is very much part of the family and we look forward to celebrating many more birthdays with her!

GREAT BROMLEY PARISH COUNCIL

www.gbpc.org.uk

Our main news this month arises as a result of the proposed closures to the reservations on the A120. As a result of this the Parish Council called an Extraordinary meeting on 5th April which was well attended by members of the public and Bernard Jenkin MP. The Parish Council welcome the fact that the Highways Agency recognise that parts of the A120 constitute a danger to public safety, and we have been lobbying the Highways Agency about this for a long time. However, the Council does not see the proposals as a workable long-term solution. The Council's preferred approach is the use of appropriate speed cameras and a roundabout in the long-term. Many of you have been in touch with your views either individually or on behalf of your business located within the village. The effect on the local economy is of particular relevance, and therefore if you haven't been in touch you

are most welcome to. I will undertake to forward any such e-mails to our MP.

On the subject of local businesses, many have been kind enough to sponsor the flower tubs which will be distributed over the forthcoming weeks. There will be 9 village tubs in total. There is still time to sponsor a tub if anyone wishes to do so. The Parish Council are grateful to those who have done so thus far.

At the time of writing the Parish Council have been made aware that our PCSO, Les Barnes is being relocated elsewhere. PCSO Barnes has been a regular attendee at our meetings and has worked consistently on behalf of the village. He will be missed. His replacement will be allocated shortly and we look forward to welcoming him or her to the Village.

Laura Austin

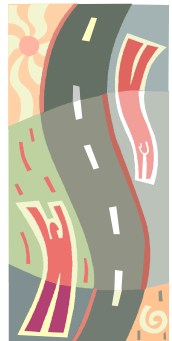
A120 JUNCTION

On Friday 5th April the Great Bromley Parish Council at an Extraordinary Meeting passed the following motion unanimously:-

“The Great Bromley Parish Council welcomes that the Highways Agency have recognised the danger of the junctions on the A120 and that they are proposing some actions to improve the safety at these junctions. It is the view of the parish council that a speed limit of 40mph be imposed and enforced by appropriate speed cameras and more applicable signage to clarify the junctions and their priorities. The parish council considers that the final solution to these junctions should be a roundabout, the

implementation of which should commence as soon as possible. The long term closure of the gaps is not acceptable.”

Dear Bernard,
Whilst the Great Bromley Parish Council recognises the sterling work of Tendring District Council and its members supported by Bernard Jenkin MP, and Essex County Council in keeping the issues around the A120 junctions with Harwich Road, Park Road and Bentley Road under review, this council must protest in the strongest terms possible at the latest



plans to close all of the central reservation cross overs. It is recognised that closing the cross overs will reduce accidents, however there are viable and deliverable alternative solutions which are equally capable of reducing the accident levels without disrupting the community.

The Highways Agency attempt to improve the junction by white paint and concrete traffic islands, themselves a hazard, has compounded the problems.

If the cross overs are closed the village of Great Bromley will effectively be divided and separated from the adjoining village of Little Bromley. Traffic, including school transport and emergency services, will only be able to access or move between the villages using lengthy detours on unsuited roads. The fragile local bus services would be put under serious strain and may be curtailed if their routes are disrupted.

Traffic, often large vehicles and HGV's, currently using the Harwich Road to transit between Elmstead Market and the eastern side of Colchester to Manningtree or Harwich will have lengthy detours down very minor roads and country lanes incapable of handling this traffic. The recent traffic survey showed that 5000 cars a day used the A120 with 2000 a day using the cross overs. It can be anticipated that the traffic diverting through Little Bentley and Tendring Heath will cause chaos through those villages.

Closing the crossovers will affect the local farming community, making it much more difficult to move machinery between land holdings either side of the A120, many of which are currently under

serious stress.

The impact on local businesses will be significant. There are over forty businesses in Great Bromley including building, plumbing, signwriting, chiropody, jewellery, clothing companies, a number of which operate on small margins relying on deliveries or visiting trade. The pub trade, which is already struggling, would be dealt a serious blow putting them at risk in the village and surrounding areas. There are also larger businesses such as Talisman Coaches and Selectacars which would also suffer a damaging blow to their ability to operate. A great many livelihoods will clearly be put at serious risk if the free movement of people and goods is disrupted.

The closure of these cross overs on the A120 will affect a great many communities within Tendring particularly the smaller rural ones struggling to thrive, communities as far away as Clacton, Walton, Frinton and Harwich will also be affected.

It is our view that the correct, immediate, action is to impose a 40mph speed limit, enforced by speed cameras and to rectify the dangerously misleading road markings which fail to indicate the correct priorities and poorly marked traffic islands. The junctions should be then be dealt with by providing a suitably designed traffic roundabout as a matter of utmost priority.

There are excellent examples of speed reductions, supported by cameras, effectively and significantly improving accident black spots such as the Haughley and Bacton crossovers near Stowmarket on the A14. The A120 near Coggeshall has had a significant and

measurable accident reduction following sensible speed reductions and clear signage.

The Highway Agency has recently decided to install average speed cameras on the A12 to manage similar problems also caused by poor road design.

The closing of the gaps or the 'do

nothing' option is not acceptable; something must be done now to improve the safety of this stretch of road in a manner which does not impact seriously on the long term viability of the local communities.

Yours sincerely
Alan Thomas, Chairman Gt Bromley Parish Council

S106 GRANT

Great Bromley Parish Council has learnt of its entitlement to an S106 (special planning document) grant. The sum of money, £11,849 must be spent on leisure provision within the village and so we are requesting suggestions for any suitable projects.

If you can think of any worthwhile leisure project that would improve the Village please contact the PC via Laura Austin, the Clerk@gbpc.org.uk.

The PC will discuss applications in either the June or July meeting and the most suitable project or projects will be put forward to Tendring DC.

Please note that the requirements for release of this grant are very specific and only those projects deemed by TDC to be of a suitable nature will be approved.

Cllr David Hardy

ESSEX POLICE



If you need to talk about any Police Community problems, or 101 ex 487607 (free phone)

Incidents in Great Bromley March

Nuisance Vehicle - Back Lane East - (Mini Moto)

Suspicious Circumstances

- Harwich Road - Youths In Shed In Back Garden Playing X Box

- Harwich Road - Knife Found

Burglary Other - Brook Street - St Georges School, Nothing Taken

Burglary Dwelling

- Chapel Lane

- Chase Road

RTC - Frating Road

It is with great sadness that I write to tell you that with effect from 15/04/2013 the authorities have decided to transfer me to Walton. The decision has been made by Ch Inspector Cat Barrie and Inspector Christopher Willis. I have expressed my disappointment that they are losing six years of Police Community work in the villages that I have covered.

Regards Les
PCSO LES BARNES 71909

LITTLE BROMLEY PARISH COUNCIL

We are pleased to announce that a new Clerk to Little Bromley has been appointed. Her name is Laura Austin who is also Great Bromley's Clerk. We felt she was the best candidate and hope it will enable both villages to work even closer together. Correspondence to her should be addressed c/o Brook House, Shop Road, Little Bromley CO11 2PZ.

A120 Junction

The chairman and I attended the extraordinary meeting of Gt Bromley Parish Council that was held on Friday 5th April which was attended by Bernard Jenkins MP to discuss the planned closure of the crossovers on the A120 which will cut our villages off.

Dog Bin

Big news is **"the dog bin is back"** in Chequers Road after a lot of unnecessary TDC interference. It is not, however, in the usual recognisable form of a red bin but a black plastic rubbish bin so please locate it and use it. I can't believe there was so much fuss created by



those above on such a trivial matter. There is still more work to be done to get another and some signs put up but the Council is working on that.

War Memorial

The War Memorial has finished being cleaned and is looking good but there still needs to be some work done on the base. An application was applied for to the War Memorial Trust for a grant but their decision came back saying they will only give a grant if we repair rather than replace the ground works and slabs so the Council will have to start looking round for builder who will take on the job of repair. Otherwise we will have to do some fund raising for a full refurbishment.

Village Speed Limit Signs

No news yet on the reduction speed limit signs in Shop Road/Church Road/Bentley Road. The Council writes to Highways regularly but the only answer received is that it is on their "to do" list. Hopefully we will get them soon and have some effect.

The date for the AGM and Parish

Assembly meeting will be announced soon. Our original date has had to be changed as the date was the same as the Council Elections. Meanwhile the next meeting of Lt Bromley Parish Council will be held on 18th July at The Haywain.

Flooding in Little Bromley

Thank you to all those people who returned the questionnaire about flooding in the Parish. The information provided has enabled the Parish Council to understand better where flooding occurs in the Parish.

The Council will be discussing with landowners and other parties how the situation can be improved to mitigate, if not remove, the risk of flooding in the village.

Owing to the confidential nature of the information received, details of flooding will not be published

REMINDER - please send back the superfast broadband cards that were included in the April Messenger, the more that are sent back the better chance we have of getting it.

I spent a few hours helping to organise the meeting where several villages met up and it would be a shame to let this pass by.

Bob Middleton, Acting Clerk

The Great British Fish & Chips Supper

supporting Spinal Injuries Association

Friday 17th May, 2013

To request a fundraising pack:

Call: 0845 0714350

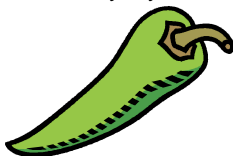
Email: fundraising@siafishandchips.co.uk

Visit: www.siafishandchips.co.uk

IN THE GARDEN WITH KATE

As I write, there is a glimmer of hope that spring might be coming, with an end to the hard frost, snow and nagging easterly winds. If, as predicted, it becomes warmer and wetter, the garden growth should accelerate, and do all the things that normally take two months in one. So be warned - get that lawnmower ready now!

Personally my seeds have languished in the heated propagator, unable to even start growing, which means that for tomatoes, chillis and aubergines, the season could be too short for them to ripen, but being the eternal optimist, I shall persevere.



However, May is the month to sow vegetable seeds such as cabbage, spinach and parsnip outside and to start frost sensitive crops such as courgettes, squash and sweet corn under glass.

The acceleration of growth includes, of course, weeds which in my garden almost double in size before the eyes. I have read that ground elder and nettles are delicious

to eat when young, so maybe this year I will try them and keep them under control at the same time. I just wish someone could find a use for goose grass and brambles!

Hanging baskets and tubs can be planted up and kept in an unheated greenhouse or light shed till the dangers of frosts are past at the end of the month, and tender annuals, once hardened off, can go out too.

Don't forget that our local nurseries have a good selection of plug plants which can be potted on at home prior to planting out.

Finally, a large selection of plants will be on sale at the Plant and Garage Sale at Ilex farm on Saturday 10th May at 10am. The plants are always of excellent quality, and personally, unless my pesky tomatoes start growing soon, I will certainly be buying some at the sale.

The good news is that with the wet summer last year and a cold winter, predictions are that the fruit trees and bushes should be providing us with a bumper crop.

Happy Gardening!

Kate Strowbridge

KITCHEN CORNER

This is the time of year when I try to use up any fruits I have left in the freezer, before the soft fruits start again. There is plenty of good rhubarb now and I find a quick way to make use of this is to chop the rhubarb fairly small, put some sugar and water in a pan and bring to the boil. Tip in the rhubarb and bring back to the boil. Cover and simmer a minute or two then leave to stand until softened.

Pour this over the frozen raspberries or other fruit, and leave to cool. If you are making a pie or crumble, no need to pre-cook the rhubarb

Another favourite of ours is a strawberry

trifle. Sponge pieces in the dish, moistened with juice or sherry, frozen fruit on top then hot custard poured over, This way the fruit thaws without losing its shape.

Finish with whipped cream. A simple fruit fool can be made with rhubarb. Chop it small, cook in the oven with sugar, or stew briefly, making sure it is not mushy. Strain through a sieve before folding into whipped cream (or fromage fraise)

Jill Frostick



ON THE BUSES WITH SAGE'S, VINE'S ET CETERA

In the 1960s I took the school bus to S. Georges, although I often walked home the mile and a bit to Balls Green as it was quicker than winding through all the lanes. The bus would stop right outside everyone's house and wait if frantic scrabbling was observed within! Mr Walter Seaborne was the able driver, I can still see him, with his old trilby hat, turning the wheel on some of the tighter manoeuvres; I don't remember him always being terribly cheerful when we children made an overexcited din, but he was kind hearted.

I used to idly wonder why there were so many bus companies that serviced our little villages; various people, in telling me tales, would refer to Vine's, Sage's, Best's and so on. On investigation I soon found that there was only the one service that changed ownership and name over the years. (One of my sources suggests that perhaps the route was not very profitable if it kept changing hands?) It was very easy to find out as much information as I needed for an article or two thanks to the generosity of a number of bus enthusiasts, most notably Nigel Turner from Braintree.

Charles James William Sage from Suffolk was originally in business at Frating around 1925. Around 1930 he built a new bus depot and neighbouring bungalow, the garage being extended around 1939. This bus depot was where Frating Road turns into Bromley Road, just round the snake in the road past the old shop where the Crossways Centre is nowadays.

Sage obtained a licence from Colchester Borough Council for a 14-seater bus on 6th March 1929 and started Sage's Bus Service from Gt. Bromley Church to Colchester via Frating and Elmstead. After a few months the route was altered to operate Balls Green via the Church, Bromley Cross, Burnt Heath and Crockleford to Colchester, presumably because he moved into his new garage. Initially being weekdays only, a Sunday service was added in 1932. As well as the Colchester service, over the years there was excursion and private hire work including some post-war forces leave services from Hyderabad Barracks and of course the local school bus run.

The business passed to his widow Eveline Kate Sage and their sons in 1951 and then to James Best trading as J. D. Best & Son in 1952. In 1960 Ronald Lewis George Catt & Robert Cecil Swinn from London acquired the business and traded as Best's Coaches. In 1964 it passed to Frank Walter Vine of Weeley who was already in business and had traded as Vine's Luxury Coaches since about 1951. The current name of the bungalow "Junedene" is apparently derived from the names of F.W.Vine's children.

The route was taken over by Ray James, an ex Eastern National driver & proprietor of a minibus and taxi business at Harwich, but he ceased operations a year later in 1973, following which the route service 79 was taken over by Eastern National and Hedingham & District. At that time the premises were sold to become Crossways and the omnibus fleet disbanded.

The vehicles always had a red and cream livery, Vines taking it to more of a maroon and adding grey.

I would love to hear anyone's memories of taking the school bus or the service operators over the years. I would also like to find out more about Mr Seaborne, who also ran the Black Boy Garage. Please don't be shy to get in contact! Email web@greatbromley.org.uk

There is a picture of the old bus depot taken in the mid 60s, overleaf.

©Hugh Frostick 2013

With sincere thanks to Alistair Douglas for his photo, and to my sources: Nigel Turner, Peter Clark, Richard Delahoy, Dick Gilbert, and some facts from E.G. Axten's "History of Public Transport in the Colchester Area"



Vines Bus Station in March 1965

© Alistair Douglas, reproduced with kind permission

2013 EVENTS

MAY

- 1 WI meeting, AGM, Village Hall, 7.30pm
- 5 Bluebell Service, Lt Bentley Hall Woods, 2.30pm
- 8 Gt Bromley Parish Council meeting, Village Hall, 7.30pm
- 11 Car Boot Sale, Seven Rivers Cheshire Home, 8.00am
Plant & Garage Sale, Ilex Farm, 10.00am
- 16 Friendship Club meeting, Village Hall, 2.00pm
- 18 Annual Meeting, Lt Bromley church, 3.00pm
- 31 Patchwork Messy Church, Village Hall, 10.00am

JUNE

- 1-2 Little Bentley Hall Waterways and Garden Show
- 5 WI meeting, Village Hall, 7.30pm
- 8 Social Coffee Morning, Lt Bromley church, 10.30am
- 12 Gt Bromley Parish Council meeting, Village Hall, 7.30pm
- 22 5th Local Producers' Market, Lawford CofE Primary School's summer fair 11.30am - 2:30pm
- 28-30 Flower Festival, St George's church
Scarecrow Festival & Little Bromley in Bloom
- 30 Summer Fayre, Seven Rivers Cheshire Home, 1.30pm
- tba Race Night, Village Hall



JULY

- 3 WI meeting, Village Hall, 7.30pm
- 10 Gt Bromley Parish Council meeting, Village Hall, 7.30pm
- 18 Lt Bromley Parish Council meeting, The Haywain, 7.30pm
- 20-21 Art Show Weekend, Lt Bromley church
- 27 Rock & Roll Night, Little Bromley

AUGUST

- 7 WI meeting, Village Hall, 7.30pm
- 14 Gt Bromley Parish Council meeting, Village Hall, 7.30pm
- 17 Folk/Music Day, Lt Bromley church
- 31 End of Summer Ball, Village Hall

End of Summer Ball

Saturday, 31st August
Great Bromley Village Hall
to raise funds for the improvement of the
Great Bromley Village Hall.



There will be a live band and
a fish and chips or chicken
and chips supper included in
the price of the tickets.
Details to be finalised but
please put date in your diary.
More details next month

VILLAGE HALL Events

mid June	Race Night
19th October	A Visiting Play

Friends of Little Bromley Church

Coming Events

8 June	Social Coffee Morning, 10.30am
20/21 July	Art Show Weekend
17 August	Folk/Music Day
6 October	Harvest service
21 December	Carol Service 3.00pm

Plant & Garage Sale

at Ilex Farm, Waterhouse Lane, Ardleigh
on 11th May 10.00am - 1.00pm

Proceeds to

St George's School, Gt Bromley PTA and
St Michael's church, Thorpe-le-Soken
Plants and anything for the Garage Sale
(no books/clothes) gratefully received on or
before 10th May

Further details tel: 01206 230679

Leonard
Cheshire
Disability

SEVEN RIVERS CHESHIRE
HOME

Hall Road, Great Bromley

CAR BOOT SALE

Saturday 11th May

Opens 8.00am £10 per car

Refreshments available

Please contact Pauline

Melton on 01206 230345 to

book your pitch or just come on the day.



Registered Charity No 218186

Donations of £1.00 per child
(Accompanying adults free)



Patchwork Messy church

at **Messy Church!**

Come and have some family time,
some messy fun and a light lunch

on **Friday 31st May,**

10.00am – 12.30pm,

At **Great Bromley Village Hall**

All Welcome!

For more information please contact :

Carol Cordwell: 01206 395103



Seven Rivers Residential Care Home Summer Fayre

Sunday 30th June From

1.30pm

BE THERE!

The Friends of Little Bromley Church
It is that time of year again!

Our **Annual Meeting** is being held on
Saturday 18th May

Refreshments will be served 3-4pm

Meeting commencing at 4.00pm

All are welcome – be assured of a warm
welcome.

Rock and Roll Night Saturday 27th July Little Bromley

A local rock and roll group - Foxy Rock - will be hosting an evening of dance - and giving lessons on how to jive etc - Hot buffet will be provided for a ticket price (to be decided)



WATCH OUT FOR THE SCARECROWS!

Little & Great Bromley are
preparing for our Third
Scarecrow Festival

The theme is

A Character from a Children's Book
to complement the Great Bromley Flower
Festival and Little Bromley In Bloom
Weekend of 28th, 29th & 30th June

Next month we will let you know where you
can get your Entry Forms to take part in the
competition for only a £1 donation toward
the P.C.C.

If you can't wait for more information phone
Carol on 01206 395103

Little Bromley in Bloom

Open to anyone living in Little
Bromley - enter your garden in
our Village Competition. All
entries will be judged and the
competition is open to gardens
great or small - we're looking for
bloom and colour - use your
green fingers to make our

Village look more beautiful.

Entry is £1.00

Entry forms will be available at The Haywain,
Little Bromley and Harlequin, Little Bromley.

Judging will take place to coincide with the
Scarecrow festival on 28th, 29th and 30th June.
This event is being sponsored by Heart's Delight
who are kindly giving £50 Garden Vouchers to
the winner. Email Amenitiesgroup@gmail.com
for more details.





VILLAGE HALL TRUSTEES

By the time you are reading this the Village Hall AGM has happened

and we will have the new committee in place. We will also have our new Chairman.

However, at this time, I am unable to tell you who that is going to be. Last month I wrote that apart from Fred, our present Chairman, all the committee was standing again. This is no longer the case with Pip Allam standing down as the Cricket Club representative but Richard Lawson has agreed to stand in his place.

A Race Night is now happening in mid June, sponsors can still book their races for £20 and horses can be bought for £5. More details to follow soon but please talk to Filipe soon as the races were sponsored very quickly last

the W.I. The loss of the Playgroup has resulted in us having spare capacity so if you are thinking of a party, a celebration or any event please check out our Village Hall. Over the last few years it has been upgraded to one of the better halls in the area with the exterior painting, new kitchen, new toilets, interior painting, floors sealed, new cleaning regime, new heating controls and a large de-clutter. Details of the Hall are on the web site or if you have not been down to the hall recently why not take a look and see if we can help you. Our prices are very competitive and if you are a resident of our village you will get a discount. Mary Fawcett is in charge of our booking and her details are on the inside page of The Bromley Messenger.

We are still looking for someone. Someone who wants to help, someone who cares about the future of the Village, someone to work on the marketing of our Village Hall. We have a great Hall and we need someone who is willing to be co-opted onto the committee who would help us sell our Village Hall to prospective users. Who would like to help?

The next write up will have the news from the AGM and details of the new committee.

That's all for now. As always, thank you for your support. Let's all make the most of Great Bromley Village Hall in 2013 and let's start to look forward to warmer weather

Next meeting directly after the AGM Wednesday 24th April at **8:30pm**. As always all welcome.

David Beech

time. Mary is still looking at a Murder Mystery Night which I am looking forward to. I am looking into Film Nights and have had some great help from Kate who has lead me to the correct spot so as to set this up, The first of the Visiting Plays is booked for October 19th.

A number of groups in our Village use the Hall to hold their functions from the Cricket Club to



GREAT BROMLEY POST OFFICE at The Cross Inn

Ardleigh Road, Great Bromley CO7 7TL

Telephone: 01206 231073

Mon/Tues: 9.30am-2.00pm Wed/Thurs/Fri: 10.00am - 2.00pm

Sat: 9.00am-midday

- Please note that there is now a wide selection of cards and wrapping paper available.
- A dry cleaning service is also available.

Please ask for details at the counter.

CHILDREN'S PAGE

Make a Tulip Fridge Magnet

You will need:

Polymer clay in green, and either red, yellow or orange and a contrasting colour

Magnet

Strong glue

Instructions:

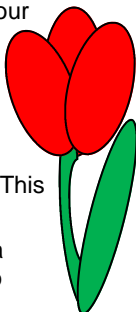
From red, orange or yellow polymer clay, shape an egg shape. Trim the top into points. This is your tulip.

Roll out the green clay to form a stem and leaves, and press into place.

If you want to personalise it make a sausage shape and shape into an initial. Press it onto the tulip.

Ask an adult to bake your tulip in the oven according to the manufacturer's instructions.

Glue a magnet onto the back.



Make a Daffodil Fridge Magnet

You will need:

Yellow coloured fimo or other

polymer clay

Magnet

Strong glue

Instructions:

Shape six petals from your yellow clay and press together to make the base of your flower. Make a cone from orange clay.

Press the point of the cone into the centre of the flower. Press in the centre of the base of the cone and flute around the edges to make your 'trumpet'.

Bake the clay according to the manufacturer's instructions.

Using strong glue (and with an adults help) glue the magnet to the back of your flower.



ST. GEORGE'S (C OF E) SCHOOL, GT. BROMLEY

Head teacher: Julie O'Mara

Telephone: 01206 230305

School Logo Competition

We were delighted to receive entries from our children for our School Logo competition. It was a pleasure to see how much thought and work went into the designs. A panel of three: an ex pupil and graphic designer - Matthew Calderbank, Mrs Grant - school Governor and Mrs O'Mara finally decided, after an hour and a half of deliberation, an overall winning design. A winner was chosen from each class and the overall winning design will be sent to a graphic designer to be made into our new school logo. Every child who entered was presented with an Easter egg at our celebration assembly. Many congratulations to Scarlett from Class 2 who had the overall winning design.





Little Dragons Pre-School

Great Bromley & Frating

Ofsted Inspected

Website: www.littledragonspreschool.org

Email: littledragonspreschool@gmail.com

Church Meadow Bungalow, Hall Road, Great Bromley CO7 7TR
Children 2-5 years. Monday – Friday 9am- 3.30pm (extended session available until 4.00pm)
Breakfast club for preschool age 8.00am -9.00am
Breakfast club for St George's children 8.00am-8.45am (and a walking bus to school)
After school club for St George's children 3.00pm – 5.30pm
For more details/ visits please contact us on 0785 7503103

Last term the children enjoyed exploring the surrounding environment despite the inclement weather. The snow and cold provided opportunities for related activities and watching the seasons change.

As we start our Summer Term we are looking forward to some warmer weather and enjoying our new outdoor space. We have lots of activities and projects planned including planting vegetables and flowers, making a pond and woodpile to attract wildlife and mini-beasts to name but a few.

'After School Club'

Opening times Mon- Fri 3.00pm-5.30pm.
Aged 2-11 years

A flexible collection service from St. Georges School will be available from 3pm. This will include the collection of children from any after school activity that takes place after 3pm.

Fee: £2.20 per 30 mins

Breakfast Club (see times above)

Children can choose from a range of healthy foods, including fresh fruit, yoghurts, cereal, toast and fresh juices. From £3.90.

Just a reminder that we are collecting the vouchers from Sainsbury's, so please tell family and friends. There is some great equipment to be had so please get collecting!

We take children from the age of two years and offer a 'home visit' to families of children prior to them starting Pre-school. This gives the child the opportunity to meet their key-person in their own home, aiding the transition stage to pre-school. It also enables us to collect and share information

in a confidential environment.

For further information or to arrange a visit to the setting please contact us on the above number.

Dates for your diary:

Monday 6th May Bank Holiday

Mon 27th to Fri 31st May Half Term

Monday 3rd June Pre-school re-opens

THANKS

A huge Thank You to everyone for the cards and messages of encouragement after my recent accident.

I am now recovering well.

June Wenden



BLUEBELL SERVICE

in Little Bentley Hall Woods
on Sunday 5th May.

Meet at Church for Direction at 2.30pm.
Service at 3pm.

Do come and join us in Little Bentley Woods for this wonderful service with Nature. Dogs, Horses, Children everyone welcome.



LITTLE BROMLEY AMENITIES GROUP

The Amenities Group of Little Bromley are entering a team for **Race for Life** to be held at Castle Park Colchester on 21st July - come along and join us. You can run, walk, crawl anything you want to raise money for breast cancer. Arriving at park 10 a.m. - race at 11 am. Email Amenitiesgroup@gmail.com to find out details to enter.

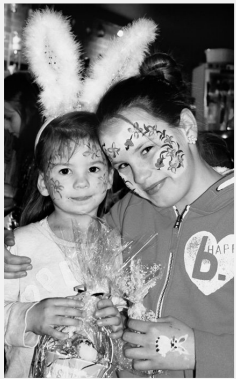


Little Bromley Easter Egg Hunt

On 29th March the Amenities Group held their first ever Easter Egg Hunt at The Haywain. We were a bit apprehensive whether anyone would turn up as there were other events on the same date but we needn't have worried as the doors opened at 2pm and 44 children came in with their parents for an afternoon of fun.

Thank you to everyone who came along and supported the event and for all the donations on the day. We will definitely be holding another one!

*Chairman
Little Bromley Amenities Committee*



It started off with the children making baskets to put the egg tokens in and then at about 2.30pm we went up to the end of the car park and set the children off on the hunt! Congratulations to Kyle Longhorn who found the most tokens and got an extra prize. We also had the

Easter Bunny who had hidden in the car park. Congratulations to Abbie Westwood who found him and also got an extra prize.

After the egg hunt we had Easter cakes and games.



Run For It!!

"Ah, Kate – just the person I need to talk to!" said Mistress Melton. "We need to raise some money – and you are our new Activities Organiser so what do you suggest - any ideas?"

"Well, actually, I thought I might do a sponsored walk." Came the reply. "What do you think, Mistress Melton?"

"Walk? WALK??!?" mouthed MM, "Oh no, I don't think so – I think you'll raise much more if you do a run instead of a walk. I know, there's the Colchester Half Marathon coming up soon – if you start training now



you'll be fit just in time, won't you? And it is only a *half* marathon – why that's little more than a walk in the park, isn't it?

"Right, off you go and get training. I'd come with you, of course I would, only I've got this bone in me foot and you know what that's like – especially at my age!"

And so, on the very first day of the New Year, the brave Kate set off on the first of her many training runs. Come rain, wind or shine she was out there getting herself into shape. She had never done anything like this before but she was determined to give it her best shot and run every inch of the

way - that'd show her!

True to her word, our Kate stuck to her training regime through all that horrible, cold weather to be ready for the big day. Soon, she was joined by her sister and having someone to share the agony and the ecstasy with made it much more fun.

And so the day came. There they were at the start line – not just Kate and her sister, but Kate's partner, too - all toggged up in the "latest designer running gear"- and they did run *all* the way. Not once did they stop! On and on they ran. Even the dreaded North Hill did not beat them - they ran all the way up that too!

Now, have you ever tried to drink water from a paper cup whilst running at full tilt? It's not easy, I can tell you, especially when your "designer running gear" is a leprechaun outfit (see picture)!!

Up hills and down dales, all around the twisty lanes they ran until, at last, the end was in sight. Then came the grand finish - a mad sprint home to cross the line at full pelt!

Great stuff Kate, Mary and Duane - many thanks for all your commitment and hard work. Many, many thanks, too, for the £781 that you raised, which will be spent on something special for the residents.

Colin File
Volunteer Newsletter Editor

GT BROMLEY & DISTRICT CRICKET CLUB

100 Club Winners for March

- 1st. Mr. Brian Smith
- 2nd. Mrs. Pam Wright
- 3rd. Thomas Hardy



THE DOCTORS' SURGERY NEWS

Gt Bentley Surgery

The Chancellor giveth and the Chancellor taketh away. Beer might be down by a penny in the budget – and the proposed increase in duty cancelled – but I'm afraid that prescription charges went up by 20 pence to £7.85 per item from 1st April. Dare I say that the government's priorities seem slightly odd?

There is, however, some good news to go with this. The charges for Prescription Pre-payment Certificates, which benefit anyone who needs more than 4 items in three months or 14 items in one year, have been frozen. They remain at £29.10 for three months and £104.00 for a full year and can be paid by debit or credit card or, for an annual certificate by direct debit over ten months.

If you would like to apply for a Pre-payment Certificate you can do it by telephone on 0300 330 1341, or on the internet at <http://www.nhsbsa.nhs.uk/healthcosts/2131.aspx>. (I hope that this link works okay as the last one I put in Surgery News didn't for some patients.)

I'm sure that a lot of people will have been alarmed by recent reports of measles epidemics around Swansea and Middlesbrough. They have left hundreds of children very ill, with quite a few needing hospital treatment. Parents being put off the MMR vaccine a few years ago by totally false stories of risks associated with it, has led to many children being left unprotected against this horrible disease which can cause brain damage and even death. Families in those areas are now having to cope with the consequences.

If your children haven't had the MMR jab – for whatever reason –**please** reconsider the situation now before it is too late. Contact your surgery and make an appointment to get them protected. You could save your children and yourself a lot of distress and will probably help to prevent a very nasty epidemic in north east Essex.

Here at the surgery we are trying to get to grips with all the changes to Primary Care (which is our particular bit of the NHS), that came into effect from 1st April. Primary Care Trusts (PCTs) have been abolished and their functions taken over by a veritable list of



organisations – the NHS Commissioning Board (the name of which has already been changed to “NHS England”), North East Essex Clinical Commissioning Group, the NHS Commissioning Support Unit, the NHS Property Company – even Essex County Council's Public Health Department gets in on the act. As you can probably guess, working out whom we answer to, and who to ask for help with for various parts of our work now is causing some head-scratching. I suppose that the dust will settle soon but for the time being, just have a go at working out how many NHS employees it takes to get you treated in hospital, let alone to change a light bulb. I reckon you'll need a calculator.

Going back to the subject of jabs for a moment, summer is coming – allegedly, at least – and some people's thoughts will no doubt be turning to holidays abroad. Please don't forget that if you opt for a holiday that requires you to have travel immunisations you need to get them done in good time to ensure that your immunity to various exotic nasties has kicked in before you travel. For some jabs, this can take a few weeks, so don't leave it until the last minute. Immediately you know where you are going, if you contact us one of our nurses will work out what you need and when to have it. If you happen to get a fantastic last minute deal, which means that you should have jabs but are told that they won't take effect in time to protect you, please don't shoot the messenger. It's worth checking with your travel agent what health risks you might be taking before handing over your cash for that dream back-packing holiday leaving tomorrow for somewhere remote in the Far East.

The other thing to bear in mind is that malaria tablets and many travel vaccines don't come free on the NHS. They are private services which have to be paid for. Again, please don't blame us for that as we don't write the rule books. (Who does, since all the changes, I wonder?) We will let you know how much your jabs etc will cost and if they are expensive, might ask for payment in advance. For some holidays these hidden extras might come to hundreds of pounds, so you do need to budget for them.

Anyway, have fun planning your holiday, wherever it's going to be. I've always wanted to go to Burma.

Hugh Cronin
Practice Manager, Great Bentley Surgery



April 5th 2013

NEWS RELEASE...

Vital health information for Tendring, including Clacton & Harwich minor injury units

This week a helpful "Citizens Guide" to local services has been delivered to homes in Tendring district. Unfortunately, some of the key health information is missing. Please add this to your Guide, perhaps by cutting this information out and attaching it to page 18 of the Guide?

For minor injuries:

Clacton Minor Injury Unit, Clacton Hospital, Tower Road, telephone 01255 201594:

Nurse-led service providing treatment for minor injuries, e.g. cuts, sprains and fractures. Open from 9am until 9pm including x-ray facilities. and

Harwich Minor Injury Unit, Fryatt Hospital, Main Road, Dovercourt, telephone 01255

201226: Nurse-led service providing treatment for minor injuries, e.g. cuts, sprains and fractures. Open from 9am until 5pm (x-ray opening times 08.45am to 12.30pm Monday to Friday) as well as the

North Colchester Healthcare Centre (incorporating the walk-in centre),

Colchester Primary Care Centre, Turner Road, Colchester, telephone 01206 314015:

GP-led service providing treatment for minor injuries and illnesses, no appointment necessary. Please note that as there are no x-ray facilities on site they cannot treat suspected fractures. Open from 7am until 10pm.

Dr. Shane Gordon, a local GP and leader of North East Essex Clinical Commissioning Group, said:

"If you don't have an emergency, critical or life-threatening problem, then please use these alternatives to Colchester Hospital. Patient's that attend A&E with non-urgent problems can cause delays in the service, increasing waiting times for patients that who need more urgent attention.

Please consider these ways of getting treatment faster, in addition to the minor injury units :

"Treat yourself for simple illness and minor cuts, sprains and burns. Keep simple

painkillers and cough remedies in a safe place at home and have a first aid kit handy.



North East Essex
Clinical Commissioning Group

"Ask your local pharmacist for advice on minor illness. They can provide expert advice and simple treatments.

"Call NHS Direct 24 hours a day on 0845 4647. (This service is changing shortly to NHS 111 so that probably by the end of April, to call the NHS phone advice and information service, you should dial 111 please see further information in your local newspapers shortly). Their specialist nurses can provide clinical assessment and advice.

"Call your GP surgery or Out of Hours GPs 0845 602 5215 until the end of April when this will change to 111.

"The accident and emergency department at Colchester General Hospital in Turner Road should only be used for critical or life-threatening situations requiring medical attention, such as loss of consciousness, heavy blood loss, suspected broken bones, persistent chest pain, difficulty breathing, overdoses, ingestion or poisoning," added Dr Gordon.

The Guide also lists the North East Essex Primary Care Trust. This has been replaced by the North East Essex Clinical Commissioning Group, based at the Primary Care Centre, Turner Road Colchester CO4 5JR

Tel 01206 286 500

Fax 01206 286 710

Email neessexccg.enquiries@nhs.net

web www.neessexccg.nhs.uk

You can find all your local health services on the website www.nhs.uk or by phoning NHS Direct on 0845 4647. (This service is changing shortly to NHS 111 so that probably by the end of April, to call the NHS phone advice and information service, you should dial 111 please see further information in your local newspapers shortly).

THANKS

I write to say what a great experience I had in the Easter Holidays with my granddaughters.

On Tuesday morning 2nd April I took them to "Messy Church" in Ardleigh Village Hall, they had been before, I had not. We arrived at 10 am, were offered tea and coffee and biscuits for the grownups and squash for the girls.

The children sat down on chairs or mats and had a talk given by Carol Cordwell on Easter and its meaning.

They then had six different craft activities to make: Easter Garlands, Eggs and Chicks, decorating Easter Biscuits and other exciting crafts organised by Jill Nicholls, all manned by helpers, after which they sat down again to hear Ruth Lawson read an Easter prayer they had all written on Easter

Egg Cards. While this was happening the most amazing amount of party food was put out by Yvonne Cobbold and other helpers. Tables were set with rabbit napkins, plates and cups, the children then enjoyed the lunch with Easter Cake and Hot Cross Buns to finish.

It was so well organised, well done to everyone.

All this was for **£1.00** per head for the children and no charge for the grownups, how amazing is that !!

So thank you to all who gave their time to give the children a great experience in the Easter Holidays.

I understand there is another one on 31st May in Bromley Village Hall.

Linda Pinhey

Over the last weekend in June we will be holding the

Great Bromley Flower Festival

Theme: Children's Books

If you would like to contribute to this event, you can do so, perhaps by donating a **raffle / tombola prize** or you might like to **sponsor some flowers**.



A list of all sponsors will be on display in St. George's Church over the Festival weekend. If you would like to help at this event or would like to make a donation, please contact Carol Cordwell on 01206 395103.

FOOTPATHS

Please note that I am on holiday during May which is when the Parish Footpaths will be 'blossoming' in all directions. If you wish to report any particular problem, do leave a message with the dog/house sitter and I'll make that my priority when I get back. If there is



something urgent that cannot await my return, you can report on the Essex County Council website - the links are easy to follow. Thank you.

Friends of Elmstead Church Art Exhibition
15th and 16th June in Elmstead Church

Pictures for sale at reasonable prices by Essex artists
Saturday 10.30am-5.30pm Sunday 12 noon-5.30pm

Ploughman lunches. Tea and coffee Books and home made cakes for sale

CHURCH JOTTINGS

Sunday April 14th marked a new era in the life and times of St. George's Church, Great Bromley. Fr. Robert Farrell, retired leaving our church and the Benefice in what is called an "Interregnum"

Fr. Robert was inducted to the Benefice on 14th November 2008. His previous parish was at St Augustine's, Leigh-on-Sea.

The road has not always been easy for Fr. Robert here in the Benefice of Ardleigh and the Bromley's - but - the congregation and community of both villages had become very fond of our Rector working together to support and encourage when necessary.

We were very pleased that Fr. Robert was happy to work alongside his female colleagues and indeed Gill Moore was ordained whilst working in the Benefice with Fr. Robert (It was not always the case as female priests were not allowed to work here).

We have shared many happy times with Fr. Robert; he has shown to those who know him well a keen sense of humour and fun. He has showed admirable tolerance of others and their views and beliefs when times were difficult and tough. He always readily listened, supported and understood, having endured (when Adam was young) such difficulties himself.

We shall be sorry to lose this gentle man, we shall miss his knowledge, his kindness and most of all his friendship.

Fr. Robert has retired to his house in Kent to pursue his interest in foreign travel and holidays.

For the time being if you need a priest please phone 01255 502033 and speak to Peter Mann our Rural Dean, or telephone Ann Fairley 250229 or Jenny 230688.

MESSY CHURCH - NEW LIFE EGGSTRAVAGANZA

On Tuesday 2nd April we held our Messy Church morning in Ardleigh Village Hall. We were pleased to see around 38 children of mixed ages along with their families.

We began with a short reminder of the Easter story and the excitement of New Life that follows. I also believe that chocolate Easter eggs were mentioned! The children were then sent off to take part in 5 craft activities related to our topic. Some used the playdough or played with the toys in the corner between crafts. When all the activities were exhausted, the children got together again for a song and short prayer time. Father Robert was presented with an Easter egg as a thank you for all his help at Messy Church.

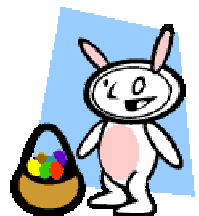
Finally we all assembled to have a light lunch together before departing. It was lovely to see so many people, some regular

faces and some new ones having a fun, relaxed time. We also welcomed some new helpers to make the morning even better. It didn't take long to clear away as so many parents helped, that even this was easy.

We would like to thank all those who helped and all those who came along to take part in our Eggstravaganza event for making it such an enjoyable and friendly time.

If you think you would like to come along, our next one is Patchwork Messy Church on Friday 31st May at Great Bromley Village hall. Everyone is very welcome.

Carol Cordwell



ST. GEORGE THE MARTYR, GREAT BROM-



Church of England Services

May

Sunday 5th	8.00am	6th Sunday of Easter Eucharist Parish Eucharist <i>Rogation details on Pew Sheet in church</i>	Rogation Sunday <i>St. George the Martyr</i> <i>St. Mary the Virgin</i>
	10.30am		
	6.30pm	<i>St. George the Martyr</i>	
Thursday 9th	7.30pm	Ascension Day Sung Eucharist - <i>incense will be used</i>	<i>St. Mary the Virgin</i>
Sunday 12th	8.00am	7th Sunday of Easter Eucharist The Parish Eucharist Evensong	<i>St. Mary the Virgin</i>
	10.30am		<i>St. George the Martyr</i>
	6.30pm		<i>St. Mary the Virgin</i>
Sunday 19th	8.00am	Day of Pentecost Eucharist Parish Eucharist Evening Deanery Pentecost Service <i>Details on Pew Sheet in church</i>	<i>St. George the Martyr</i>
	10.30am		<i>St. Mary the Virgin</i> <i>Church of St Nicholas, Harwich</i>
Sunday 26th	8.00am	Trinity Sunday Eucharist The Parish Eucharist Evensong	<i>St. Mary the Virgin</i>
	10.30am		<i>St. George the Martyr</i>
	6.30pm		<i>St. Mary the Virgin</i>

Holy Communion every Friday at 11.00am at Seven Rivers, Hall Road, Great Bromley.