

# THE BROMLEY MESSENGER

*August 2015*



## SCARECROW FESTIVAL

Councillor Carlo Guiglielmi presenting Eve Barnham with her prize for winning the Scarecrow Competition with her snowboarding scarecrow.

For full report and more photographs inside



# THE FIRST PAGE

This issue reflects in both words and pictures sent in by you, the variety of events that have been going on in both villages during the last month and on behalf of you all The Bromley Messenger thanks all those who have put so much time and effort into making these occasions successful and such fun. However, as readers of the Messenger know, this is not an isolated month as month on month, year on year committees are set up and run by your friends, family and neighbours to entertain, educate or exercise us in various ways during the days, the evenings and sometimes whole weekends throughout the year. Thank you.

With that in mind, looking at the Diary of Events in the centre pages, we have much to look forward to again this coming month and into the autumn. While we have this amazing warm weather (my garden does need some rain but perhaps, like Camelot, only at night) I expect many of you will also be heading to the beach here or further afield as well as doing many other different activities as part of the summer holidays.

Personally I have been out on a couple of 'spot the bat' evening walks. The bats, though, on both occasions have been shy and at a detector being switched on have seemed to promptly go into hiding. Why

don't I just stay at home and watch them circle my house?! More success was had in a fairly local wood (just over the border into Suffolk) where I went purple emperor butterfly hunting. Flying high in the trees they were magnificent. So exciting, I had never seen one before. We also saw purple hairstreaks, small coppers and ringlets as well as the more usual butterflies and some birds that we do not have around here.



This morning, whilst walking the dog in the sun, the marvellous warm scent of freshly cut fields of corn made me think how lucky we are to live where we do and really it doesn't matter whether or not you see what you hoped to see on any particular occasion when we have all that we need on our doorstep.

Happy holidays.

*Leonie*

**MATERIAL** for the **SEPTEMBER** edition of 'The Bromley Messenger' should reach the Editor, Leonie Henderson, by **14th AUGUST 2015** please.

Contributions from anonymous sources will not be printed. Whilst the editor welcomes contributions, photographs etc this is on the understanding that there is no obligation to publish, that the item may be edited and that there is no breach of copyright. Publication is in good faith and neither the editor nor the publisher accept any liability in respect of the content of any article, photo or advertisement, including any error or omission, responsibility for which remains with the author.

Copy can be delivered by hand, sent by post or e-mail (see inside back cover) or via the link on the websites [www.greatbromley.org.uk](http://www.greatbromley.org.uk) or [www.littlebromley.org.uk](http://www.littlebromley.org.uk)

For details of availability and costs for **ADVERTISING** in the 'The Bromley Messenger' please contact the Treasurer on 01206 230537

***Please support the sponsors of our magazine.***

Variety is the spice of life as the saying goes. Certainly our speaker / demonstrator / tutor, came with lots of Eastern Promise. Sue Mitchell of "The Eastern Delights Dance Group" from Colchester told us about her varied life, beginning some 15 years ago when she was teaching English in Algeria. Whilst there she met her husband and was introduced to this form of dancing; she loved every aspect of it and wanted to find out more.

On her return to England she found an adult learning class at The Wilson Marriage School, joined and has been dancing ever since.

In 2008 she had the opportunity to go to Egypt to see and learn about true Egyptian dance. She was also very fortunate to work with a professional teacher, have the chance to buy traditional costumes which she was able to have made and also altered immediately as required. She now makes her own because of the expense to purchase: they can cost upwards of £200.

Its origins go back to the fertility goddess and good luck. When a dancer is invited to

perform at a wedding in Egypt, the bride and groom watch before being led to the dancer and their hands are placed on the dancer's tummy for this very reason.

Sue explained about the various moves and movements, and her first dance encompassed all of

these. She went on to demonstrate a veil dance to the same piece of music, followed by a stick dance (reminiscent of Morris Dancing). She showed us both the male and female steps and one of our members, also by the name of Sue, was brave enough to take the floor and be shown how to do some of the steps.

Certainly if you want to keep fit with a difference this could be for you.

*Joy Rolfe*



## FRIENDSHIP CLUB

Beryl welcomed Members and our speaker for the afternoon, Mr Ken Guypon, to the June meeting,

The Christmas meal has been arranged for November 25th, and during the meeting a list was circulated for Members to sign if they hoped to attend. Further details will be available at the next meeting.

After the various notices Mr Guypon gave a thoroughly entertaining talk on Norfolk Humour including stories of local people and well known buildings.

The Flower Festival at the Church in July

was well supported by club members and a list of Sponsors was displayed in the Church. Once again the flowers were beautiful showing such skill and imagination. The Songs of Praise Service held on Sunday completed the weekend, with hymns chosen by village organisations.

The August meeting will be an Auction but there will not be a competition. There will, however, be a raffle. Donations for the Auction will be gratefully received.

*Sylvia Ward*

## Ardleigh Surgery

### Practice Manager retiring

This will be my last article to the magazine as I am retiring from the Ardleigh Surgery at the end of August after 47 years working in the NHS and 18 years at the practice.

There have been significant changes in the Ardleigh practice since I first joined it in January 1997. The numbers of patients registered with the practice has increased by a third from 4600 to 7000. The numbers of doctors from three (Drs Manders, Owens and Bettle) to five. Dr Manders retired and was replaced by Dr Cole and two other GPs joined the team, Dr Gladwin and Dr Lenart. The nursing team expanded from one part-time nurse to a full time Nurse Practitioner, a Practice Nurse, an Assistant Practitioner and a Phlebotomist. Ensuring reasonable timely access to appointments continues to be a challenge with an increasing workload for the practice.

During that time, the surgery also became a GP training practice with now two trainees allocated to the GP Trainers, Dr Owens and Dr Cole. I oversaw the building of an extension to the Ardleigh Surgery premises in 2007 and then in 2009 the practice moved into the Dedham Vale Health Centre premises to utilise it as a branch surgery as we were still short of consulting room space.

Services provided from either surgery premises have also expanded; Podiatry, Community Audiology, attached Midwife, a Health in Mind therapist, Counsellor, GP Care Adviser and Aortic Aneurysm Screening.

There have many changes in the organisation of the NHS during this period with different governments, District Health Authorities and Primary Care Trusts coming and going and these changes always have a significant impact on the organisation of general practice. We now have a Clinical

Commissioning Group and NHS England responsible for local health services. I have been involved as an elected member in clinical commissioning for the past nine years.

The practice has appointed an experienced Practice Manager, Stephanie Durrant, from another local general practice who will be starting in August so there should be a smooth transition.

I will certainly miss the GPs, staff and patients having been part of the practice for such a long time and trust I have played my part in maintaining the reputation of the practice as a caring and efficient organisation.

### Practice Nurse developments

Practice Nurse Tanya Holben has completed an Independent Nurse Prescribers course at Essex University and Jan Burgess, our Assistant Practitioner, is near completing an intensive course on diabetes.

### Dedham Branch Surgery

The leasehold ownership of the Dedham branch surgery transferred from the Dedham Vale Community Health Association to the Ardleigh practice at the beginning of May. The Association itself is winding up as it has achieved its objective in securing a general practice presence in the village after the old branch surgery provided by the East Bergholt practice closed down in 2003.

The Ardleigh practice has always served Dedham and had approximately 60% of the residents registered; this has increased over time to 95%. Another 20+ Dedham residents joined the practice recently since the East Bergholt practice was put into special measures by the Care Quality Commission.

### Staff changes

Unfortunately, Ben Wright, our surgery based Counsellor, left the practice in July

following the CCG transferring the funding of surgery based Counsellors to Health in Mind as part of rationalisation of services. All patients requiring counselling will now be triaged by Health in Mind to be seen by Colchester Mind probably at their Mersea Road premises. Patients requiring alternative mental health therapies, for example, Cognitive Behavioural Therapy will continue to be seen by Health in Mind therapists.

We are also sorry to report Karen Eastwood, our attached GP Care Adviser, left the practice in July following her husband's change of workplace and move to Surrey. Our new Care Adviser is John Moore who has been recruited by the general practice provider company from Colchester Borough Council welfare benefits unit.

*Fred Merrin, Practice Manager*

## Great Bentley Surgery



I hope you are all enjoying your summer? I'm enjoying the delights the UK has

to give this summer by spending a week in Norfolk with my family and a long weekend in Wales with friends climbing Snowdon for charity. I'm hoping the weather is good - Fingers crossed!

You may be surprised to learn that on average we have 150 appointments wasted where patients do not turn up every month. Obviously some of these are due to genuinely unavoidable reasons, but most are not. This increases during the nice weather (for some reason) so I would like to issue a plea to all patients to let us know if you are unable to make an appointment. We make it as easy as possible by providing a dedicated telephone line 01206 255071 where messages can be left 24/7. Even easier than that, you just reply "cancel" to your text reminder which is sent the day before. These appointments are desperately needed by many other patients who are often very ill, so it's really not fair on them. Thanks.

I've been asked by the Green Pharmacy (who are no longer connected to the surgery) to ask patients to let them know before you turn up to collect your regular medication, even if it's been sent electronically. They need time to get your

medication ready, so you will find you won't be waiting as long when you arrive if you can do this.

### **IMPORTANT MESSAGE ABOUT THE PATIENT PARTICIPATION GROUP**

Due to the holidays, there will NOT be a meeting of the PPG in August.

The next meeting will be on Thursday 17th September.

*Richard Miller, Practice Manager*

### **Portion control – Helping to maintain a healthy weight**

In England 65% of men and 58% of women are overweight. This is because we eat too much and don't do enough physical activity. The portions of food we eat have, over the last few years, got bigger and even the sizes of dinner plates are now larger making us eat more! Most of us eat too much without even realising it, but keeping an eye on portion control is something we can all do very easily:

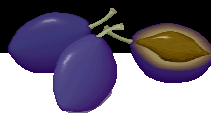
- 1.Reduce the size of your plate / bowl that you use. Use a plate about 8-10 inches across.
- 2.Divide your plate in half - fill one side with fruit/salad/veg; divide the other half again for protein and starch.
- 3.Eat 3 balanced meals a day and don't skip meals.
- 4.Measure and weigh your food - learn how much a portion is. You may be really surprised at how much you are overestimating e.g. a portion of rice is a small cup or 75g
- 5.Have a glass of water before you eat. We are often thirsty and eat instead.

6. Don't have second helpings - freeze the leftovers for another day.
7. Share when you eat out - share French fries between you at the table - if you have a portion each you will eat them all but if you share you probably will not want anymore. Order a dessert and 4 spoons. A few mouthfuls is usually just enough to satisfy our taste!

8. Try to keep away from processed food which is high in sugar and salt.

**Remember carrying excess weight puts us all at a greater risk of a whole range of serious health problems long term. Why not try some of the above?**

## KITCHEN CORNER



### Plum and Cinnamon Oat slices

- 1lb fresh plums
- 1tsp ground cinnamon
- 10oz plain wholemeal flour
- 5oz porridge oats
- 1tsp salt
- 8oz butter
- 4oz light brown soft sugar

Method: Stone and slice the plums. Put in a bowl and toss with the cinnamon. Mix flour, oats and salt in a bowl. Melt sugar and butter in a saucepan stir till melted over low heat. Add to the dry ingredients and mix to a dough. Press half into a greased non-

stick baking tin 10 x 6 inches.

Scatter the plums evenly over the surface and top with rest of dough pressing down firmly. Bake 200°C 25-30 minutes till crispy on top. Cool 10 minutes before cutting into squares.

Cool in tin before removing. If you are serving as a dessert you can use a 9 inch springform tin and cut into wedges while warm. This recipe works with other fruits such as no-soak apricots or raspberries etc.

*Jill Frostick*



**ST. GEORGE'S (C OF E) SCHOOL,  
GT. BROMLEY**

Head teacher: Julie O'Mara Telephone: 01206 230305



# Little Dragons Pre-School - Great Bromley & Frating

Church Meadow Bungalow, Hall Road, Great Bromley CO7 7TR  
Ofsted Inspected

Website: [www.littledragonspreschool.org](http://www.littledragonspreschool.org)  
Email: [littledragonspreschool@gmail.com](mailto:littledragonspreschool@gmail.com)



OFSTED INSPECTED **OUTSTANDING**

## **BREAKFAST AND AFTER SCHOOL CLUBS- PLACES AVAILABLE**

Tel: 07857 503103

Both the breakfast and after school clubs are doing well and growing in numbers- there are still places available, if you require further information please call the number above or pop in to see us.

From September 2015 we will also be running a breakfast club at Tendring Primary school – so tell your friends.

## **SUMMER HOLIDAY CARE**

Tuesday 28<sup>th</sup> and Wednesday 29<sup>th</sup> July  
Tuesday 4<sup>th</sup> and Wednesday 5<sup>th</sup> August  
8.30am – 4.00pm available

We still have some spaces available for our Holiday Club. Please contact us or visit our website for further details.

For the recent Flower Festival the children had decorated a 'Peppa Pig' for the display and also had a go at fresh flower arranging. On Monday 29<sup>th</sup> June we were invited by the parish to visit the church to look at all the displays for the 'Brolly Folly Flower Festival'. It was very well attended and the children sang some songs that they had been practising for their parents and families. It was a lovely day, thank you for inviting us.

Our vegetable garden is doing well, despite the odd casualties caused by the ever persistent rabbits. Unfortunately our carrots have been eaten but our courgettes are almost ready for harvesting and the sweetcorn is looking healthy too.

## **Fundraising**

We really couldn't do it without you! We would again like to thank all our parents, friends and staff for their continued support, time, generosity and hard work.

The proceeds of our fundraising are going towards purchasing some new equipment from our wish list: including some children's wooden chairs, a sand and water tray stand

and a two-seater trike, to name a few.

## **A very big thank you to everyone who supported our 'Fun Day' on 20<sup>th</sup> June.**

It was a great success and we raised approximately £850. It was a lovely day (until the end when the heavens opened). Lots of families came and enjoyed all the attractions and were also treated to a small performance of songs from the children.

## **PLEASE SAVE YOUR BISCUIT WRAPPERS AND BOTTLE TRIGGER HEADS**

We have registered with Terracycle and are currently collecting biscuit wrappers and plastic bottle trigger heads and caps from washing up bottles. These we send away and are then paid according to the weight. So please ask friends and family to help us collect as many as possible.

We take children from the age of two years and offer a 'home visit' to families of children prior to them starting Pre-school. This gives the child the opportunity to meet their key-person in their own home, aiding the transition stage to pre-school. It also enables us to collect and share information in a confidential environment.

For further information or to arrange a visit to the setting please contact us on the above number.

## **Party Table and Chair Hire Having a party for Pre-School children?**

*We can offer 4 perfectly sized tables & 20 chairs.*

*Deposit only £10 Tables only £5.00 each*

*Chairs Only £1.00 each*

*Collection Only - Contact us: Tel: 07857 503103 Email:*

*[littledragonspreschool@gmail.com](mailto:littledragonspreschool@gmail.com)*

## **Dates for Diary:**

Summer Break Preschool finishes Wed 22<sup>nd</sup> July

Tues/Wed 4<sup>th</sup>/5<sup>th</sup> August      Holiday Club



# LITTLE BROMLEY PARISH COUNCIL

[littlebromleypc@gmail.com](mailto:littlebromleypc@gmail.com)

At the recent parish council meeting, residents voiced their concerns regarding lorries over 7.5 tonnes using the village as a cut through. We are pursuing the idea of setting up a lorry watch, and residents are encouraged to note down number plates and company names and report these to the council. Either at the email address [littlebromleypc@gmail.com](mailto:littlebromleypc@gmail.com) or to Dawn Sauka, Clerk on 07977 498297.

The council is still in the process of trying to get our Vehicle Activated Sign with the help of Councillor Gugliemi. We hope to have positive news soon.

As part of traffic calming measures the council are looking into purchasing village entrance gates with a speed restriction sign on. We hope this will encourage drivers through our village to adhere to the 30mph speed limit.

The signs for the war memorial garden and

planters have now been made, and will be attached shortly.

We would like to report that two of our village road side boards have been stolen. If anybody has information regarding the theft, or knows their whereabouts, please get in touch with the council on the above contacts.

St Marys Church, Little Bromley has had their organ pipes stolen. If anyone has any information on the theft or sees them for sale anywhere please get in touch. There is 1 pipe left in the church for identification.

Dates for next Parish Council meetings to be held at the Haywain  
3<sup>rd</sup> September 2015  
29<sup>th</sup> October 2015  
17<sup>th</sup> December 2015

*D. Sauka, Clerk to Little Bromley Parish Council*

# GREAT BROMLEY PARISH COUNCIL

[www.gbpc.org.uk](http://www.gbpc.org.uk)

Councillors wish to thank Laura Austin for her hard work over the past few years as Clerk at Great Bromley following her resignation and I was welcomed as the new locum Clerk at the Parish Council meeting in June. The permanent position of Clerk has been advertised - if anyone would like further information please see the village website, [www.gbpc.org.uk](http://www.gbpc.org.uk). The strategic framework was discussed - Cllrs are keen to foster a strong sense of community and promote a good range of community based services and it is proposed that a series of road shows will take place.

Proposals for play equipment at Hare Green were considered with agreement to purchase items from the "Adrenalin Range" with installation taking place later in the year - It was noted that a new path around the perimeter, improved entrances and

improved drainage have already been put in place. Unfortunately it was reported that excrement had been smeared on the swings in the play area - if anyone has information about this, please notify me or the Police. Maintenance work in the church meadow has been started with some of the minor areas already cleaned - some hedges do need attention but this will need to wait until the birds nesting season has finished. All the village notice boards have been cleaned and it has been noted that the Bromley Cross board is in need of repair. Please note the next Parish Council meeting is on 12th August.

*Karen Tarling  
Locum Clerk to Great Bromley*

## DISTRICT COUNCILLOR NEWS

Tendring District Council had its latest meeting on Tuesday 7<sup>th</sup> July.

It was noted that Tendring UKIP are now called Coastal Independents Group.

Two petitions were presented to Council. One by Weeley Parish Council regarding the number of houses proposed by the Local Plan Committee and the second one regarding the possible closure of Clacton Police Station. It was moved and agreed that both petitions be sent to committee to discuss fully.

The Local Plan Committee met on 14<sup>th</sup> July and consists of 14 councillors from the various groups that make up the council. The meeting decided the Local Plan can now go out for public consultation. There

will be a series of consultation events across the district.

*My recent civic duties as Chairman of TDC:*

Attending Armed Forces Day and raising the flag, the opening night of the Harwich Festival, Harwich Children's Festival, closing night concert at St Nicholas Church Harwich - what a wonderful concert. Judging mini beach huts at a Frinton School, Clacton Sea and Beach Festival. Colne School play, Tendring Show, RCCE AGM at Writtle, a Graduation Ceremony at Essex University and a Mayflower 400 meeting in Gainsborough.

*Fred Nicholls, District Councillor*

## GREAT BROMLEY ONLINE COMMUNITY

There have been some new Facebook pages appear for Great Bromley last month.

The first is a public page to publicise events and happenings in the village. This is called **Great Bromley Village**.

The second is a closed (private) group for inhabitants (and very close neighbours with good connections to us) - by invite only. This is called **Great Bromley Community**.

If you are on Facebook please "like" our village page – and feel free to contribute any village events and happenings that will interest us all. And please also feel free to ask to join the closed group. Administrators are Hugh Frostick & Kate Strowbridge. Although these happen to be run by two Parish Councillors they are not directly or

officially affiliated to the council. There is a village twitter account **@GreatBromleyPC** which is the Parish Council's voice, kindly kept updated by Neil Skinner.

Another Facebook group of interest is **Great Bromley Cricket Club** (closed group for supporters, ask to be added) and the page at **Great Bromley and District Cricket Club**. There is also a page for **Great Bromley Village Hall** – please get "liking"!

Sadly if you are not Facebook member you won't be able to access these facilities – but there is still the good old website [www.greatbromley.org.uk](http://www.greatbromley.org.uk) that we keep up to date with events.

*Hugh Frostick*

### Venture Centre Lawford

will be restarting their popular table top season with the Manningtree District Girl guiding who will be hosting the event on Sunday 13<sup>th</sup> September 2015 from 2 – 4.00pm. With over 30 tables and light refreshments available this event is suitable for all ages and is ideal to obtain good quality second hand items as well as supporting our local Girl Guide unit. The cost of the table is £6.00 and to book your table please contact Jo 07783051621

# SAVE THE BROMLEY CROSS PUBLIC MEETING, JULY 2015

Recent statistics suggest that around 30 pubs are closing a week in the UK, and most of them never re-open. Our own Cross Inn has been closed for a few months now and, as I hope most of you are aware, a few local people have got together to look at how we can help keep the Cross as a village pub and amenity.

That group, calling themselves "Save The Bromley Cross", organised a public meeting at Great Bromley Village Hall on Tuesday 15th July, to explain what's been going on and to share the results of a recent questionnaire about the pub. There was also an inspirational presentation by David Westley and Peter Cross who are part of the successful team from Bentley, that saved the Case is Altered and turned it into a flourishing village pub.

Over 70 people were at the meeting and heard first from Owen Blowers about what has happened to date. The Cross Inn received outline planning for two houses on their garden at the end of last year. In April the Parish Council successfully applied for an "Asset of Community Value" registration, and soon after the pub closed. The Cross is now for sale and the local community have six months to make an offer.

That led to the presentation by Jim Craddock on the results of a local survey gauging support for a community pub. Nearly 150 questionnaires were completed and show over two-thirds of the respondents thought having the Cross Inn as a pub and village amenity was important or very important. Results suggest that community ownership and even a shop would see regular usage increase from only 20% to nearly 50%. People also prioritised what they wanted - good beer, bar food and the post office featuring highly, so no surprises there.

Next David from the Case is Altered in Bentley described how his village

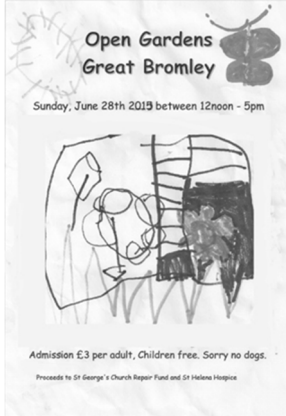
progressed from a similar situation, to re-opening the Case as a thriving, community-owned, village pub. They raised over £200,000 in shares, with a minimum investment of £250, and with incredible local support were able to initially open the pub run entirely by volunteers. A year on and the Case has staff who are now running the pub alongside a still enthusiastic team of volunteers, under the guidance of the shareholder elected management committee. Peter then answered the difficult financial questions, which appeared to persuade many of the audience that such a project was achievable.

The meeting closed with a show of hands to indicate support for the idea, which showed unanimous support. And a surprising number of hands stayed in the air when asked if they'd support the project financially under the right terms.

The "Save The Bromley Cross" steering group will continue to meet over the next few weeks hopefully with new members who have come forward from the questionnaire and meeting. The optimistic outcome from the meeting was very encouraging, and the group will explore adopting the same approach that proved so successful in Bentley. And many feel that whatever the outcome, the likelihood of the Cross re-opening has to be increased by such a great show of community support and this valuable market research. Anyone who wants to get involved or keep in touch should send an email to [SaveTheBromleyCross@yahoo.co.uk](mailto:SaveTheBromleyCross@yahoo.co.uk) or join <http://www.facebook.com/groups/SaveTheBromleyCross>

*Jim Craddock, Secretary, Save The Bromley Cross*

# IN THE GARDEN WITH KATE



Good grief- August already, where has this year gone!

Before I start, I need to thank everyone who opened their gardens to the public during the Church Flower festival, and also those who braved the rain to come

and see them. It was unbelievable that on the stroke of twelve, when the gardens opened, the heavens also opened and continued to rain until about 3pm! However despite that, there was a reasonable flow of visitors making extremely complimentary remarks about the gardens, and most of those who opened their gardens said how much they enjoyed showing people around. A recurring comment was that there was not enough time to see all the gardens, and it was suggested that should the Open Gardens be repeated, the open day would be at least a couple of hours longer. £160 was raised which is to be split between St Helena Hospice and the St George's church repair fund.

Overall it has been an exceptionally dry summer so far (just watch, as soon as this goes to print, the heavens will open again) and I seem to have spent an inordinate amount of time watering. I am fortunate to have a well so at least I do not feel guilty about using water. It has, however, meant an exceptional show of roses and other flowers that usually become quickly damaged by the rain. Due to this, when we had the Open Gardens, the piece de resistance of my garden was a white rambling rose that meanders through a eucalyptus tree. It was at its most glorious,

so visitors looked up, and not down at the weeds!

I meant to share a discovery last month, but forgot. When I was turning over the compost heap, I found two batches of hatched grass snake eggs, about 20 in all, which means I have a healthy little colony of grass snakes in amongst the weeds. It probably accounts for why I don't have many frogs anymore, though when the puppy started barking in the kitchen yesterday we found a tiny frog, the size of my fingernail, on the floor. It was swiftly repatriated to the undergrowth by the pond.

I have been harvesting the soft fruit this weekend, and have had a good crop of gooseberries, red and black currants. These all freeze really well, and are a touch of summer during the dark days of winter.

Jobs for the garden this month, apart from enjoying your plot, include harvesting beans, lettuce, beetroot, turnip, courgettes, second early potatoes and globe artichokes, and hopefully tomatoes, cucumbers, aubergines and peppers from the greenhouse. Continue sowing lettuce and oriental leaves. Dead head your flowers regularly, and, if I haven't completely put a hex on the weather, water and feed the plants! This is also the time of year to take cutting from herbs and soft wood cuttings from pelargoniums and fuchsias.

Above all, please find time to sit back and enjoy your garden!

*Kate Strowbridge*

# 2015 EVENTS

## AUGUST

- 5 WI outing to Place for Plants followed by lunch at the King's Head
- 8 Summer Serenade concert, St George's church, 7.30pm
- 9 Bromfest Folk Day, Lt Bromley church, 12 noon
- 12 Gt Bromley Parish Council meeting, Village Hall, 7.30pm
- 14 Cricket Club Chairman's Day & Official Opening of Club Extension
- 15 Bingo Night, The Haywain, 7.30pm
- 20 WI Pottery Day with Maggie Doherty - waiting list only  
Friendship Club meeting - Auction, Village Hall, 2.00pm

## SEPTEMBER

- 2 WI meeting, 'The German Occupation of Guernsey' Village Hall, 7.30pm
- 3 Lt Bromley Parish Council meeting, The Haywain, 7.30pm
- 11 Harvest Lunch, Village Hall, 1.00pm
- 17 Friendship Club meeting, Village Hall, 2.00pm
- 21 Poetry, music & meditation, Lt Bromley church
- 24 WEA History of Painting in East Anglia, Gt Bromley Village Hall, 2.30pm
- 25/26 Willow Weaving Courses, Village Hall

## OCTOBER

- 5 Amenities Group AGM
- 7 WI meeting, Village Hall, 7.30pm
- 10 Race Night, The Haywain, 7.30pm
- 11 Harvest service (10.30am St George's) followed by lunch, Village Hall, 1.00pm
- 15 Friendship Club meeting, Village Hall, 2.00pm
- 18 Harvest service, Lt Bromley church
- 22 Craft & Collectibles Event, Village Hall
- 29 Lt Bromley Parish Council meeting, The Haywain, 7.30pm

## NOVEMBER

### **Willow weaving day**

with Jo Hammond,

Great Bromley Village Hall

Saturday 26<sup>th</sup> September

10.00am-4.00pm

Make a flat flower basket

£50 including a sandwich lunch, tea/coffee  
and all materials

£10 deposit secures place

Phone Kate 07592735600

### **Harvest lunch**

11th October

in the Village Hall  
at 1.00pm

£13.50 for a two course lunch

### **BROMFEST IS BACK!**

The 3rd **Little Bromley Folk Day**

Sunday 9th August 12 noon - 5.00 pm

Little Bromley Church, CO11 2PP

Wonderful Local Musicians, Join in the  
Folk Dancing,

Top Notch Art Show, Children's Activities.

**FREE ENTRY**

Reasonably Priced Light Lunches, Tea and  
Cakes available

For information call Dorothy -

07791974053

**Coming up:**

21st September

Poetry, music and meditation for  
International Day of Peace



# SUMMER Serenade

An evening of classical music brought to you by some of the UK's finest young operatic talent. Arias, songs and ensembles from your favourite operas and musicals including, La Traviata, Carmen, West Side Story and Oklahoma!

**Saturday 8th August 2015, 7.30pm**

St George's Church, Great Bromley

Tickets £15  
(including a glass of wine and canapés)



Jennifer Witton  
Soprano



Bethan Langford  
Mezzo Soprano



Joshua Owen Mills  
Tenor



Thomas Humphries  
Baritone



Ben-San Lau  
Pianist

Tickets Available from:  
PRIMROSE PORK HALL RD, GT BROMLEY &  
DINAH JONES 01206 231059

Concert in aid of British Heart Foundation



## Ardleigh WEA (now meeting at Great Bromley Village Hall) A History of Painting in East Anglia

Tutor: Mark Beasley  
September Term

Commencing Thursday 24th September  
14.30 - 16.00

A ten week course Fee £48

Contacts: Jill Frostick 01206 250263  
(Secretary)

John Terry 01206 230490  
([john@terrrys.org.uk](mailto:john@terrrys.org.uk))

Do come along to the first week and see if it is the course for you. If you think it is payment must be made on the second week.

We usually have a tea break about half way through the session



On

**Saturday 15th August**

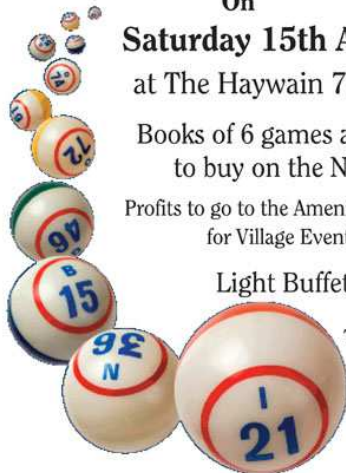
at The Haywain 7.30 start

Books of 6 games at £2.50  
to buy on the Night

Profits to go to the Amenities Group  
for Village Events

Light Buffet

Telephone  
The Haywain  
on 01206  
390004 to  
book a table



Come along and enjoy a social evening with

*Little Bromley Amenities Group*

## GT BROMLEY BARN DANCE

Saturday 21st November  
at Great Bromley Village Hall  
7.30 p.m. to 11.00 p.m

Caller: Sibby

Band: Musicmakers

Tickets £10

(will be available from John Terry  
(01206230490) [john@terrrys.org.uk](mailto:john@terrrys.org.uk) and  
Village Hall Committee Members)

There will be a Bar

Sibby the caller is well known in the South East of England as a caller for Barn and Folk Dances, he is very easy to follow and his dances are great fun, so do come along and enjoy. Everyone welcome, from youngsters to old age pensioners and having a partner is not essential. The fact that he has live music means he can get the speed of dance right for everyone and can stop them if for some reason the dance falls apart. All dances are called.

## MIDSUMMER TEA PARTY AT ST MARY'S CHURCH, LT BROMLEY

On Saturday 20<sup>th</sup> June at 3pm, the Friends of Little Bromley Church held our Midsummer Tea Party with Pimms.

Lyn and Neil of the 'Elan Duo' performed throughout the afternoon, and the songs and music were lovely.



As the church started filling up, everyone started to make their way to the refreshments. The Pimms were very popular and the cream teas were eaten quickly by the 50 people attending. It was a really nice afternoon and the church looked lovely with the flower arrangements all around.

Around £250 was raised for the Churches Conservation Trust. We would like to thank

all our helpers, especially the cooks for the tasty scones and thank all those who came.

On a sad note we also discovered that afternoon that someone had stolen the pipes from our lovely organ. They didn't have much value, but are going to be missed very badly.

On a happier note we are looking forward to our annual **Folk Day on Sunday 9<sup>th</sup> August**. Unfortunately there will not be a bat watch as planned in August. We hope to do one at another time.

*Carol Cordwell*

## The United Benefice of Ardleigh and the Bromleys' Children's Committee

### JAM Session

On Friday 5<sup>th</sup> June at 3pm, we held our first JAM (Jesus and Me) session at St. George's Church. This was a chance to drop into the church for refreshments and a chat.

We were pleased to welcome around half a dozen mums and about 10 children who joined us. As the adults talked, the children

did some crafts and colourings.

A nice time was had by all. We look forward to our next sessions over the coming Fridays.

*Carol Cordwell*



### GREAT BROMLEY POST OFFICE at The Cross Inn

Ardleigh Road, Great Bromley CO7 7TL

Telephone: 01206 231073

Mon/Tues: 9.30am-2.00pm      Wed/Thurs/Fri : 10.00am - 2.00pm

Sat : 9.00am-midday

- Please note that there is now a wide selection of cards and wrapping paper available.
- A dry cleaning service is also available.

**Please ask for details at the counter.**



# GT BROMLEY & DISTRICT CRICKET CLUB

## Official Opening of Club Extension and Chairman's Day

Following the completion of the building and improvement works at the Club we are pleased to confirm the official opening will be held on Chairman's Day, being Friday 14 August 2015.

Chairman's Day sees the return of, the Chelmsford based, Springfield Cricket Club taking on a Great Bromley Chairman's XI. The match starts at 11am with Lunch and the official opening scheduled to start at 1:00pm. This year the lunch will be attended by invited Vice Presidents and members of the local Council, who kindly supported the funding of the Club Extension. All will be welcome to attend the official opening at 1:45pm and enjoy a great day of cricket, if past years matches are anything to go by.

Play will recommence following Lunch at 2pm with Tea scheduled for around 4:30pm. The evening celebrations of the opening of the club will commence at 7pm

with BBQ and music in to the evening with all welcome to attend. This should be the Grand Finale to Cricket Week at the club.



Cricket week includes the following fixtures:  
Wednesday 12 August 2015  
Start 6pm – T20 Invitational  
Thursday 13 August 2015  
Start 2pm – The Phil Allam Memorial Cup

We hope to see you at the Grand opening.

We also have a Facebook Page where you can keep up to date just like the Community page **Great Bromley and District Cricket Club**

**Cricket Club**  
**100 Club Winners**  
for June

1st. Mrs. Barbara Hart  
2nd. Mr. Pip Allam  
3rd. Mrs. Olga Lawson

*Lynda Allam*

# STOUR VALLEY MEN'S PROBUS CLUB



## Recent Meetings

Dave Austin presented "Colchester's History", Essex Air Ambulance informed us of the great work they undertake at time of need, David Ablewhite spoke on Dorothy L Sayers and Francis Boardman on "The Crimean War", Phil Hadwen on "Seaplanes at Felixstowe" and Andy Schooler on "A nice cup of tea & a sit-down". Our popular Summer Lunch took place at the Venture Centre on Sunday 26 July. All members have much enjoyed all these events.

## Future Meetings

There are no meetings in August and we return again on Wednesday 2 September with our Autumn programme when John Floyd will speak on "Electric Tramways of East Anglia".

## New Venue – St John

### Ambulance HQ Manningtree

Please note, we now meet at the St John Ambulance HQ, Manningtree.

## New members

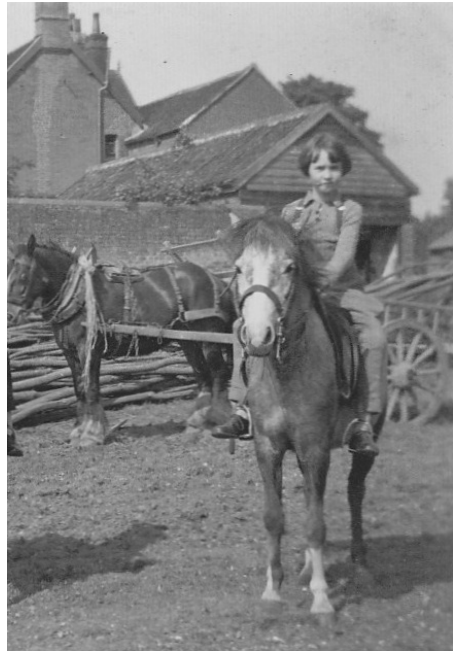
Our Club endeavours to be simple in structure, be free of the constraints and obligations of service clubs, and involve members to a minimal cost. The club is directed primarily to providing fellowship between members who are compatible with each other, and provide the opportunity for development of acquaintances. New members are welcomed by Stour Valley Men's Probus Club, we meet on the first and third Wednesday of each month in Manningtree at 10.30am. Please contact Secretary Brian Rolfe on 01206 393665 for further details.



# DICK HAYWARD'S FARM RECORDS

I was lucky enough to enjoy several chats with the late Dick Hayward over the last few years, and I shall miss him. He let me see his old farm records before sending them off to the Records Office. Being one

A	S	F
PECK	George ISAAC	404 Horner
CHAPLIN	William Alan William	541 Horner
AUSTIN	George E. W.	741 Horner
RIX	Bertie Howard Sidney	41 Horner
PECK	ISAAC	Horner
MANN	George Henry	Horner
WENDEN	Charles Clifford	Stockman
CHAPLIN	William George	Stockman
HURST	Arthur Sam	Shepherd
FAYERS	Richard Walter	Farmer
HUMM	Hubert George	1940
HUMM	George William	Farmer
RIX	William Charles	do
SPARROW	George	do
SPARROW	William J.	do
AUSTIN	Ernest E.	Compton
CHAPLIN	Frank A. G.	Shepherd
FAYERS	Bertie	Child
WATLING	Samuel H.	Child
FAYERS	Louis	Child
STANNARD	E.	
SHARP	W. J.	



rayed and put in plaster.”

15 years later it was the same Ernest Austin who came a cropper (no pun intended!) “Whilst clearing weed from the rear end of the Grimme Commander potato harvester he caught his left thumb between drive roller and conveyor drum and severed tip. A. Studd was standing on opposite side of the harvester and immediately fetched car, took Mr Austin first to farm house and then on to hospital.”

© Hugh G Frostick 2015

of the larger farms, the lists of employee names in the pay books give a good cross-section of local names, and this particular page also gives a reflection of several of the family names on the war memorials:

The accident register makes quite interesting reading. In 1964 “Stanley Roy Richardson assisted by G Abbott and A Studd was moving the Dexta tractor by hand, steering from the ground and the rear wheel ran onto his left heel. It hurt and caused him to limp but he carried on with his work until breakfast (8:20am). During breakfast his foot became swollen and more painful, and E.A. Austin brought him back to the house at 9am. R.K. Hayward took him immediately to Dr I. Guiver at Ardleigh who signed him off work, and sent him with a note to hospital. His foot was x-

# THE BROMLEYS SCARECROW FESTIVAL 2015

It started in June, entry forms were placed around the villages and the first scarecrow was put in Church Meadow for everyone to see.

As deadlines passed we had 11 entries to find on our Scarecrow trail. Putting an umbrella with a scarecrow wasn't easy but we had some very clever entries.

Councillor Carlo Guiglielmi very kindly judged the scarecrows and selected the winners. He also came to St. George's Church, Great Bromley during the Flower Festival to present the winners with their prizes. So on Sunday 28<sup>th</sup> June at 3.30pm, Carlo presented **Eve Barnham with the first prize** for her snowboarding scarecrow.

Second prize went to Linda Pinhey for her cocktail waitress and third prize went to Lillian and James Frostick for their umbrella man at work. They were given their prizes separately.

We would like to thank all those who entered as they have been a joy to see around the villages. Everyone who entered received a certificate with a photo of their scarecrow. Photos of all the scarecrows are in Great Bromley Church and St. Mary's Church, Little Bromley.

*Carol Cordwell*









St Helena Hospice  
your time... your hospice  
Registered Charity Number: 281919

# ST HELENA HOSPICE

## Family days out in aid of St Helena Hospice

St Helena Hospice is looking for local families to stretch their legs and take on one of its fantastic fundraising events this year.

As part of its 30th anniversary the hospice has planned some very exciting events for families, individuals and groups of friends or colleagues to sign up to. Taking part in its events as a family is a great way to spend quality time together, get some fresh air and exercise while raising money for a good cause. The hospice has a range of running, walking and cycling events to cater for all age groups and interests.

**Bubble Rush** – On Saturday 5th September in Colchester. Run or walk 5km and get blasted with colourful bubble canons along the way. Under 5's take part for free.

**Cycle Ride** – On Sunday 27th September starting at Monks Farm in Dedham. Choose one of three different length routes from 5, 24, and 56 miles taking participants

through Constable countryside and villages.

**Take on the trail** – On Sunday 4th October starting at Langham Community Centre. Walk, jog or run a choice of 5 or 10 miles and decipher special codes to work out the route. Runners taking on 10 miles will be timed.

**Reindeer Dash** – On Sunday 13th December. Take a festive dash around Colchester Castle Park donning reindeer noses and antlers.

The support that is received from event participants enables the hospice to continue providing patients with life-limiting illnesses and their families with invaluable care and support. Sign up to take part in memory of a loved one or just to support your local hospice and have a day to remember with the whole family.

Those who wish to participate in or find out more about the hospice's events can do at [www.sthelenahospice.org.uk/events](http://www.sthelenahospice.org.uk/events) or call the events team on 01206 931468.



## RIDE AND STRIDE 2015

The 2015 Ride+Stride comes round on Saturday September 12. This year the event aims to raise more than £1.5 million to help save historic churches and chapels.

Thank you very much for all you have been doing to raise the funds needed for urgent church repairs and the installation of modern facilities in churches. Last year's R+S fund raiser saw some amazing achievements in Essex and East London, including a bell ringers' Ride & Ring, a 120 mile walk over 14 days and a Choral Steeplechase!

Thousands of people will be taking part in this year's sponsored bike ride or walk,

seeing beautiful countryside, getting some exercise and having fun with family and friends.

You can find many cycle routes and walks recommended by public bodies online: [www.visitessex.com/what-to-do/cycle-essex.aspx](http://www.visitessex.com/what-to-do/cycle-essex.aspx)

[www.essexhighways.org/Transport-and-Roads/Getting-Around/Cycling/Routes-and-maps.aspx](http://www.essexhighways.org/Transport-and-Roads/Getting-Around/Cycling/Routes-and-maps.aspx)

[www.visitessex.com/what-to-do/walk-essex.aspx](http://www.visitessex.com/what-to-do/walk-essex.aspx).

Do 'follow' us on Twitter and tweet @ChurchesEssex. Find us and 'like' us on Facebook, and post to our timeline.

# GREAT BROMLEY FLOWER FESTIVAL

For anyone who thinks differently a flower Festival doesn't just begin on the day announced. Prior to the start many groups and individuals around the villages are planning their flower arrangements. When someone mentioned umbrellas, you have to plan how to include it in your arrangement.

St. George's school and Mrs O'Mara very kindly produced our lovely posters which were on display everywhere. Susan Scott took care of our publicity.

The few days leading up to the festival, the church becomes a hive of activity. Watering cans, oasis, loads of flowers are strewn around the church while lots of ladies organise their displays. We were very lucky to have a lot of kind people who sponsored the cost of the flowers for our event. A list of our sponsors will be up in the church until mid - August.

Refreshment tables are set up, raffle, cakes, bric a brac, and lots more components are busily set out ready for the start.

And finally it arrives. Friday the 26<sup>th</sup> June at 10am, D-Day!! Stewards man the church entrance, no charge just donations. They have to give everyone programmes, offer quizzes, and answer any questions. Once inside you can see all the lovely displays, carefully thought out and beautifully executed. Umbrellas shown in ways never considered abound around the church. Visitors all decide on favourite displays and discuss what they see. As people leave they chat about the smells of the flowers in the church and how lovely they looked and as one person said, 'Not a Mary Poppins to be seen'.

Tasty cakes and drinks, ploughman's lunches disappear quickly. Guess the name of the Dog gets everyone guessing. Pottery for sale and an art exhibition tempt the wallet, Lucky dip and activities for the children.

On Friday morning, we were entertained by some of the children of St, George's school, Great Bromley. Led by Mel Bridle, their music teacher, we all enjoyed our musical renditions. Throughout the weekend we had music played on the organ by Gregory or Stephen, so nice to hear. On Monday morning the Little Dragons children sang for us and were joined by Bishop Roger of Colchester.

On Saturday Fairtrade and the W.I. set up stalls with lots of lovely things for us to buy.

The time passed quickly over the weekend, especially if you strayed off to see the scarecrows on the scarecrow trail or the Open gardens, during the rain on the Sunday afternoon.

David Wenden took several people up to the top of the tower to see the views.

Sunday afternoon saw local councillor, Carlo Guiglielmi present first prize in the scarecrow competition to Eve Barnham for her lovely entry.

The quiz was won by Rowan Pannell who won a £5 gift voucher.

This was followed by the draw for the raffle. First prize was £100 which was won by Mr Ian MacPhearson. It is very important that we thank all of our wonderful sponsors for the raffle prizes and even the raffle tickets, as without them, there would be no raffle. A list of all those who supported us will be up in the church until mid - August.

At 6pm on Sunday, we welcomed over 80 people for the Songs of Praise.

On Monday we had a group from Harwich visit in the afternoon and we drew the winner for Guess the name of the Dog, Mrs Estelle Kemp who chose the name Fido. She won Fido.

There are so many people to thank who helped with the Flower Festival. Such an event cannot function without lots of people

to organise, serve, do flowers, make cakes, do the finances and be there. It also needs the visitors who make everything worthwhile. There are too many people to mention by name but we must say a special thank you to Jenny Nicholls who was the driving force behind the whole event.

The Flower Festival has raised over £3000

towards the church and we feel it was a great success.

*Carol Cordwell and Susan Scott.*

## LITTLE BROMLEY AMENITIES GROUP

### Flower Festival

Little Bromley had two representations in the Great Bromley Flower Festival - The Friends of Little Bromley and the Amenities Group. Thank you to Carol who did the flower arrangements; they looked magnificent. The Amenities Group was formed in 2012 with the idea of giving Little Bromley a Community Group that everyone can be involved in. We meet as a group four times a year at The Haywain and welcome ideas for events and projects.

We have raised money for Cancer charities, Alzheimers, Spinal Injury,

Wildlives, British Heart Foundation as well as our own Amenities Fund which has helped fund the refurbishment of our Village War Memorial.

We are offering associate membership of the Amenities Group to residents in Great Bromley - it is totally free - so sign up and meet new friends and we will notify you of our events.

Email [amenitiesgroup@gmail.com](mailto:amenitiesgroup@gmail.com) if you are interested in joining.



## CHURCH JOTTINGS

I can't begin to tell you how much I enjoyed St. George's Flower Festival weekend in June. It is very difficult to choose a very favourite moment – everything was just fantastic. A big thank you to the whole community for an absolutely brilliant time. There was a buzz in our church all weekend, and you, our village and community, all supported us too. For the first time we were open for four days enabling the Little Dragons and the Monday Club from Harwich to join in, which was great! This year we did not charge for entry or programme – only asking for a donation if you had enjoyed the visit and I have to say your generosity was exceptional.

Thoughts now turn to events to come later in the year. We once again will be supporting "Ride and Stride". If you wish to take part and support friends of Essex Churches sponsor forms are available in the church and we shall be open with refreshments and cakes throughout the

day for visitors both to Little Bromley and Great Bromley.

Harvest celebrations this year are already in the diary. At St. George's Great Bromley, celebrations begin with a service at 10.30 on 11<sup>th</sup> October followed by a lunch at the Village Hall. This year we have booked Linda Pinhey to provide a two course lunch for us at a very reasonable cost of £13.50. Bookings can be taken now - everyone in the community is welcome to join us.

At St. Mary's Little Bromley we are celebrating harvest on Sunday 18<sup>th</sup> October. (Time to be arranged)

Church lunches will resume on 2<sup>nd</sup> September, please join us, this is an event for the community, come and join us at midday, for a simple lunch, lots of chatting, laughter and friendship. Usually between fifteen and twenty people join us – so give us a look we would love to see you.

*Jenny Nicholls, Churchwarden*

## MESSY CHURCH

### **Umbrella of Love at Messy Church**

On Friday 29<sup>th</sup> May at 10am we held our 'Umbrella of love' Messy Church session. Craft tables were set out and toys at the ready. At 10.15am children and parents sat together to join in with the story of Noah. Loud animal noises could be heard all around the hall.

The children went off to make an assortment of animals, rainbow handprints and laced rainbows. Tissue flowers became the hot spot, with lots being made to take home and for our display at the Flower Festival. Everyone got the chance to take home the story of Noah.

Following an animal song and prayer time,

everyone gathered to play a ball game.

Hot dogs and fish fingers were popular as everyone shared the meal before the morning ended.

Although the attendance was not as high as normal, everyone seemed to enjoy the session.

We would like to thank all those who came and all those who helped over the morning. Our next Messy Church will be on Friday 24<sup>th</sup> July at 10am at Ardleigh Village Hall.

*Carol Cordwell*







## ARDLEIGH and THE BROMLEYS CHURCH OF ENGLAND

### Church of England Services - AUGUST

<b>Sunday 2nd</b>		<b>9th Sunday after Trinity</b>	
8.00am	Eucharist		<i>St. George the Martyr</i>
10.30am	Parish Eucharist with Holy Baptism		<i>St. Mary the Virgin</i>
6.30pm	Evensong		<i>St. George the Martyr</i>
<b>Sunday 9th</b>		<b>10th Sunday after Trinity</b>	
8.00am	Eucharist		<i>St. Mary the Virgin</i>
10.30am	Parish Eucharist		<i>St. George the Martyr</i>
<b>Sunday 16th</b>		<b>11th Sunday after Trinity</b>	<b>The Blessed Virgin Mary</b>
8.00am	Eucharist		<i>St. George the Martyr</i>
10.30am	Parish Eucharist <i>St Mary's Patronal Festival</i>		<i>St. Mary the Virgin</i>
<b>Sunday 23rd</b>		<b>12th Sunday after Trinity</b>	
8.00am	Eucharist		<i>St. Mary the Virgin</i>
10.30am	Parish Eucharist		<i>St. George the Martyr</i>
<b>Sunday 30th</b>		<b>13th Sunday after Trinity</b>	
8.00am	Eucharist		<i>St. Mary the Virgin</i>
10.30am	Parish Eucharist		<i>St. George the Martyr</i>

### Holy Communion

every Friday at **11.30am** at Seven Rivers, Hall Road, Great Bromley.

#### Dates:

Evensong : September 6<sup>th</sup> (Meet Bishop Roger)

Ride and Stride : September 12<sup>th</sup>

Harvest lunch : October 11<sup>th</sup>  
£13.50 – two course lunch  
Village Hall 1pm

#### J.A.M. DROP- IN

Every Friday in St George's church  
Term time only

Parents & children welcome  
All are welcome  
3pm to 3.45pm  
Refreshments, activities

#### Church Lunch

2nd September 12noon  
Please join us – no charge – no booking  
required